



WANDSWORTH ROAD, SW8

£1,300,000

Victorian townhouse
Stylish master en suite
Impressive south facing garden
Generous living space
Potential to extend (stpp)
Energy rating: D

ABOUT THE PROPERTY

A spacious three-bedroom Victorian townhouse with a stylish master en suite, versatile living, and a large south-facing garden in a sought-after location.

This charming period home blends character with modern living. A generous double reception room features high ceilings, ornate cornicing, and a working fireplace. To the rear, a well-proportioned kitchen/breakfast room opens onto a superb south-facing garden over 100 ft, ideal for entertaining and family life. The ground floor also includes a guest WC and potential to extend (STPP). Upstairs offers a principal bedroom with en suite, plus two further double bedrooms, one also with en suite.

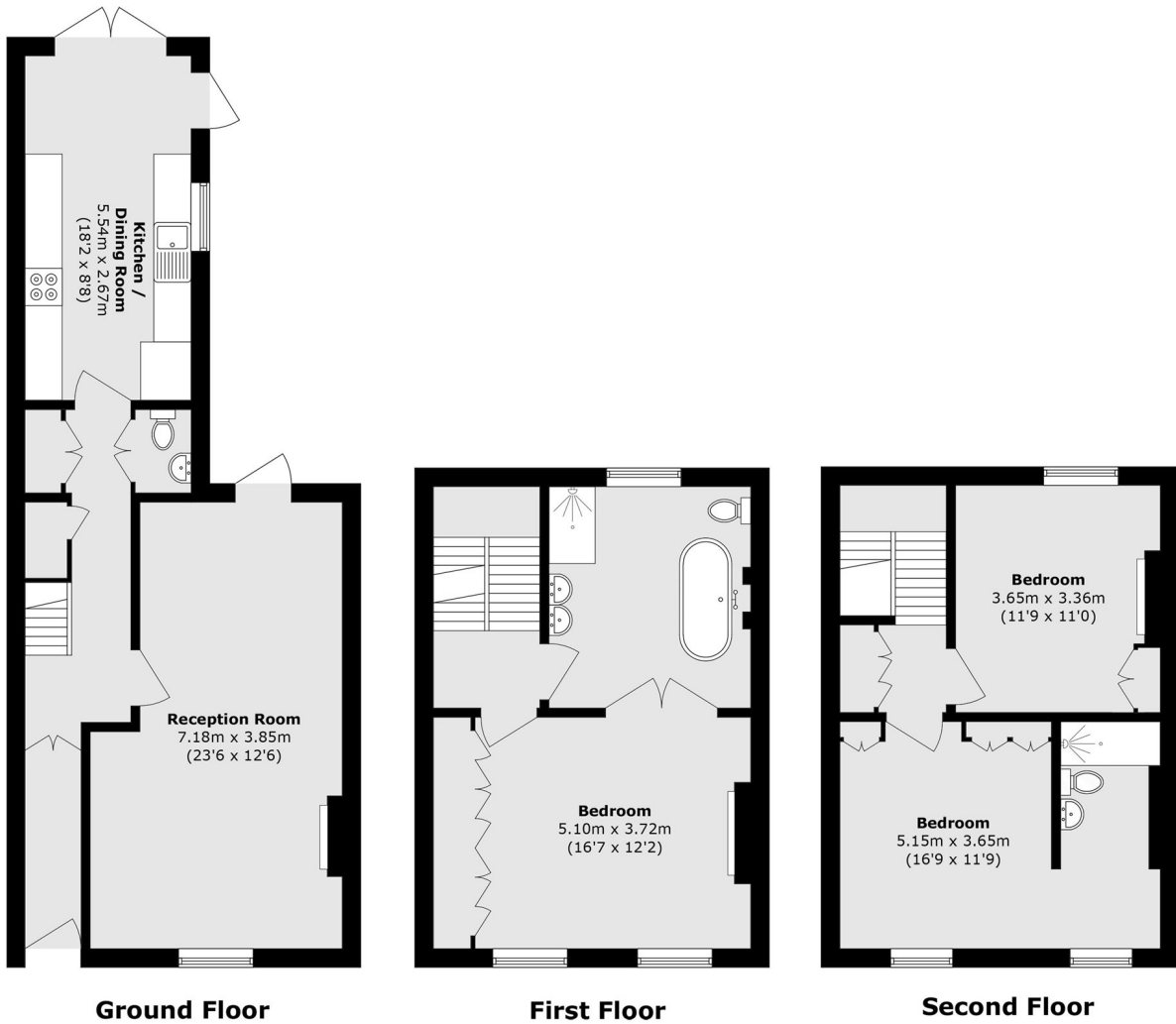








STEP INSIDE WANDSWORTH ROAD



Total area (approx.): 132.1 sq. m (1421.9 sq. ft)

Clapham
020 7501 3666

Energy Rating: D We aim to make our particulars both accurate and reliable. However, they are not guaranteed; nor do they form part of an offer or contract. If you require clarification on any points then please contact us, especially if you're traveling some distance to view. Please note that appliances and heating systems have not been tested and therefore no warranties can be given as to their good working order

MARSH &
PARSONS