


**ROBERTSON PHILLIPS**  
Estate Agents, Valuers,  
Lettings and Property Management

40 Station Road, North Harrow,  
Middlesex, HA2 7SE  
Tel: 0208 863 1122

Email: harrow@robertsonphillips.co.uk

Harrow Lettings: 0208 092 4045  
Hatch End/Pinner Sales: 0208 428 7161

  
**ROBERTSON  
PHILLIPS**  
Est. 1991

## ***ABERCORN CRESCENT, SOUTH HARROW***



***Four Bedroom End of Terraced House***

***£585,000***



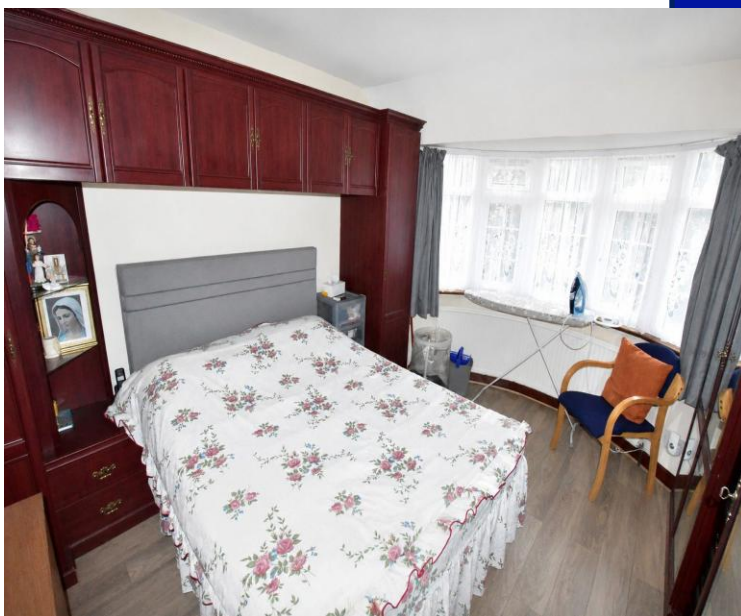
[www.robertsonphillips.co.uk](http://www.robertsonphillips.co.uk)



## *Description*

A deceptively spacious and thoughtfully extended 3/4 bedroom end-of-terrace family home, situated in a premier South Harrow residential pocket. Boasting highly flexible living accommodation, a sizeable rear extension, and the rare benefit of both front off-street parking and a rear garage, this property represents an ideal opportunity for growing families and commuters alike.



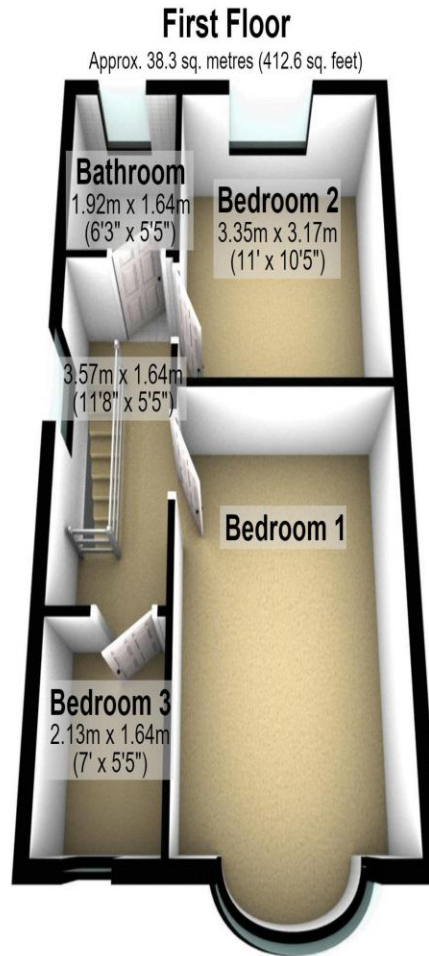
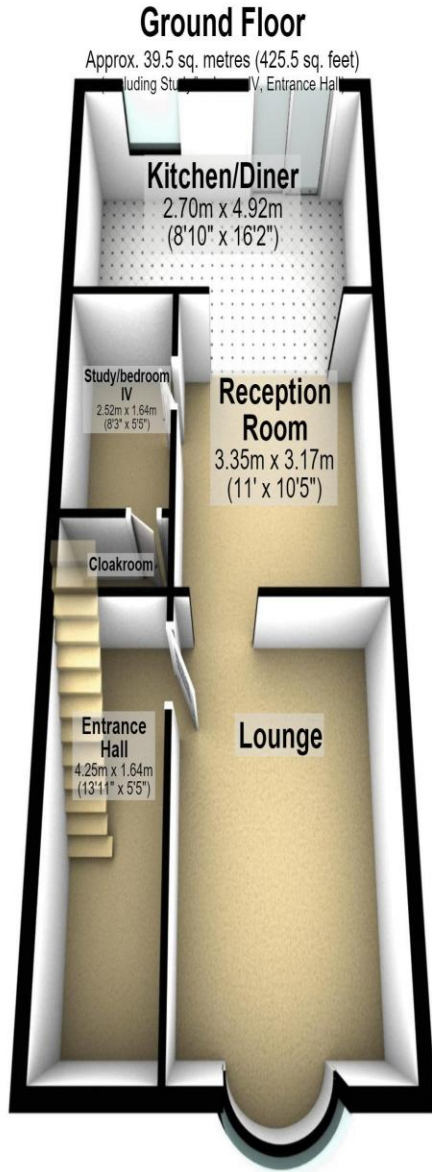


- *Extended 3/4 Bedroom End-of-Terrace House*
- *Two Distinct Reception Rooms (Lounge & Dining Room)*
- *Gas Central Heating & Double Glazing Throughout*
- *Approximately 60ft Private Rear Garden*
- *Off-Street Front Parking & Rear Garage*
- *Versatile Downstairs 4th Bedroom or Home Office*



**Additional Information**

TENURE. FREEHOLD  
LOCAL AUTHORITY. HARROW  
ENERGY EFFICIENCY RATING. T/B/A



Total area: approx. 77.9 sq. metres (838.1 sq. feet)



We have not sought to verify the legal title of the property, the existence of planning permissions and/or building regulation approvals and have been unable to check the working condition of any services or appliances.

**Property layouts are for general guidance and are not drawn exactly to scale. Measurements are taken at the widest points and bays, alcoves, wardrobes etc. may not be shown.**