



## Sidley Road, Redoubt, Eastbourne

£1,300 PCM

### Key Features

- ◆ Two-bedroom, two-bathroom, mid-terraced house
- ◆ Popular Redoubt area of Eastbourne
- ◆ Close to local shops and amenities
- ◆ Walking distance from Seafrost
- ◆ Private rear courtyard garden
- ◆ EPC rating C

2  1  2 

  
Local knowledge, national reach



Northwood are delighted to welcome to market this recently refurbished, two-bedroom, two-bathroom, mid-terraced house in the popular Redoubt area of Eastbourne.

Accommodation comprises: porch, living room, kitchen/diner, two double bedrooms and two shower rooms.

Further benefits include free on-street parking, gas central heating, double-glazing and private rear courtyard garden.

Located in the popular Redoubt area of Eastbourne, close to Princes Park only a few minutes' walk from local shops and cafes, the Sovereign Centre and the seafront, this cosy home is perfect for couples and small families.

Please view our immersive virtual tour to fully appreciate this fantastic property:

<https://tour.giraffe360.com/a57ad52109be46dfaf74a2870bd78acd>

Mobile Phone Coverage and Broadband speeds can be checked on the Ofcom website:

<https://checker.ofcom.org.uk/>





---

Council Tax Band B: £2065

Holding Deposit: £290.00 (equivalent to one week's rent)

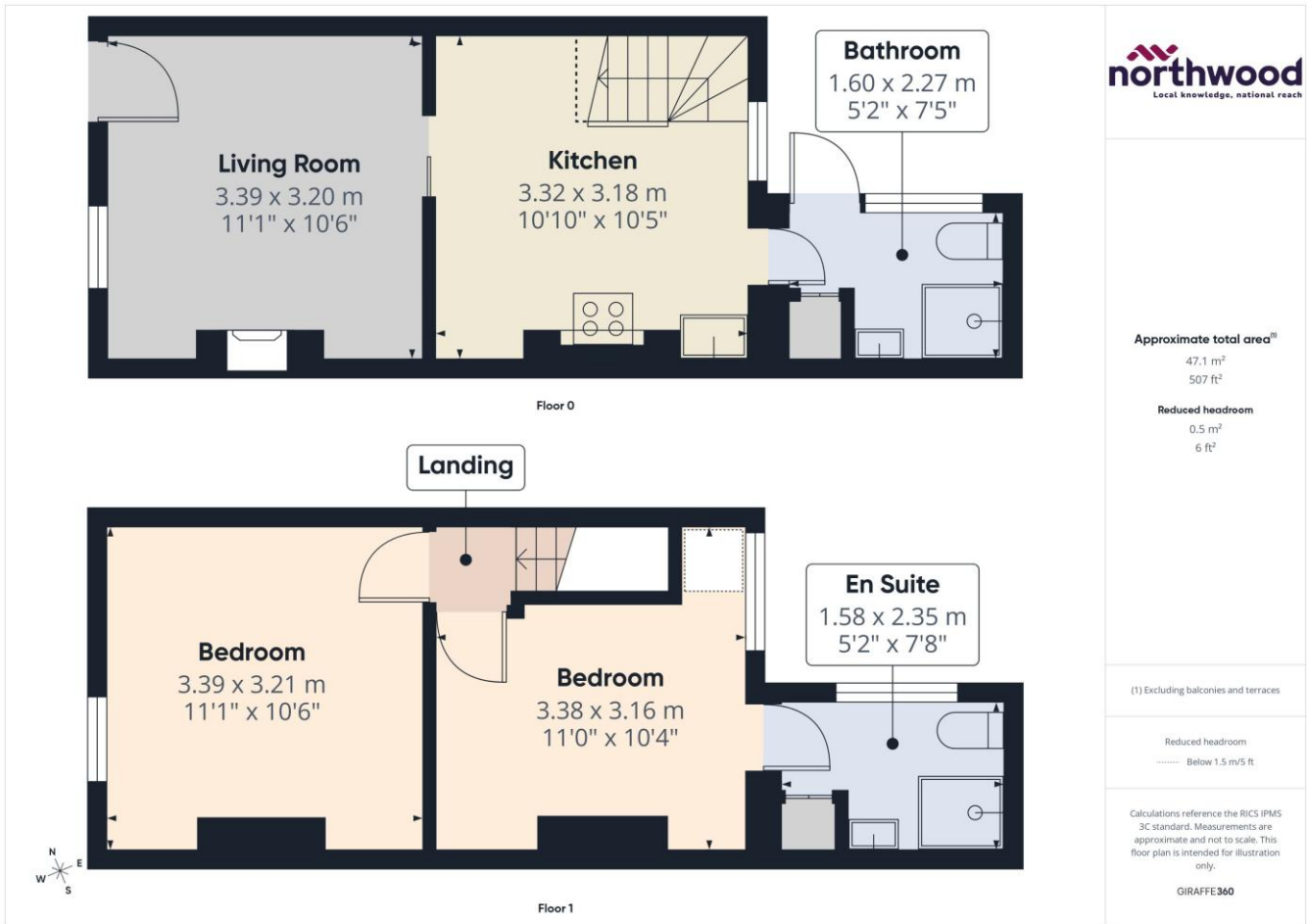
Full Deposit: £1440.00 (holding deposit + equivalent of four weeks' rent)

1st month's rent + Full Deposit: £2740.00

Total household income must exceed £39,000.00 to be considered for this property.

This property is managed by Northwood, should a maintenance issue arise, it can be reported 24 hours a day via our website.





SEE MORE ONLINE

**Northwood**  
 81-83 South Street  
 Eastbourne  
 BN21 4LR  
 01323 744544  
 eastbourne@northwooduk.com

**northwood**  
 Local knowledge, national reach