



CHESTERTONS

## 50 Marsh Wall

E22

£5,000 per month  
(£1,153.85 per week)

A stunning 2 bed apartment on the 35th floor of the highly sought after Aspen development. This new landmark residence has a huge number of amenities and with fantastic transport links, all set within one of the most desirable locations in London.

CHESTERTONS



# 50 Marsh Wall

E22

- A stunning 2 bed, 2 bath property
- 24h concierge
- Featuring facilities like swimming pool and gym
- on the 35th floor with views



These stunning homes with a wealth of resident amenities tower above this newly landscaped destination with its hotel, cafes, shops, community centre, health, education and a charming Victorian public house. Aspen is more than just a home. It's a lifestyle.

This distinctive addition to the London skyline makes not only a stunning architectural statement but also brings a new community to the area. Aspen is the jewel in the crown of Consort Place, a fresh destination with cafés, bars, activity spaces, education, health centre, restaurant and the international Dorsett hotel. The residences are the cornerstone of a vibrant pocket neighbourhood, that will be somewhere to meet, relax, work, study or just enjoy throughout the year and at any time of day.

---

<b>Minimum Term:</b>	12 months
<b>Deposit Required:</b>	£0.00
<b>Local Authority:</b>	Tower Hamlets
<b>Council Tax Band:</b>	NA
<b>EPC Rating:</b>	To be confirmed

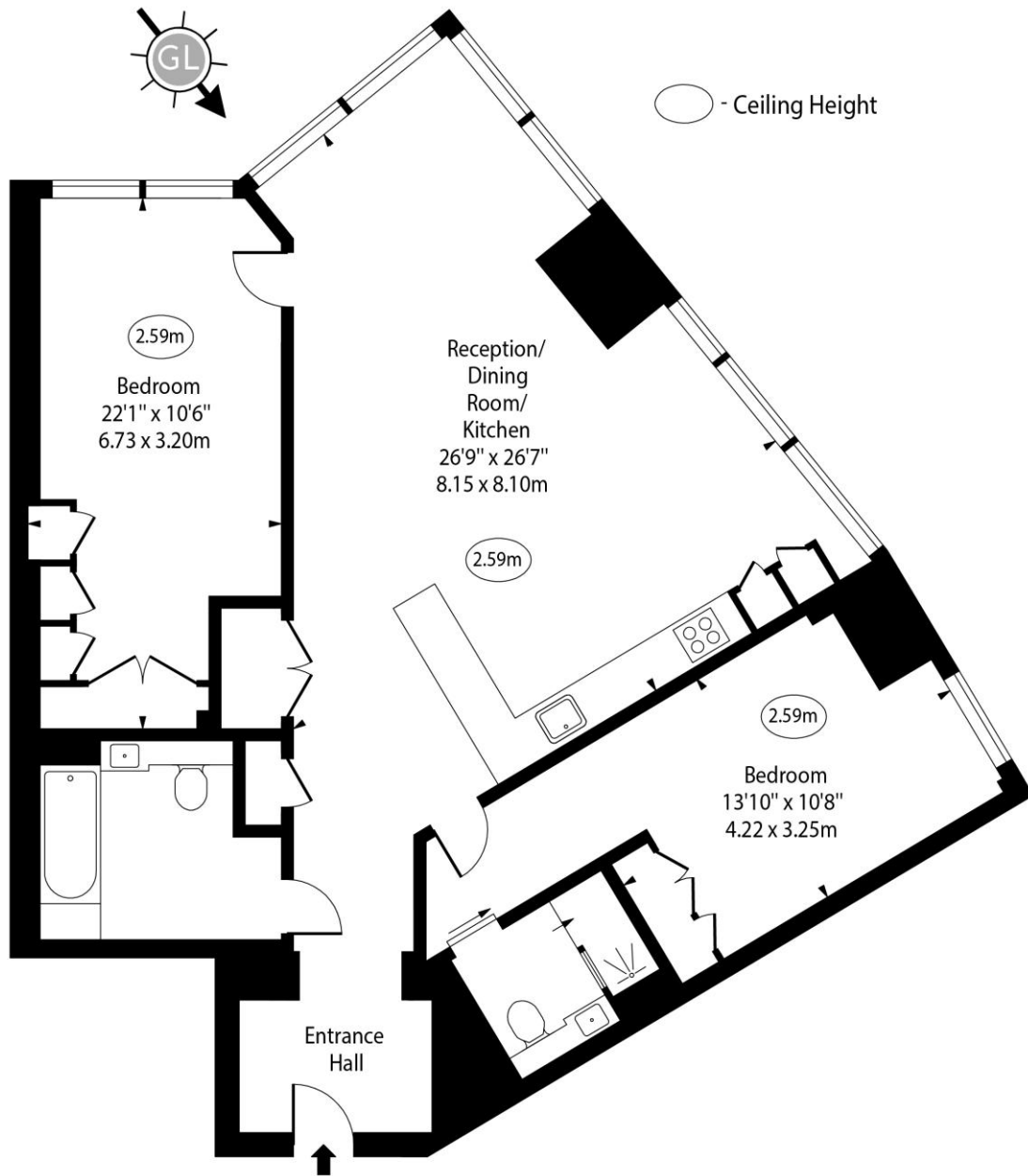
---

### *Chestertons Canary Wharf & Greenwich Lettings*

Harbour Island  
28 Harbour Exchange Square  
Canary Wharf & Docklands  
London  
E14 9GE  
canarywharflettingsusers@chestertons.co.uk  
02075108310

Additional tenant charges apply (fees apply to non-AST tenancies only)  
Tenancy Agreement Fee: £300  
References per Tenant/Guarantor: £60  
Inventory check (approx. £100 – £250 inc. VAT)  
[chestertons.co.uk/property-to-rent/applicable-fees](https://www.chestertons.co.uk/property-to-rent/applicable-fees)

The Aspen,  
Marsh Wall, E22



Thirty Fifth Floor

Approx Gross Internal Area 1164 Sq Ft - 108.14 Sq M

Every attempt has been made to ensure the accuracy of the floor plan shown. However, all measurements, fixtures, fittings, and data shown are approximate interpretations and for illustrative purposes only. Measured according to the RICS. Not To Scale.

[www.goldlens.co.uk](http://www.goldlens.co.uk)

Ref. No. 031754M