



Connells

Fairview Road
Wednesfield Wolverhampton



Property Description

Connells Wolverhampton are delighted to bring to the market this exceptionally large and spacious semi detached family property. Benefiting from NO ONWARD CHAIN, viewing is highly recommended. Contact Connells today to book your viewing.

The property comprises of entrance hall, lounge, large extended kitchen family diner, conservatory and downstairs wet room. On the first floor there are a selection of five bedrooms and a family bathroom. Externally there is a large driveway providing off road parking, garage storage area and a generous rear garden ideal for those with families and pleasant field views to rear.

The Location & Area

Situated between Deyncourt Road and Mill Lane on the ever popular Fairview Road which is ideally located for the ever popular Deyncourt Primary school. The property also has fantastic commuting access to the M6 and M54 motorways along with great access to New Cross Hospital, Bentley Bridge retail park and Wednesfield shopping centre.

Entrance Hall

Door to front, central heating radiator, stairs to first floor landing, doors to various rooms.

Lounge

Double glazed bow window to front, central heating radiator, door to entrance hall.

Kitchen Family Diner

Double glazed window to rear, a range of wall and base units, integrated appliances, door to entrance hall, sliding door to conservatory,

Conservatory

Double glazed windows.

Wet Room

Shower, low flush toilet, pedestal sink, door to inner hall.

First Floor Landing

Doors to various rooms, loft access which is boarded with ladder.

Bedroom One

Double glazed bay window to front, fitted wardrobe, central heating radiator, door to first floor landing.

Bedroom Two

Double glazed window to rear, fitted wardrobe, central heating radiator, door to first floor landing.

Bedroom Three

Double glazed window to front, fitted wardrobe, central heating radiator, door to first floor landing.

Bedroom Four

Double glazed window to front, central heating radiator, door to first floor landing.

Bedroom Five

Double glazed window to rear, central heating radiator, door to first floor landing.

Family Bathroom

Double glazed window to rear, panelled bath with electric shower, pedestal sink, low flush toilet, central heating radiator, door to first floor landing.

Outside Front

Driveway providing ample off road parking.

Storage Garage

For storage only. Door to front, utility style area, door to inner hall.

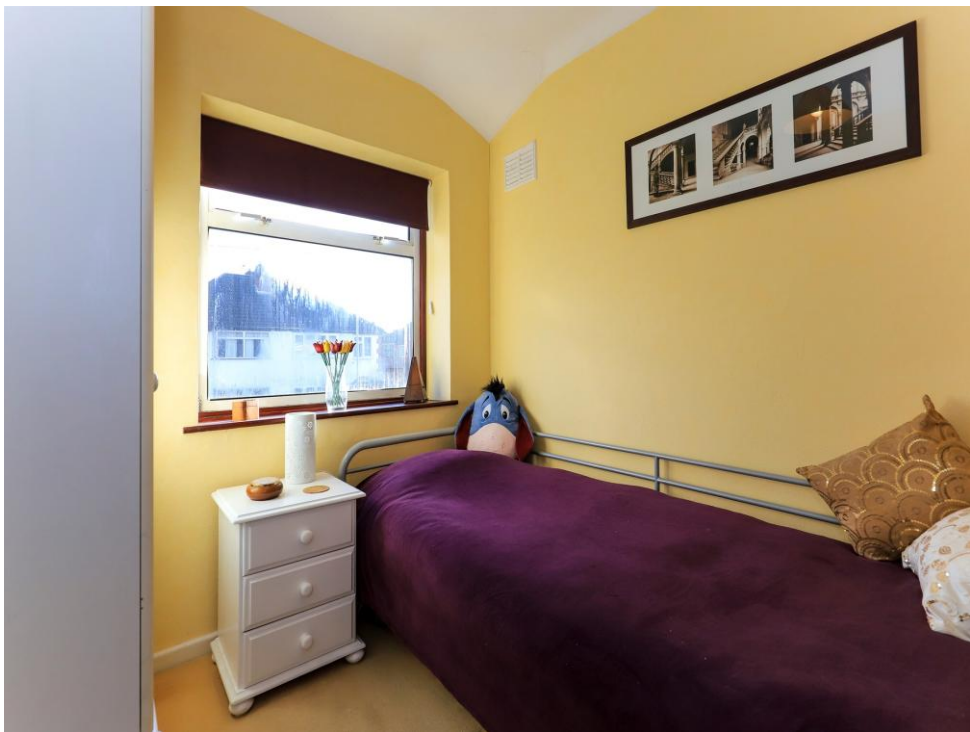
Outside Rear

Good size enclosed rear garden with a range of fencing.

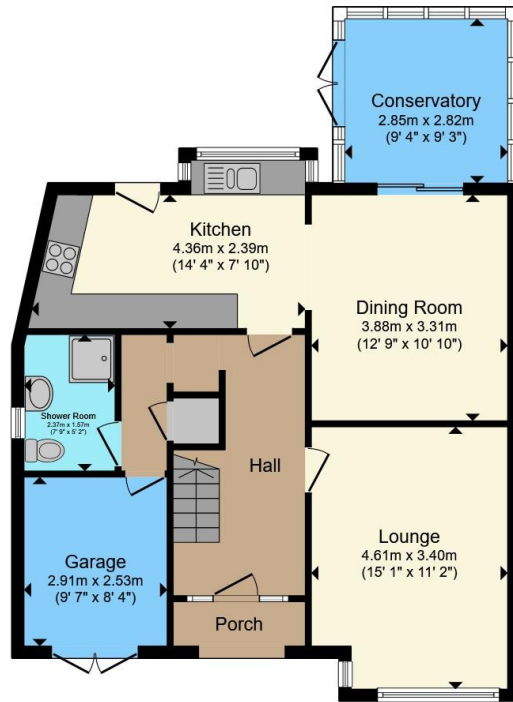
Agents Note

Please note the garage is only suitable for storage of various items and is unable to fit a car.









Ground Floor



First Floor

Total floor area 140.5 m² (1,512 sq.ft.) approx

This floor plan is for illustrative purposes only. It is not drawn to scale. Any measurements, floor areas (including any total floor area), openings and orientation are approximate. No details are guaranteed, they cannot be relied upon for any purpose and they do not form part of any agreement. No liability is taken for any error, omission or misstatement. A party must rely upon its own inspection(s). Powered by www.propertybox.io



To view this property please contact Connells on

T 01902 710 170
E wolverhampton@connells.co.uk

81-83 Darlington Street
 WOLVERHAMPTON WV1 4EX

EPC Rating: D Council Tax Band: C

Tenure: Freehold

view this property online connells.co.uk/Property/WVH322621



1. MONEY LAUNDERING REGULATIONS Intending purchasers will be asked to produce identification documentation at a later stage and we would ask for your co-operation in order that there will be no delay in agreeing the sale. 2. These particulars do not constitute part or all of an offer or contract. 3. The measurements indicated are supplied for guidance only and as such must be considered incorrect. Potential buyers are advised to recheck measurements before committing to any expense. 4. We have not tested any apparatus, equipment, fixtures, fittings or services and it is in the buyers interest to check the working condition of any appliances.

Connells Residential is registered in England and Wales under company number 1489613, Registered Office is Cumbria House, 16-20 Hockliffe Street, Leighton Buzzard, Bedfordshire, LU7 1GN. VAT Registration Number is 500 2481 05.

See all our properties at www.connells.co.uk | www.rightmove.co.uk | www.zoopla.co.uk

Property Ref: WVH322621 - 0004