



jordanfishwick

Oakwood Avenue

£1,795 PCM



Oakwood Avenue, Wilmslow, SK9 5LQ

£1,795 PCM

Situated just off Racecourse Road in the highly desirable South Wilmslow area is this attractive three-bedroom semidetached home.

Close to Lindow Common a designated Local Nature Reserve and only a short drive away from Wilmslow town centre and the train station which offers a direct service to London Euston and Manchester City Centre. Motorway networks and Manchester International Airport are all within easy reach.

Entrance porch area leading into the spacious entrance hallway with understairs storage, open plan living / dining space with feature bay window, UPVC french doors to the rear. Modern fitted kitchen with electric oven, fridge freezer, washing machine and dishwasher,

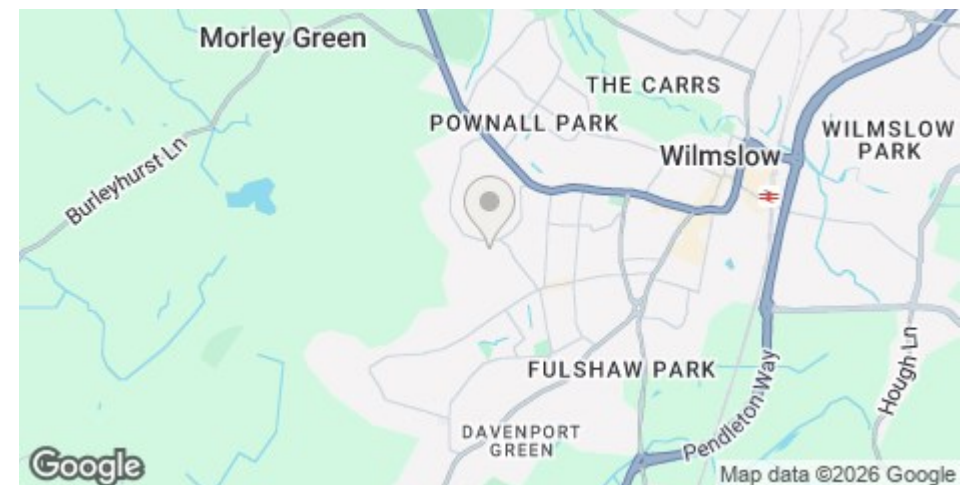
To the first floor three well-proportioned bedrooms all with heaps of natural light and a well proportioned family bathroom featuring a three piece white bathroom suite with shower over bath. Externally, the property provides off road parking to the front aspect with an EV charger port and a low maintenance garden to the rear that is mainly laid to patio.

AVAILABLE BEG JULY PART FURNISHED

Contact Wilmslow 01625 536300 £1795.00pcm

COUNCIL TAX D

EPC D



- SOUTH WILMSLOW LOCATION
- CUL DE SAC
- THREE BEDROOMS
- OFF ROAD PARKING AND EV CHARGER
- LOW MAINTENANCE GARDEN
- COUNCIL TAX D
- EPC D

Postcode - SK9 5LQ

EPC Rating - D

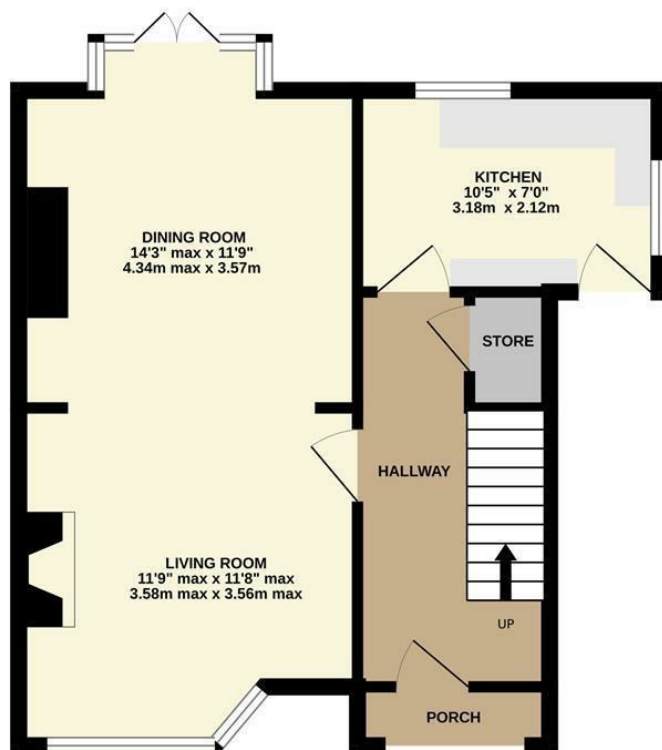
Floor Area - sq ft

Local Authority - Cheshire East

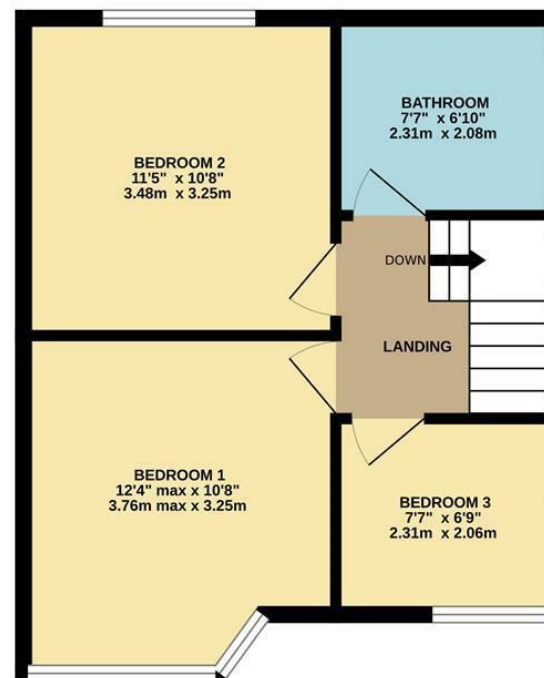
Council Tax - D



GROUND FLOOR



1ST FLOOR



Measurements are approximate. Not to scale. Illustrative purposes only
 Made with Metropix ©2026



These particulars are believed to be accurate but they are not guaranteed and do not form a contract. Neither Jordan Fishwick nor the vendor or lessor accept any responsibility in respect of these particulars, which are not intended to be statements or representations of fact and any intending purchaser or lessee must satisfy himself by inspection or otherwise as to the correctness of each of the statements contained in these particulars. Any floorplans on this brochure are for illustrative purposes only and are not necessarily to scale.

Offices at: Offices at Chorlton, Didsbury, Disley, Hale, Glossop, Macclesfield, Manchester Deansgate, Manchester Whitworth Street, New Mills, Sale, Wilmslow and Withington

01625 502222