



2 Colwick Manor Farm, Colwick – NG4 2DP

Guide Price £210,000



2 Colwick Manor Farm

Colwick, Nottingham

NO CHAIN! End townhouse on a generous corner plot with local amenities, buses and Colwick Country Park all within easy reach! Ideal for first-time buyers, downsizers or investors. A must-view!

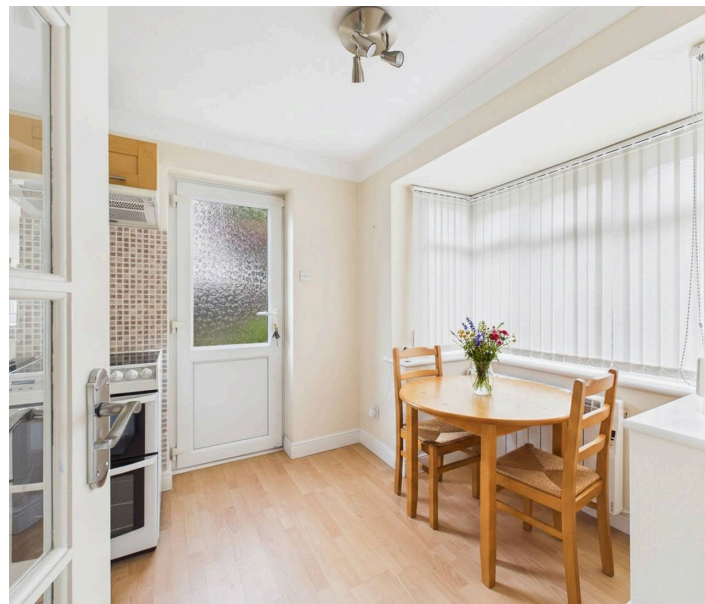
Council Tax band: B

Tenure: Freehold

EPC Energy Efficiency Rating: D

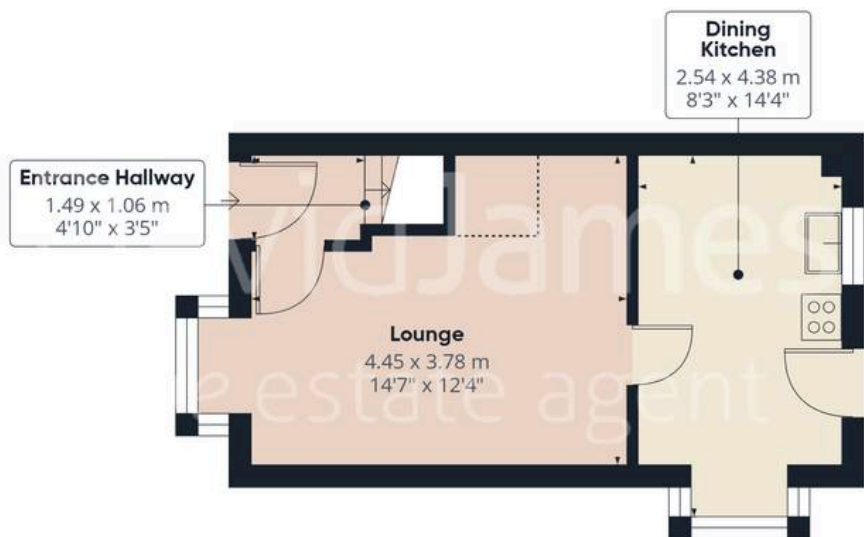
EPC Environmental Impact Rating:

- End townhouse available with no upward chain
- Located on a generous and desirable corner plot
- Close to amenities and transport links with Colwick Country Park on the doorstep
- Ideally suited to first-time buyers, downsizers or buy-to-let investors alike
- Bright lounge featuring a walk-in box window and wood-effect flooring
- Fitted kitchen with fitted units, ample worktops and dining space
- Two first-floor bedrooms (main bedrooms with in-built wardrobes)
- Shower room fitted with a three-piece suite and an electric shower
- Spacious side and rear gardens with paved seating areas, lawn and established planting
- Separate garage plus additional off-street parking for one vehicle









Floor 0 Building 1



Floor 1 Building 1



Floor 0 Building 2

Approximate total area⁽¹⁾

63.9 m²
687 ft²

Reduced headroom

0.9 m²
10 ft²

(1) Excluding balconies and terraces

Reduced headroom

----- Below 1.5 m/5 ft

Calculations reference the RICS IPMS 3C standard. Measurements are approximate and not to scale. This floor plan is intended for illustration only.

GIRAFFE360



David James Estate Agents

376 Carlton Hill, Carlton - NG4 1JA

0115 987 8957 • carlton@david-james.com • www.david-james.com

These particulars are produced in good faith and are set out as a general guide only. Measurements are approximate and floor plans are for illustrative purposes only. Services have not been tested. We have established professional relationships with third-party suppliers for the provision of services to Clients, details of which can be found on the property listing page on our website.