



**Constables**  
SALES & LETTINGS

Hooton Road

Willaston, Neston

£550,000



Located in the heart of the ever-popular village of Willaston, this exceptional detached residence enjoys a wonderfully private setting with open paddock views to the rear, generous accommodation and a beautifully orientated south-facing garden. Offered to the market with no onward chain.

The location perfectly balances village living with everyday convenience. Willaston is renowned for its welcoming community, highly regarded primary school, village pubs, café and local amenities, while nearby Neston provides a wider range of shops, restaurants and transport links. Surrounded by picturesque Cheshire countryside, the area offers an enviable lifestyle with scenic walks and outdoor pursuits right on the doorstep.

The accommodation is both versatile and spacious, lending itself equally well to families, those seeking multi-generational living or buyers looking for flexible bedroom arrangements. A welcoming entrance hallway leads through to a generous lounge, where glazed doors open into a superb conservatory overlooking the private rear garden, creating an ideal space for relaxing or entertaining throughout the seasons. At the heart of the home is a spacious kitchen and dining room, perfectly suited to modern family life.

The ground floor is completed by two well-proportioned double bedrooms and a family bathroom, while the first floor is dedicated to an impressive principal suite featuring a walk-in wardrobe and en-suite shower room, providing a peaceful retreat away from the main living spaces.

Externally, a large driveway provides ample off-road parking and leads to a single garage. To the rear, the beautifully established south-facing garden enjoys an excellent degree of privacy, backing directly onto open paddocks.



**Constables**  
SALES & LETTINGS

- Detached Property
- Three Bedrooms
- Garage
- No Onward Chain

- Highly Sought After Location
- Three Reception Rooms
- Good Sized Private PLOT

- Overlooking Paddocks at the Rear
- Two Bathrooms
- Close to Willaston Village Centre

### Hallway

### Living Room

13'11" x 17'6" (4.25m x 5.35m)

### Conservatory

12'4" x 12'3" (3.76m x 3.75m)

### Kitchen-Dining Room

15'7" x 13'4" (4.76m x 4.08m)

### Bedroom Two

10'10" x 13'10" (3.31m x 4.24m)

### Bedroom Three

14'3" x 11'2" (4.35m x 3.41m)

### Bathroom

6'8" x 10'1" (2.04m x 3.08m)

### First Floor Landing

### Bedroom One

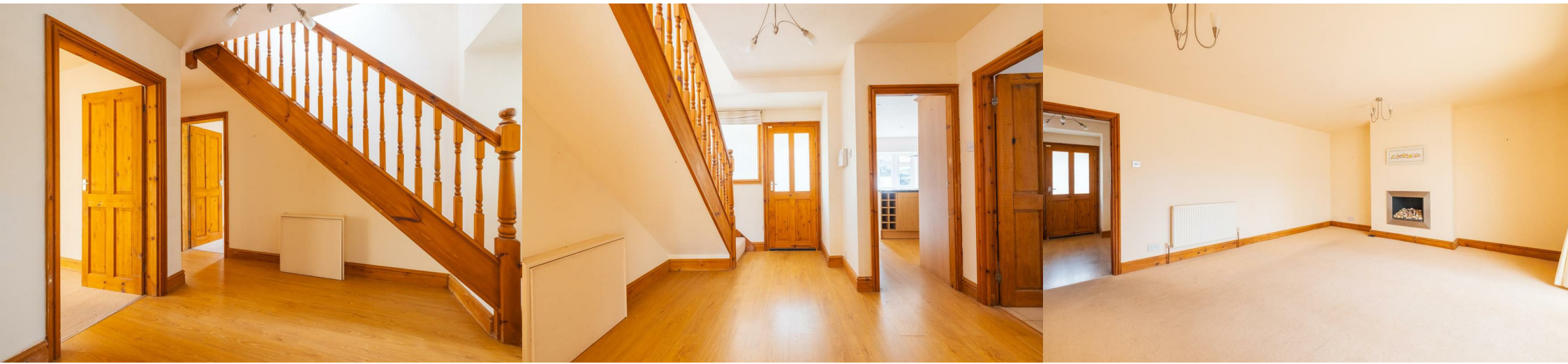
21'5" x 9'11" max (6.53m x 3.03m max)

### En-suite

### Walk In Wardrobe


### Garage

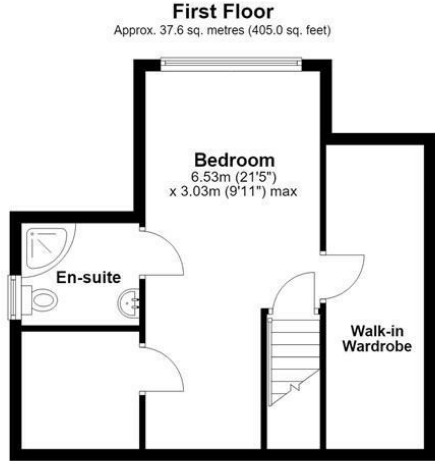
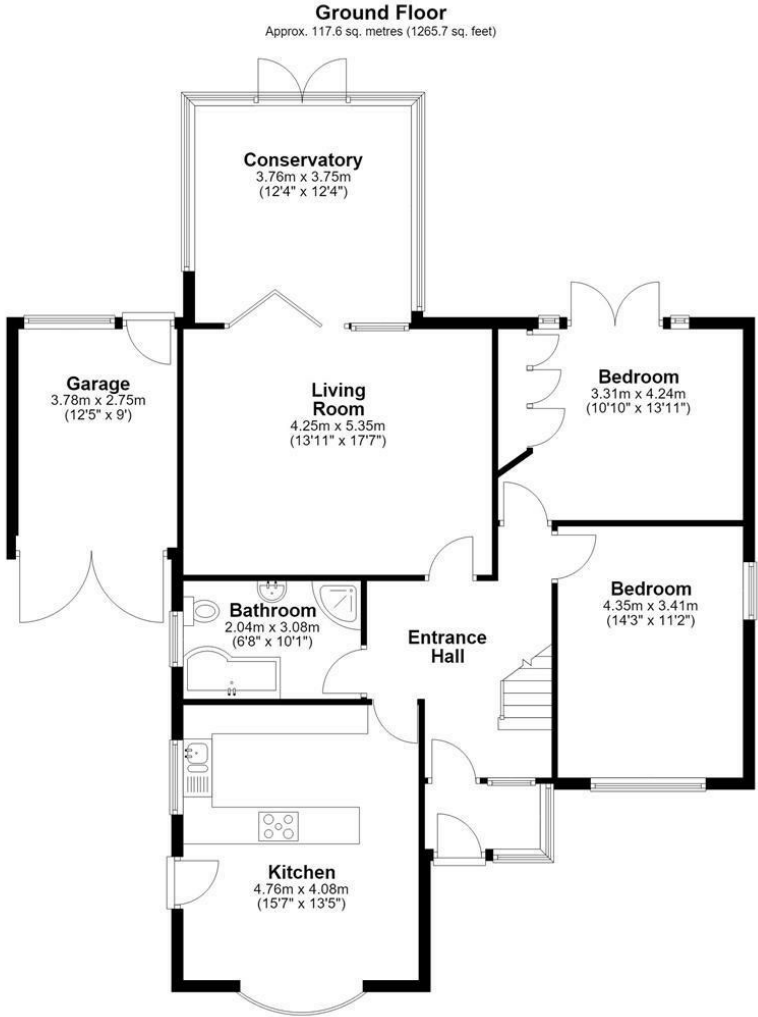
approx 12'4" x 9'0" (approx 3.78m x 2.75m)



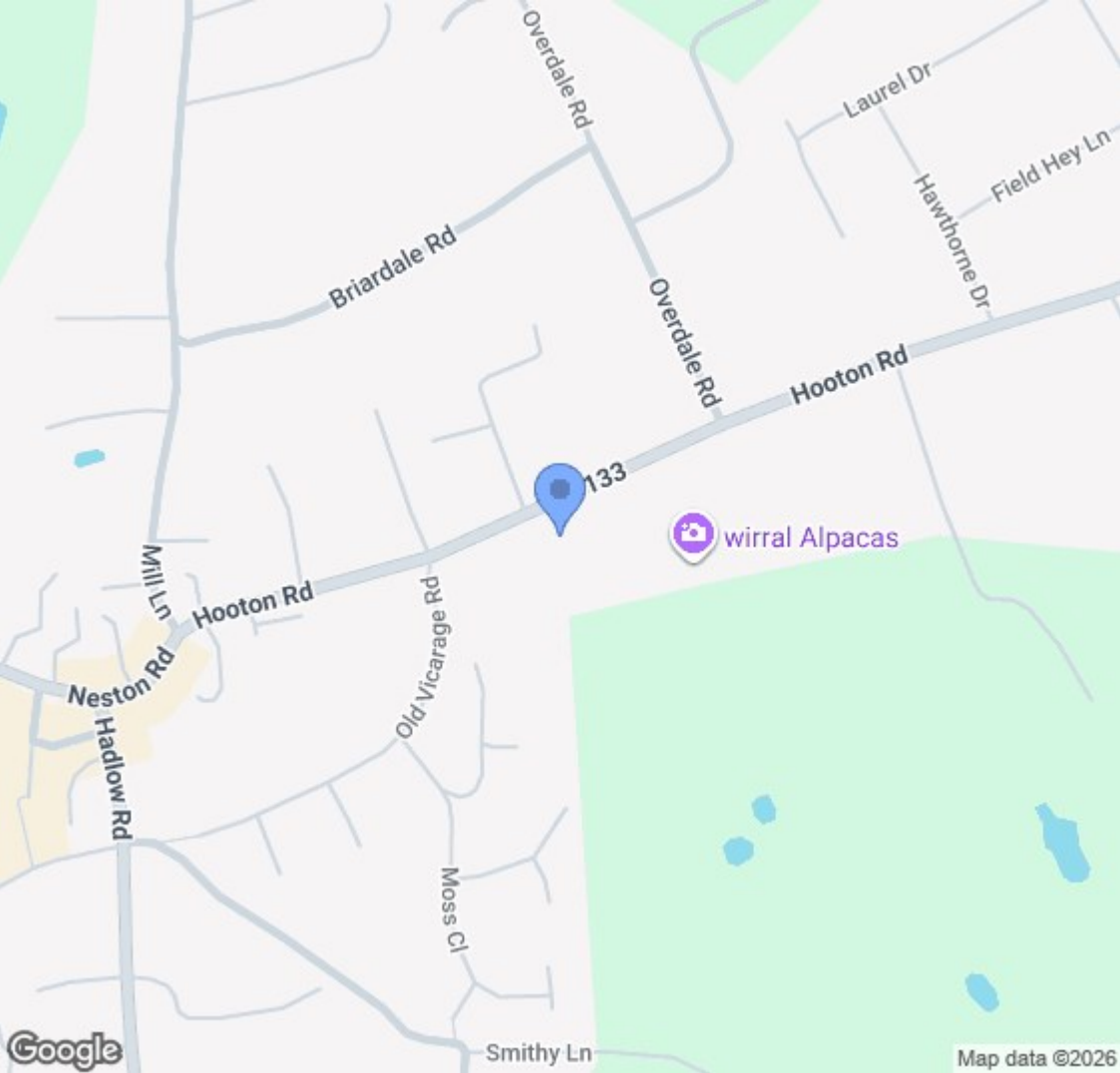
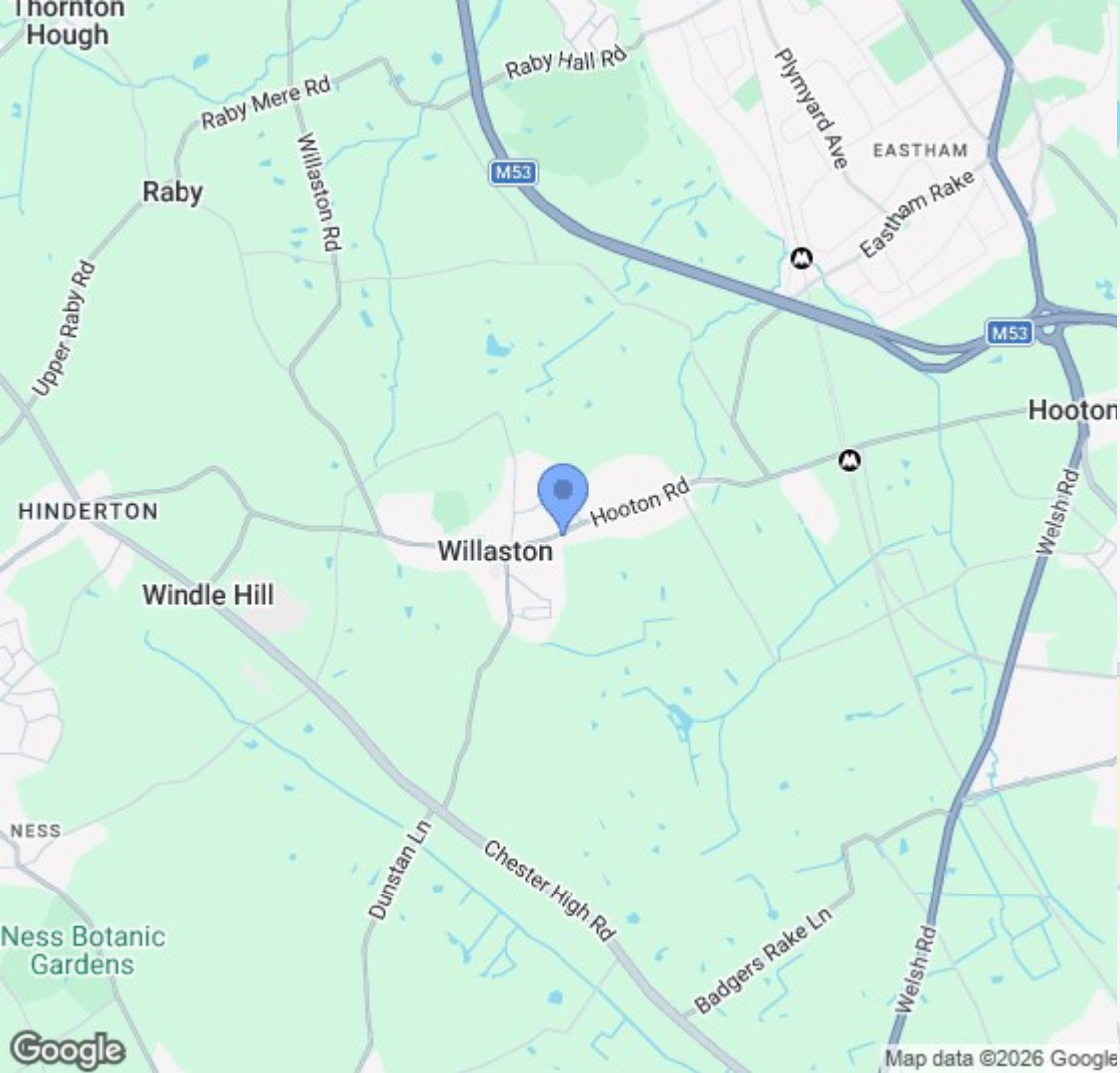


# EPC & Floor Plan

Energy Efficiency Rating		
	Current	Potential
<i>Very energy efficient - lower running costs</i>		
(92 plus) <b>A</b>		
(81-91) <b>B</b>		
(69-80) <b>C</b>		
(55-68) <b>D</b>	63	74
(39-54) <b>E</b>		
(21-38) <b>F</b>		
(1-20) <b>G</b>		
<i>Not energy efficient - higher running costs</i>		
<b>England &amp; Wales</b>	EU Directive 2002/91/EC	



Total area: approx. 155.2 sq. metres (1670.7 sq. feet)  
30 Hooton Road, Willaston, NESTON



Location Map

# Constables

S A L E S   &   L E T T I N G S

21 High Street, Neston

South Wirral, Neston, Cheshire

[www.constablesestateagents.co.uk](http://www.constablesestateagents.co.uk)

[info@constablesestateagents.co.uk](mailto:info@constablesestateagents.co.uk)

0151 353 1333