



Connells

Gresley Court
Grantham



Property Description

Connells are delighted to bring to the market this well presented three bedroom house with off road parking!

The ground floor comprises a welcoming entrance porch leading into the front hallway, with stairs rising to the first floor. To the front of the property is a spacious living room, providing a comfortable setting for relaxation and entertaining and access to the conservatory, which provides additional living space overlooking the garden. The property benefits from a generous kitchen/diner, offering ample space for both cooking and dining. A useful ground floor WC and separate store complete the downstairs accommodation.

The first floor features a central landing giving access to three well-sized bedrooms, The first floor is completed by a family bathroom and a store cupboard.

Externally, To the front there is an enclosed large gravel driveway. To the rear there is an enclosed south facing garden with a shed, summer house, lawned area, artificial grass area.

Early viewing is recommended to appreciate the space and potential this home has to offer.

Ground Floor

Entrance Porch

With a door leading to the entrance hall, windows to the front.

Entrance Hall

With stairs leading to the first floor, doors leading to the living room and the kitchen/diner, wood laminate flooring, spot light to the ceiling.

Living Room

With a double glazed window to the front, two radiators, wood laminate flooring, patio doors leading to the conservatory.

Conservatory

With windows to all sides, doors leading to the rear garden, wood laminate flooring and power/electric.

Kitchen / Diner

With a double glazed window to the front, radiator, wood laminate flooring, range of wall and base units, lights to the bottom of the base units, space for free standing appliances, space and plumbing for washing machine.

Store

With a double glazed window to the rear, double glazed door leading to the rear garden, radiator, wood laminate flooring, inbuilt cupboard.

Inner Hall

With doors leading to the downstairs W.C, kitchen / diner and the conservatory.

Downstairs W.C

With a double glazed window to the rear, W.C, wash hand basin with vanity unit.

First Floor

Landing

With doors leading to three bedrooms, bathroom and a large cupboard. Loft access, carpet.

Bedroom One

Double bedroom, double glazed window to the front, radiator, carpet, large inbuilt cupboard.

Bedroom Two

Double bedroom, double glazed window to the front, radiator, carpet.

Bedroom Three

Single bedroom, double glazed window to the rear, carpet, radiator.

Bathroom

With a double glazed window to the rear, p-bath with over shower, all tiled walls, wood laminate flooring, W.C, wash hand basin with vanity unit, radiator.

Outside

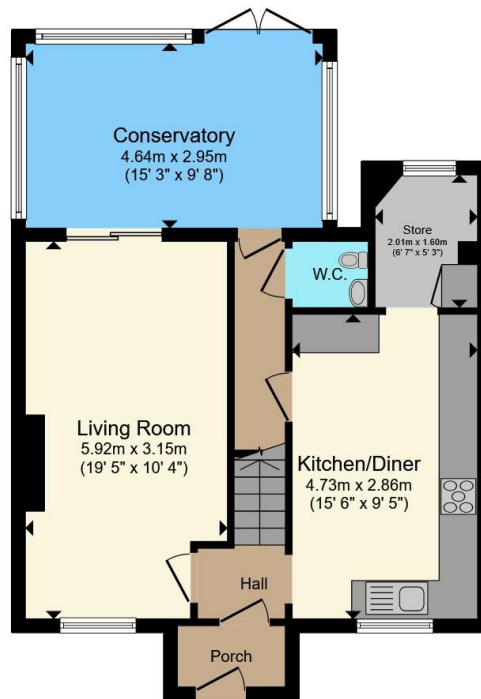
Summer House

With electrics.

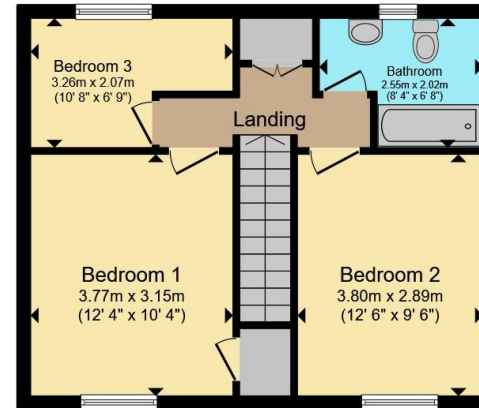








Ground Floor



First Floor

Total floor area 100.7 m² (1,084 sq.ft.) approx

This floor plan is for illustrative purposes only. It is not drawn to scale. Any measurements, floor areas (including any total floor area), openings and orientation are approximate. No details are guaranteed, they cannot be relied upon for any purpose and they do not form part of any agreement. No liability is taken for any error, omission or misstatement. A party must rely upon its own inspection(s). Powered by www.propertybox.io



To view this property please contact Connells on

T 01476 590 050
E grantham@connells.co.uk

2 Watergate
 GRANTHAM NG31 6PR

EPC Rating: B Council Tax
 Band: A

Tenure: Freehold

view this property online connells.co.uk/Property/GRM309290



1. MONEY LAUNDERING REGULATIONS Intending purchasers will be asked to produce identification documentation at a later stage and we would ask for your co-operation in order that there will be no delay in agreeing the sale. 2. These particulars do not constitute part or all of an offer or contract. 3. The measurements indicated are supplied for guidance only and as such must be considered incorrect. Potential buyers are advised to recheck measurements before committing to any expense. 4. We have not tested any apparatus, equipment, fixtures, fittings or services and it is in the buyers interest to check the working condition of any appliances.

Connells Residential is registered in England and Wales under company number 1489613, Registered Office is Cumbria House, 16-20 Hockliffe Street, Leighton Buzzard, Bedfordshire, LU7 1GN. VAT Registration Number is 500 2481 05.

See all our properties at www.connells.co.uk | www.rightmove.co.uk | www.zoopla.co.uk

Property Ref: GRM309290 - 0002