



## Scotts Avenue, TW16

### £430,000

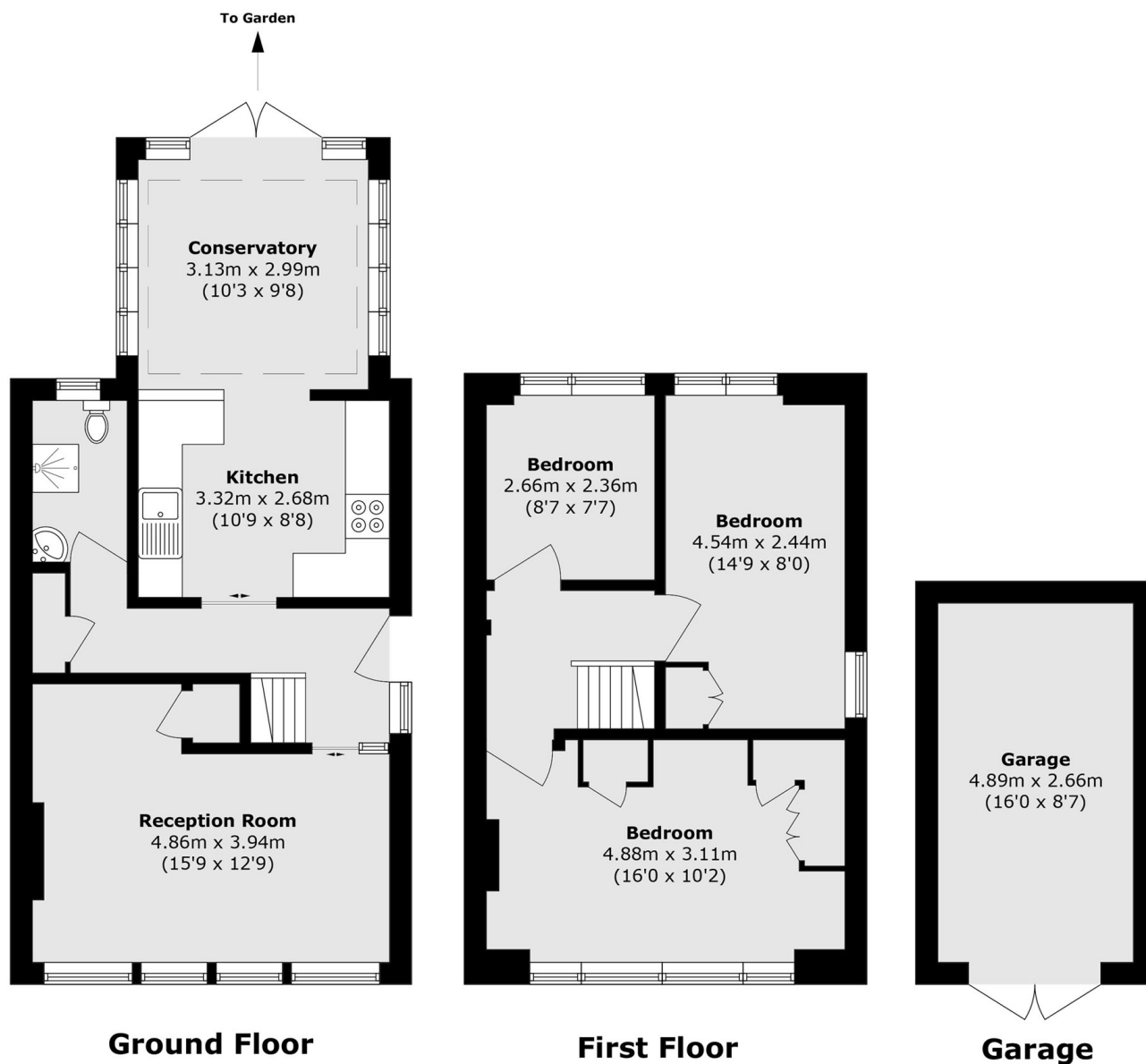
A spacious three bedroom semi-detached house with off-street parking, a conservatory and a garage. This family home is full of potential and is being sold with the added bonus of no onward chain.

Scotts Avenue is a wonderful location, this popular residential road is located off of Cadbury Road and is perfect for families. The amenities at Sunbury Cross and Sunbury Station which provides a direct service into London Waterloo are just over half a mile away.

### Features

- Semi-Detached
- Three Bedrooms
- Conservatory
- Off-Street Parking
- Garage
- No Onward Chain

# Scotts Avenue, Sunbury-On-Thames, TW16



Total area (approx.): 85.1 sq. m (916.0 sq. ft)  
Garage area (approx.): 13.0 sq. m (139.9 sq. ft)