



Mapesbury Gardens | Brondesbury | London | NW6

Asking Price - £485,000





- One Bedroom
- Private Balcony
- Share of Freehold
- Close to transport links
- One bathroom
- Communal Gardens
- Bike Store
- Off street parking available

Set within a new apartment building on Mapesbury Gardens, this well presented one bedroom, one bathroom apartment offers well proportioned accommodation finished to a high standard throughout.

The property features wooden flooring across all principal rooms and a practical, well planned layout suited to contemporary living. Accommodation comprises one generously sized bedroom and one modern bathrooms. The reception space is bright and well laid out, complemented by a modern kitchen with stylish finishes designed for everyday use and a large private balcony which provides a valuable extension of the living space.



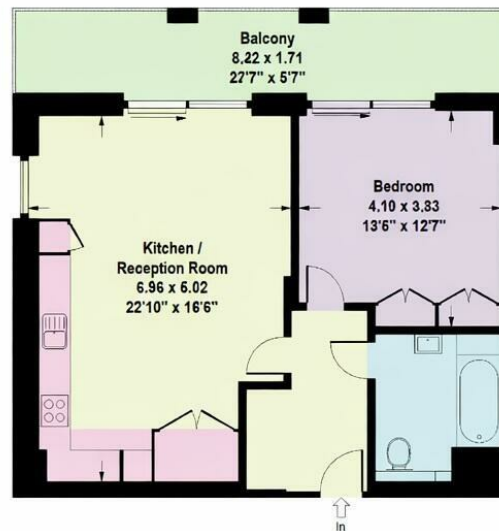




Mapesbury Gardens is conveniently positioned in NW6, within easy reach of local shops, cafés and amenities, as well as the wider offerings of Queen's Park, Kilburn and West Hampstead. The area is well regarded for its selection of highly rated schools, making it a popular choice for families.

Transport links are excellent, with Brondesbury Park (Overground), Kilburn (Jubilee Line) and Queen's Park (Bakerloo Line) all close by.

\* Please note some furniture has been digitally added



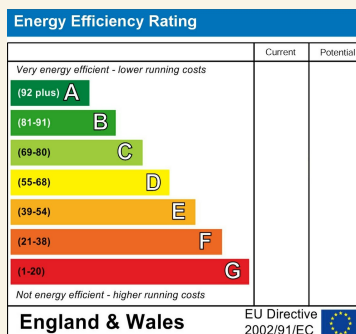
First Floor

**Approximate Gross Internal Area**  
**62.7 sq m / 675 sq ft**  
**Excluding Balcony - 13.8 sq m / 148 sq ft**

Flat 11, Mapesbury Gardens, NW2

Plan Scale : (A4 page) Survey Date : February 2024

Floor Plan produced for Draper by Mays Property Marketing © . Tel 020 3397 4594  
 Illustration for identification purposes only. Not to scale.  
 Orientation, measurements, and other details are approximate and for guidance only.  
 purchasers should verify details independently.  
 Where a room has a sloping ceiling the dotted line marks 1.50M height,  
 and all measurements shown are at floor level.



Council Tax Band **F** EPC Rating

24 Bristol Gardens  
 London  
 W9 2JQ  
[hello@draperlondon.com](mailto:hello@draperlondon.com)  
 0203 143 1900