

## Point Wharf Lane, TW8

£375,000

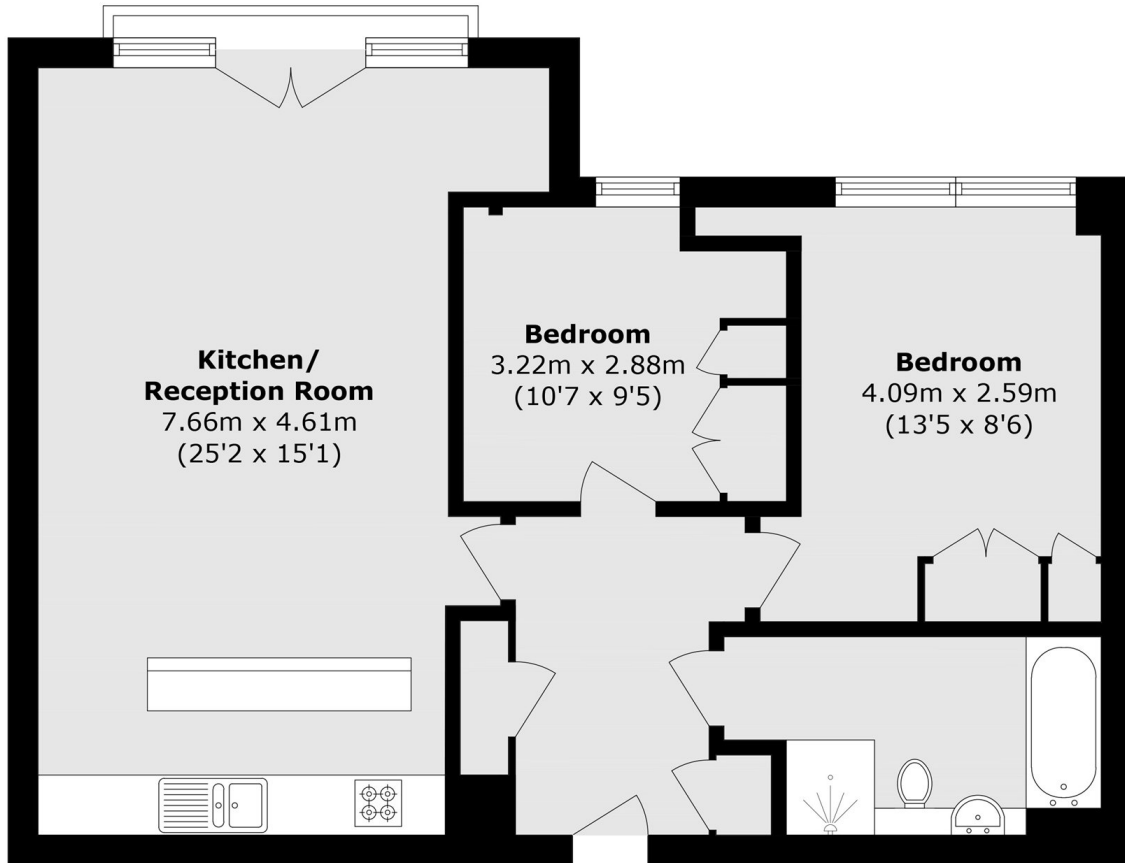
An exceptionally bright and well presented two bedroom apartment situated on the third floor of this well sought-after riverside development. With floor to ceiling windows, long lease, allocated parking and a modern finish.

Situated on the edge of the prestigious Ferry Quays waterside community, Point Wharf Lane is a popular riverside development close to Brentford High Street. It is within half a mile from Brentford overground station and a short drive from the M4/A4 providing great access in and out of London.

### Features

- Allocated Parking
- Two Double Bedrooms
- Lift Access
- Modern Finish
- Concierge
- No Onward Chain

Point Wharf Lane,  
Brentford, TW8



Total area (approx.): 73.5 sq. m (791.1 sq. ft)