



KIRKDALE, SE26

£2,100 per month

Garden flat
Two double bedrooms
Separate kitchen
Private rear garden
Excellent local amenities
Energy rating: d

@marshandparsons
marshandparsons.co.uk

MARSH &
PARSONS



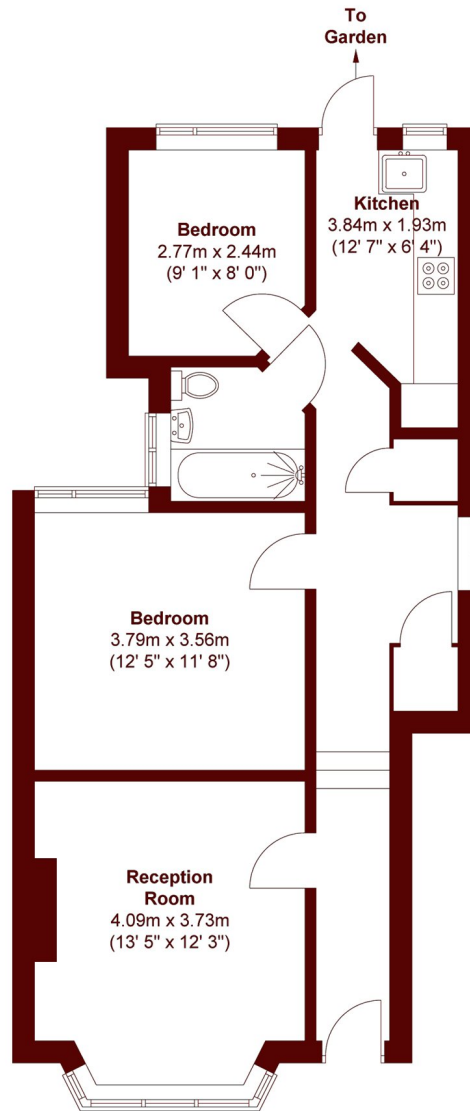
ABOUT THE PROPERTY

A well presented two bedroom garden flat maisonette situated within the heart of Sydenham. Comprising a spacious separate reception room and a separate kitchen with direct access to a private garden, there are two double bedrooms.

Sydenham London overground and Penge East (for Victoria) are also within close proximity, as is Crystal Palace Park.



STEP INSIDE KIRKDALE



Total area (approx.) : 61.6 sq. m (663 sq. ft)

Brockley
020 8815 2230

Energy Rating: D We aim to make our particulars both accurate and reliable. However, they are not guaranteed; nor do they form part of an offer or contract. If you require clarification on any points then please contact us, especially if you're traveling some distance to view. Please note that appliances and heating systems have not been tested and therefore no warranties can be given as to their good working order

**MARSH &
PARSONS**