



PROPERTY EXPERTS
SINCE 1989



MABLEY STREET, E9

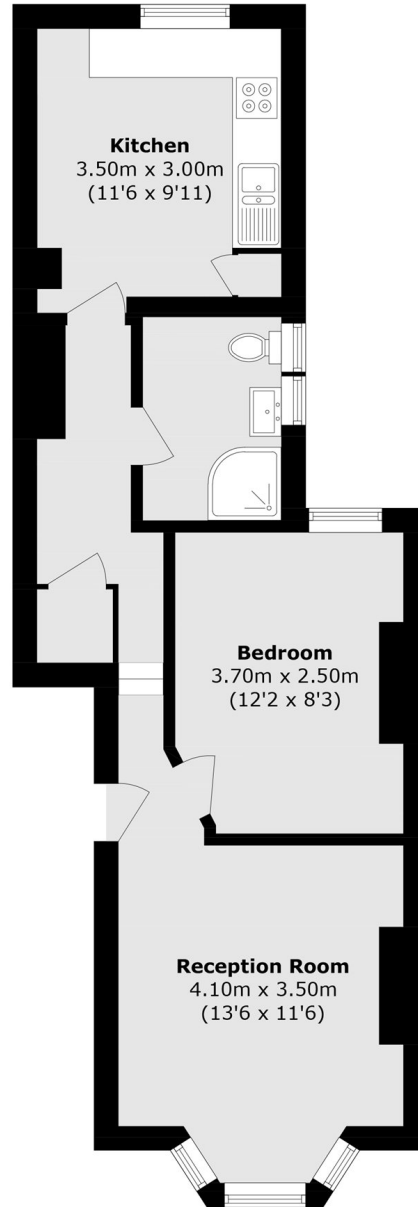
£360,000

This attractive one bedroom flat, located within a Victorian period conversion is situated within a quiet, desirable residential street just moments away from local amenities and Victoria Park.

- One Double Bedroom
- Close To Victoria Park
- Quiet Residential Street
- Share Of Freehold
- Excellent Transport Links
- Chain Free



PROPERTY EXPERTS
SINCE 1989



Total area (approx.): 46.8 sq. m (503.8 sq. ft)

SOVEREIGN HOUSE

213 Victoria Park Road,
London, E9 7HD
020 8985 5800

Energy Rating: We aim to make our particulars both accurate and reliable. However they are not guaranteed; nor do they form part of an offer or contract. If you require clarification on any points then please contact us, especially if you're traveling some distance to view. Please note that appliances and heating systems have not been tested and therefore no warranties can be given as to their good working order.