



15 Portland Rise

Corsham, SN13 9GT

Guide Price £500,000

Welcome to 15 Portland Rise, Corsham. A well presented four bedroom detached home with garage and driveway parking for two vehicles.

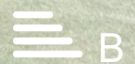
The ground floor accommodation comprises entrance hall, cloakroom, kitchen dining room with patio doors onto the rear garden, utility space and lounge. The first floor accommodation comprises landing with airing cupboard, principal bedroom with en-suite shower room, three further bedrooms and bathroom.

The property further benefits from an enclosed South facing rear garden with gated access, a single garage with power and lighting, driveway parking for two cars, gas central heating and double glazing.

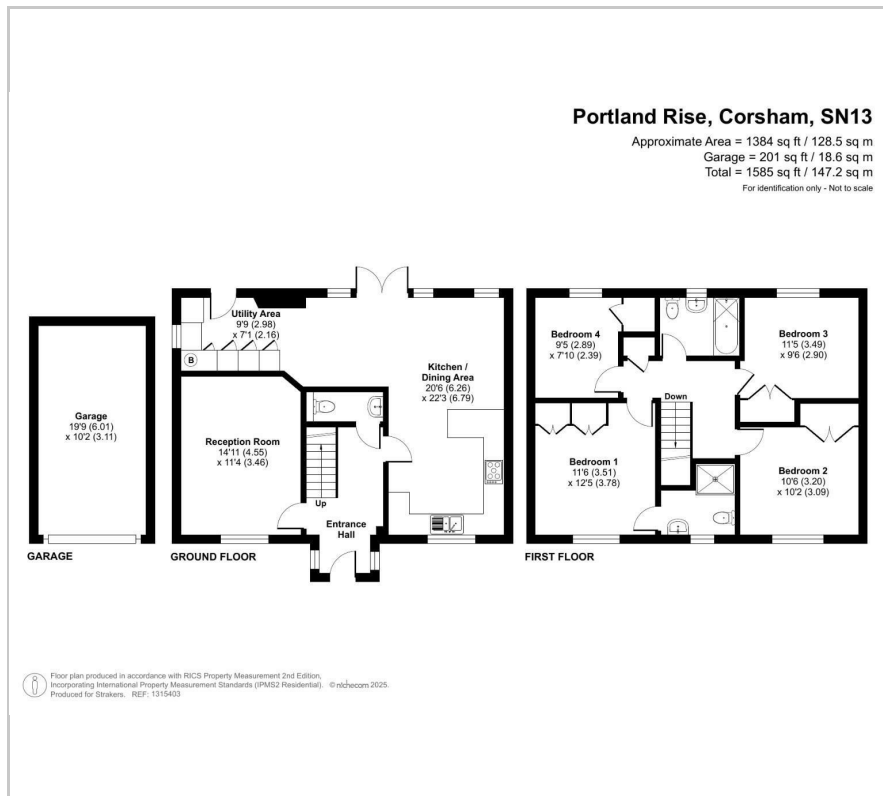
- Four bedroom detached house
- Garage & parking
- Enclosed, south facing rear garden
- Modern feel throughout
- EPC - B (85)
- Council Tax - E (Wiltshire Council)

Viewing

Please contact our Blueleaf Property Office on 01225 839050 if you wish to arrange a viewing appointment for this property or require further information.



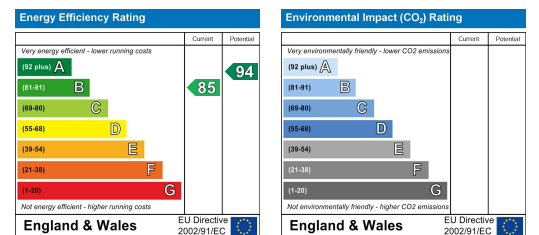
Floor Plan



Area Map



Energy Efficiency Graph



These particulars, whilst believed to be accurate are set out as a general outline only for guidance and do not constitute any part of an offer or contract. Intending purchasers should not rely on them as statements of representation of fact, but must satisfy themselves by inspection or otherwise as to their accuracy. No person in this firm's employment has the authority to make or give any representation or warranty in respect of the property.

Office 4 Stockley Farm, Stockley, Wiltshire, SN11 0NT

Tel: 01225 839050 Email: hello@blueleafproperty.co.uk <https://www.blueleafproperty.co.uk>