



Kingswood Road, SW2

£3,400 Per week

An attractive four bedroom property, split over two floors and finished to a high standard throughout with wooden flooring.

Located just off Brixton Hill with great transport links to the city and all the many restaurants and bars that Brixton Town Centre and Brixton Market has to offer.

Features

- Four Double Bedrooms
- Split-Level
- Spacious Reception Room
- Eat-In Kitchen
- Ideal Location



Kingswood Road, SW2

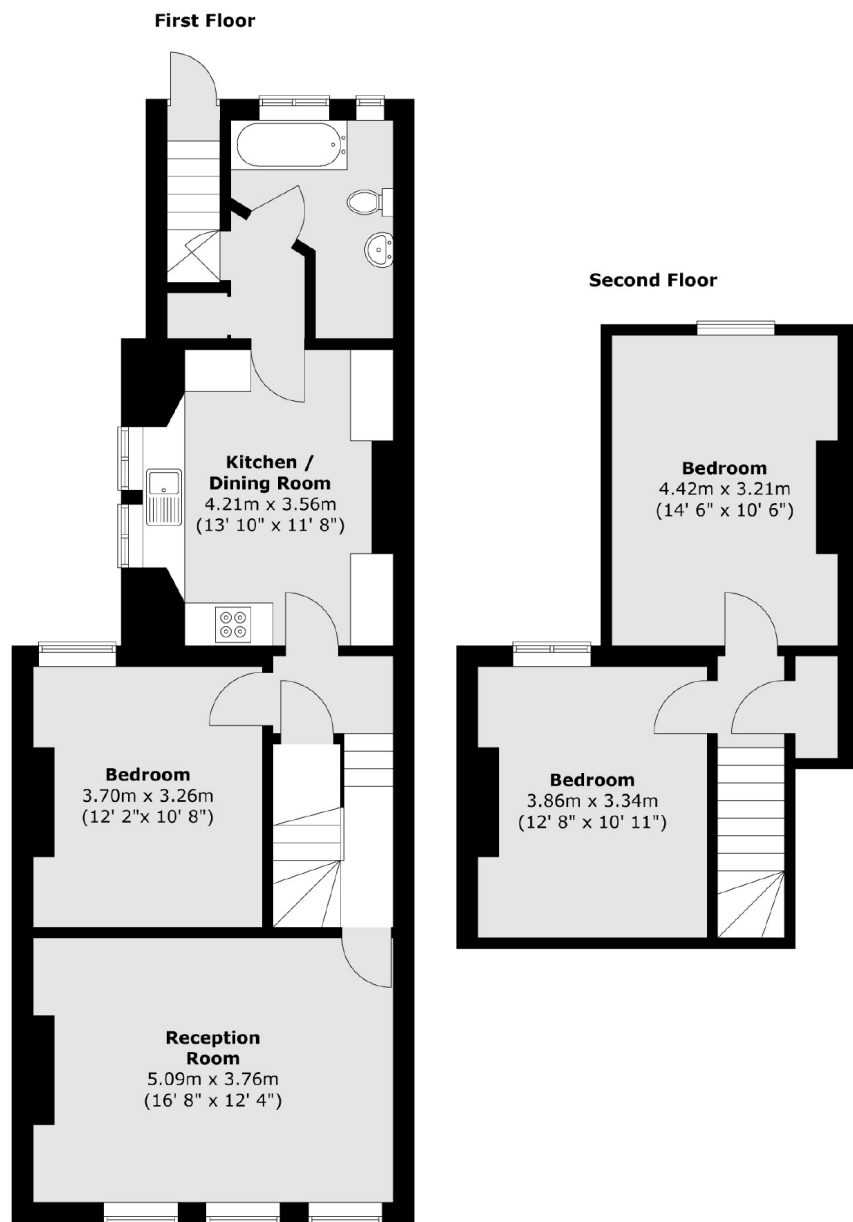
Arranged over two levels, this modern flat offers spacious living.

The first floor comes with a large reception room, a separate eat-in kitchen, one double bedroom and two bathrooms.

The top floor offers a further two double bedrooms and storage space.



Kingswood Road, London, SW2



Total area (approx.) : 95.6 sq. m (1029 sq. ft)