



## Appleford Road, W10

£2,250 Per calendar month

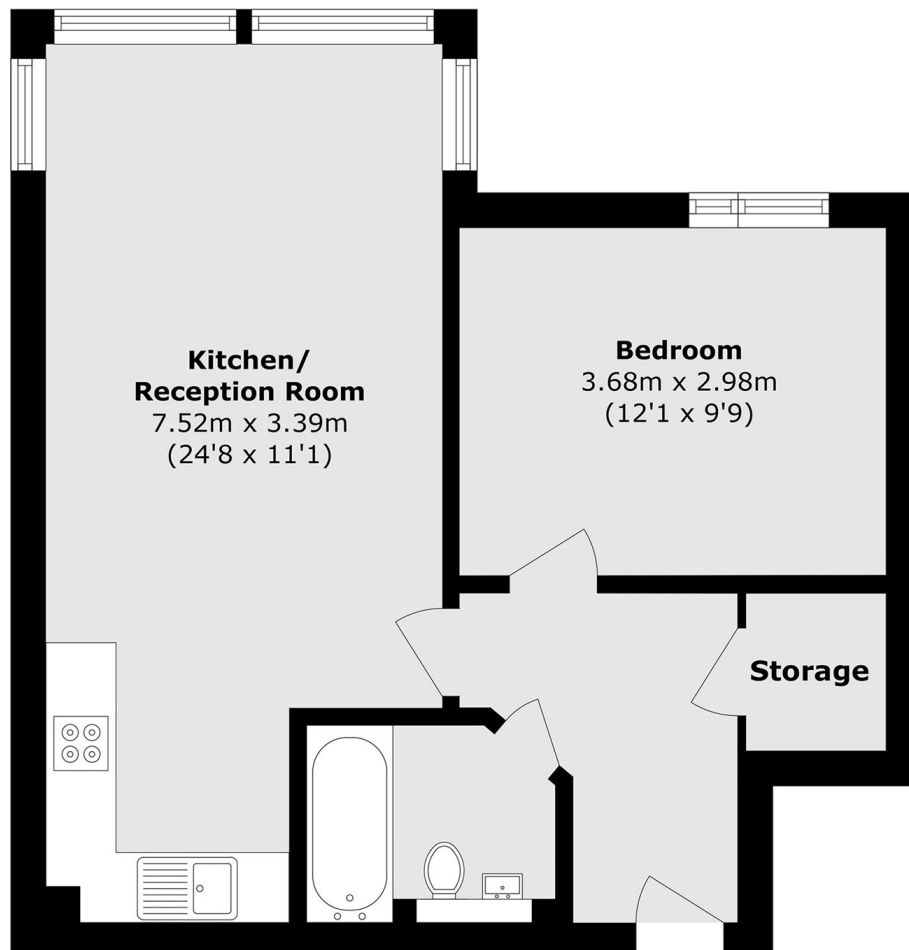
A bright and spacious one bedroom apartment set on the first floor of this impressive development with lift access, featuring wooden flooring throughout and a large open plan kitchen/reception room.

This property is ideally located in North Kensington, offering easy access to Ladbroke Grove Underground station and the local amenities of Portobello Road.

### Features

- One Bedroom
- Open Plan Kitchen
- Wooden Flooring
- First Floor
- Lift Access
- Professionally Managed

# Appleford Road, London, W10



## First Floor

Total area (approx.): 46.2 sq. m (497.2 sq. ft)