



North End Way, NW3

£5,000 PCM

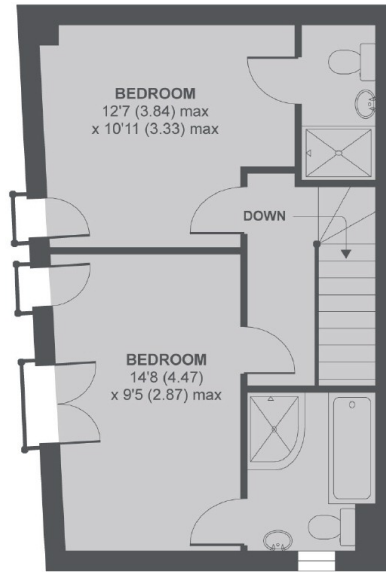
A three bedroom three bathroom house in a popular development. There is a modern eat-in kitchen, bright reception and three double bedrooms with en-suite bathrooms.

Jack Straws Castle is a grade two listed building located at the top of Hampstead next to the Vale of Health, for a Sunday roast head to the Spaniards pub.

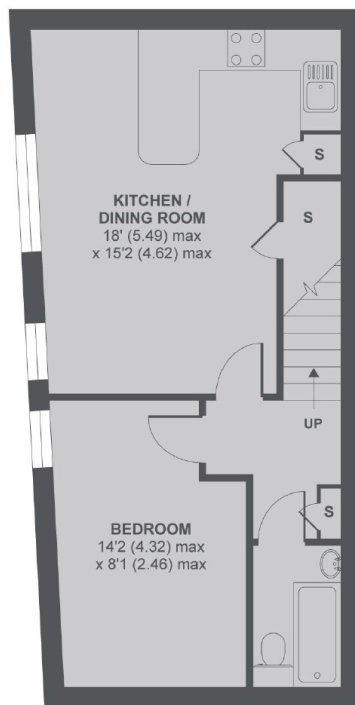
Features

Three Bedrooms
Three Bathrooms
House
Eat-In Kitchen
Wooden Flooring
Great Location

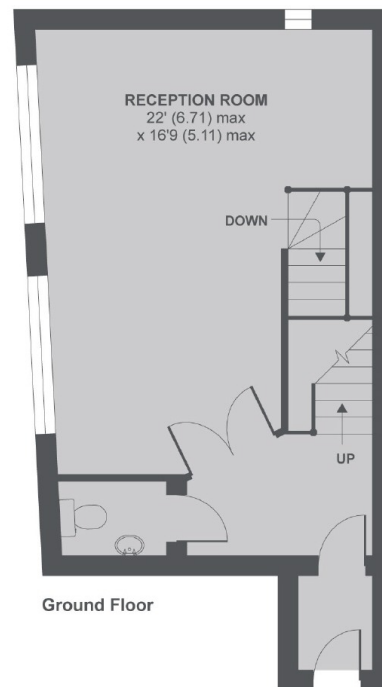
North End Way, London, NW3



1st Floor



Lower Ground Floor



Ground Floor

Jack Straws Castle, North End Way, London, NW3

MAIN HOUSE APPROX FLOOR AREA 1323 SQ.FT 122.9 SQ.M

Copyright nichecom.co.uk 2018 REF : 245294

Dexters

Hampstead
56 Heath Street
London
NW3 1DL
Sales
020 7433 0273

Energy Rating: G. We aim to make our particulars both accurate and reliable. However they are not guaranteed; nor do they form part of an offer or contract. If you require clarification on any points then please contact us, especially if you're traveling some distance to view. Please note that appliances and heating systems have not been tested and therefore no warranties can be given as to their good working order.

 **RICS** | Regulated
Estate Agent
and Letting Agent

dexters.co.uk