



130 Malthouse Lane, Earlswood

Solihull

Offers Over **£1,180,000**

130 Malthouse Lane

Earlswood, Solihull

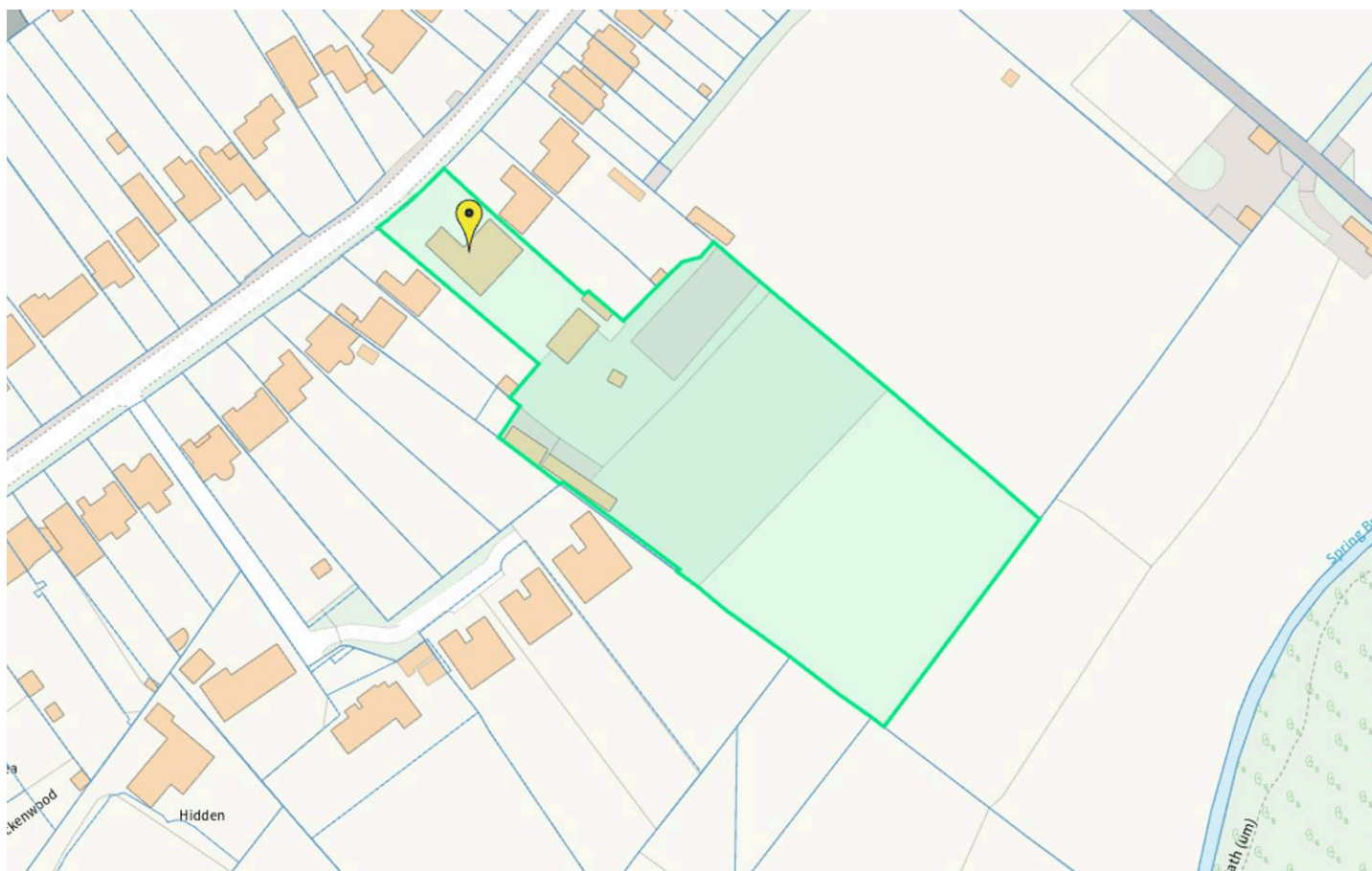
This exceptional detached residence, set on extensive grounds near Earlswood Lakes, offers generous living space, impressive outdoor amenities including a covered swimming pool and two fields. Council Tax band: G

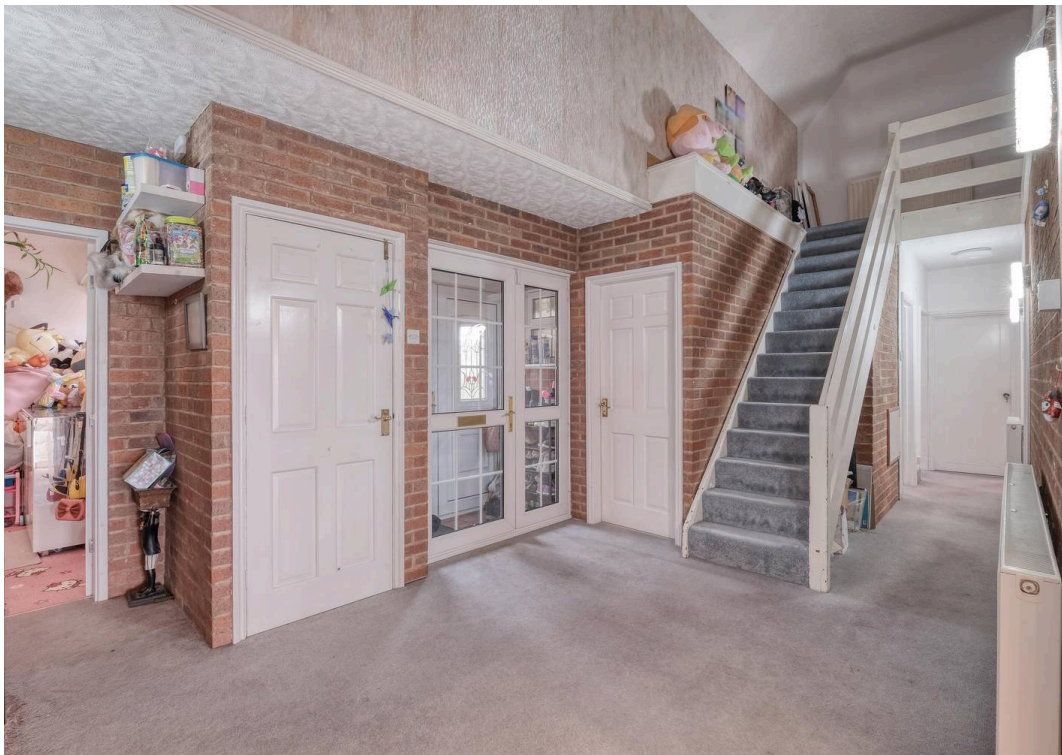
Tenure: Freehold

EPC Energy Efficiency Rating: C

EPC Environmental Impact Rating: D

- Exceptional detached residence set on extensive grounds near Earlswood Lakes
- Two adjoining fields offering 2.84 acres substantial land, privacy, and versatile use
- Expansive open-plan kitchen, dining, and living area ideal for modern family living
- Five double bedrooms, including two with en-suite facilities
- Large rear garden featuring a covered swimming pool and patio areas
- Multiple outbuildings suitable for storage, leisure, or home-office space
- Drive-on/drive-off driveway providing excellent access and ample parking
- Highly desirable semi-rural location
- Excellent transport links and scenic surroundings



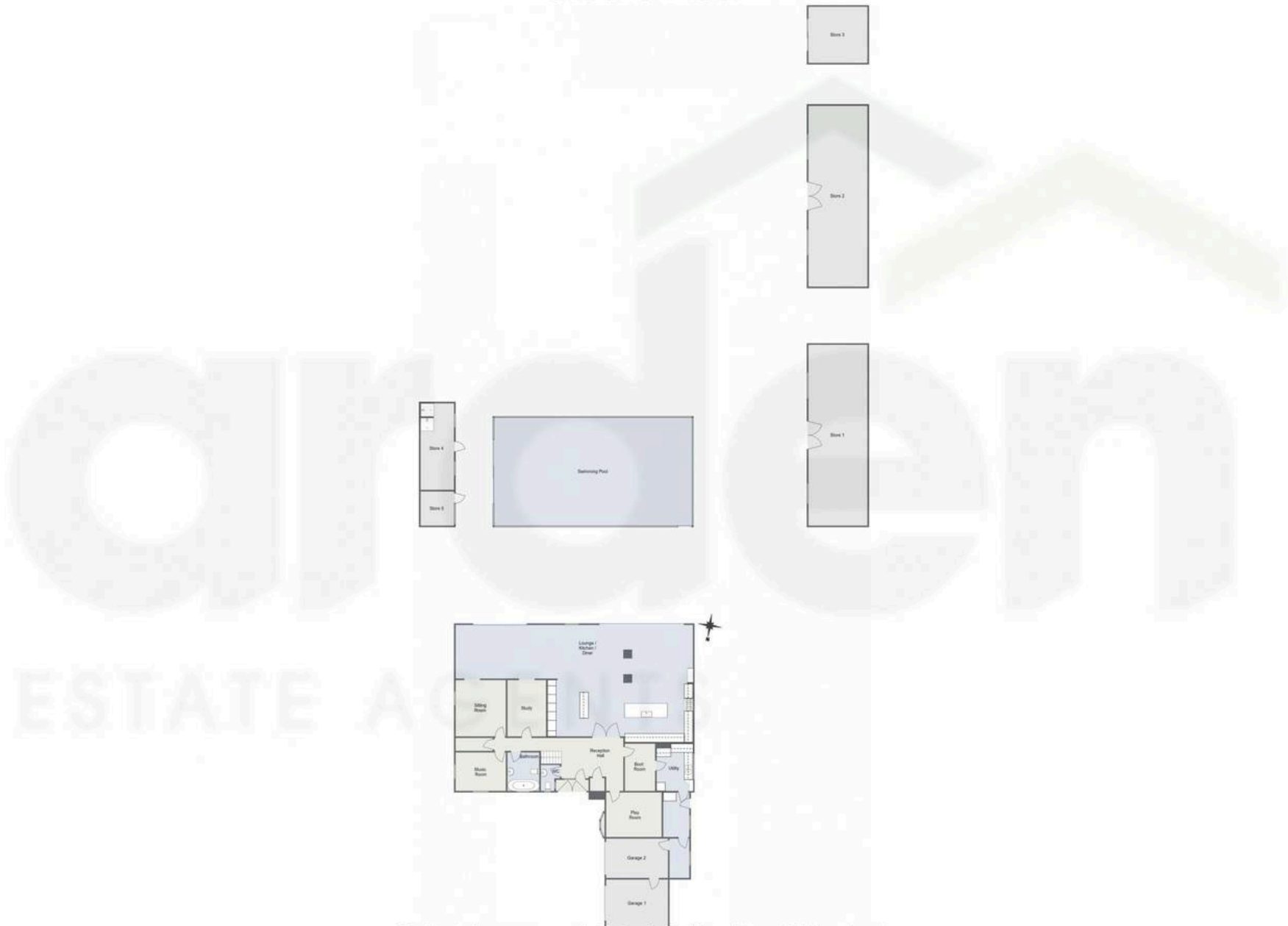


You can include any text here. The text can be modified upon generating your brochure.



Malthouse Lane, Earlswood, Solihull

Ground Floor



For illustrative purposes only. Decorative finishes, fixtures & fittings do not represent the current state of the property. Measurements are approximate & not to scale. Floor Plans made using RoomSketcher.



Arden Estates

Arden Estates Solihull, 450 Stratford Road, Solihull – B90 4AQ

0121 745 5888 • solihull@ardenestates.co.uk •