



Jubilee Court, 8 Wood Wharf, Greenwich, SE10 9FL



Jubilee Court, 8 Wood Wharf, SE10

Leasehold (982 years remaining)

Contemporary one-bedroom apartment in the New Capital Quay development, featuring 24-hour concierge and on-site Waitrose. Perfectly positioned in the heart of historic Greenwich with excellent transport connections to Canary Wharf and central London.

Key Features

- New Capital Quay development
- Greenwich riverside location
- Secure residential building
- Council Tax: **B**
- Service Charge: **£3,223.50**
- Ground Rent: **£350**
- Excellent transport links
- EPC: **B**

Situated in the heart of Greenwich, this contemporary one-bedroom apartment forms part of the New Capital Quay development, offering modern riverside living with exceptional convenience. The property benefits from the developments 24-hour concierge service, providing residents with convenience and peace of mind around the clock.

The apartment itself offers well-proportioned living spaces designed to maximise both comfort and functionality. Natural light flows throughout the property, creating a bright and welcoming atmosphere perfect for modern living. The stunning fitted kitchen provides an excellent space for cooking and entertaining, while the stylish bathroom suite offers a relaxing retreat. Built-in storage solutions throughout the apartment ensure efficient use of space, making this an ideal home.

Transport connections are excellent, with Cutty Sark DLR station and Greenwich railway station providing swift access to Canary Wharf, London Bridge, and central London, while the Thames Clipper river services provide a scenic commute option.



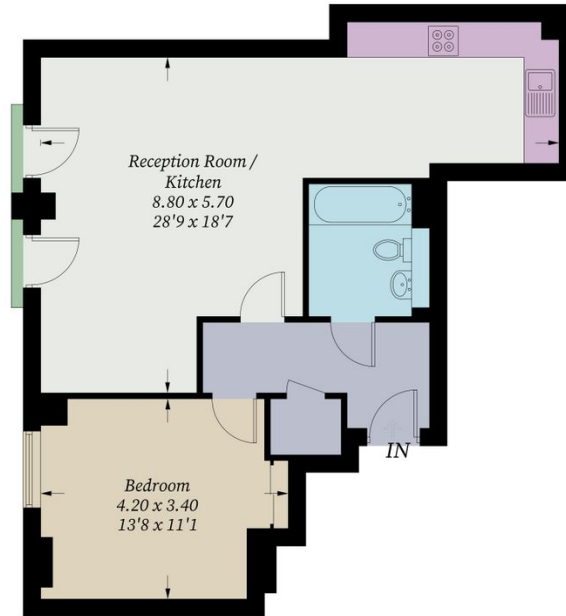






Jubilee Court

Approximate Gross Internal Area = 57.9 sq m / 623 sq ft



Fifth Floor

Illustration for identification purposes only, measurements are approximate, not to scale. Fourlabs.co © (ID1235707)