



## White Cross Bay Holiday Park & Marina, Ambleside Road, Windermere, LA23 1LF

- Three Bedroom Holiday Lodge
- Two Bathrooms - Newly Fitted In 2025
- On Edge of Lake With Stunning Views
- Parking For Two Cars and Outside Storage
- Established Rental Income - Fully Booked All Year Round
- Fully Refurbished In 2024
- Large Decking Area with Hot Tub
- Not Overlooked Location On Site
  - Premium Pitch On Site
- Viewing Essential to Fully Appreciate

**01772 633399**

**info@tempoleisure.co.uk**

**www.tempoleisure.co.uk**

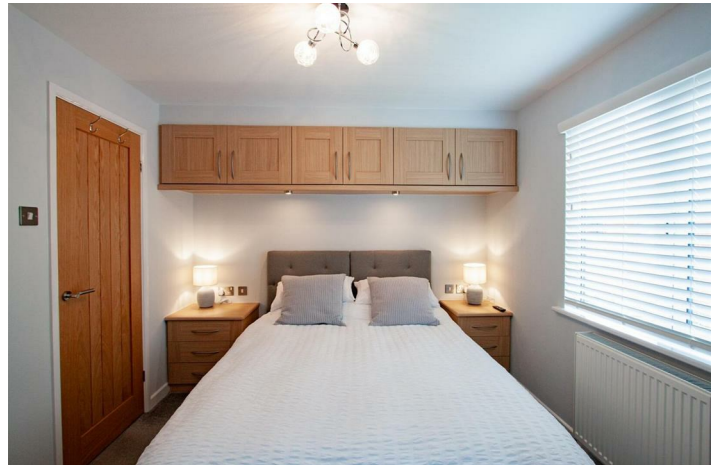
Contact Annette & Team Tempo **NOW**

Potters Lodge offers an exceptional retreat on White Cross Bay with breath-taking views of the lake right at your doorstep. This fabulous holiday home is designed to provide a luxurious and comfortable stay, making it an ideal choice for families, couples, or friends seeking a memorable getaway in the heart of the Lake District. The lodge boasts three well-appointed bedrooms, accommodating up to six guests. Two of the bedrooms feature king-size beds, while the third offers a cosy double bed, ensuring a restful night's sleep for all. The living area is tastefully furnished and equipped with modern amenities, creating a welcoming space for relaxation and socialising. The super-equipped kitchen allows for effortless meal preparation, making it easy to enjoy home-cooked meals during your stay.

One of the standout features of Potters Lodge is the spacious outdoor terrace, which is furnished to a high standard, perfect for alfresco dining or simply soaking in the stunning surroundings. To elevate your experience further, a luxurious hot tub awaits, providing the perfect spot to unwind after a day of exploring the beautiful Lake District.

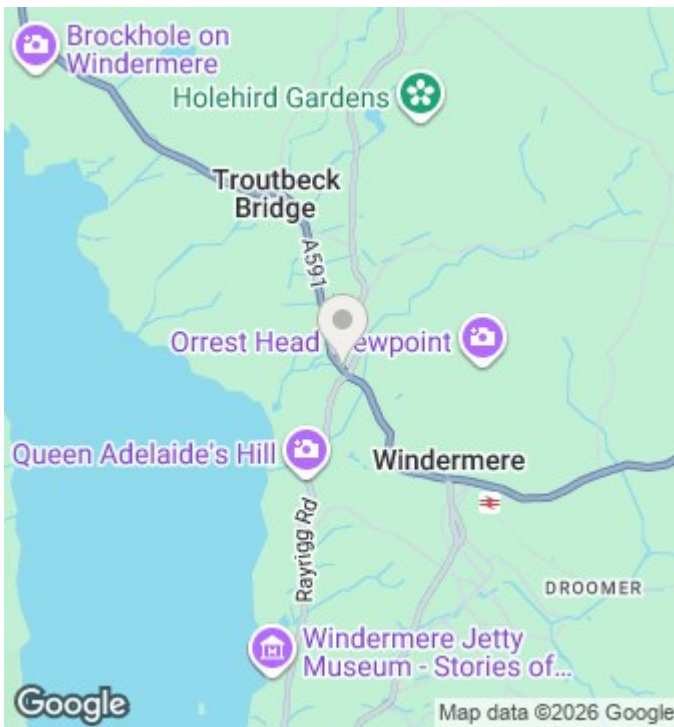
In summary, Potters Lodge is not just a place to stay; it is a delightful holiday home that combines comfort, style, and stunning natural beauty. Whether you are looking to create lasting memories with loved ones or simply escape the hustle and bustle of everyday life, this lodge is the perfect sanctuary. Don't miss the opportunity to make this fabulous retreat your own.





## Viewings

Viewings by arrangement only. Call 01772 633399 to make an appointment.



## Notice

Please note we have not tested any apparatus, fixtures, fitting or services. Interested parties must undertake their own investigation into the working order of these items. All measurements stated in this brochure are approximate and photographs provided are for guidance only. We are advised that the property is subject to site fees.

### Terms & Conditions Misrepresentation Act 1967:-

tempoleisure.co.uk looks to ensure that all our sales particulars are accurate and reliable, we believe the above details to be correct but their accuracy cannot be guaranteed and they do not constitute any part of an offer or contract. Any intending purchasers or lessees must satisfy themselves by inspection or otherwise as to the correctness of each statement in these particulars before entering into any formal contract to purchase this property.

### Arrange A Viewing

If you are interested in viewing a property through tempoleisure.co.uk please call our team on 01772 633399 or email [info@tempoleisure.co.uk](mailto:info@tempoleisure.co.uk)

### Property Listing

If you are thinking of selling your property tempoleisure.co.uk will be more than happy to help, please call our team on 01772 633399 or email [info@tempoleisure.co.uk](mailto:info@tempoleisure.co.uk)

Contact Annette & Team Tempo ***NOW***

**01772 633399**  
**[info@tempoleisure.co.uk](mailto:info@tempoleisure.co.uk)**  
**[www.tempoleisure.co.uk](http://www.tempoleisure.co.uk)**