



Mentmore Terrace, E8

£1,050,000

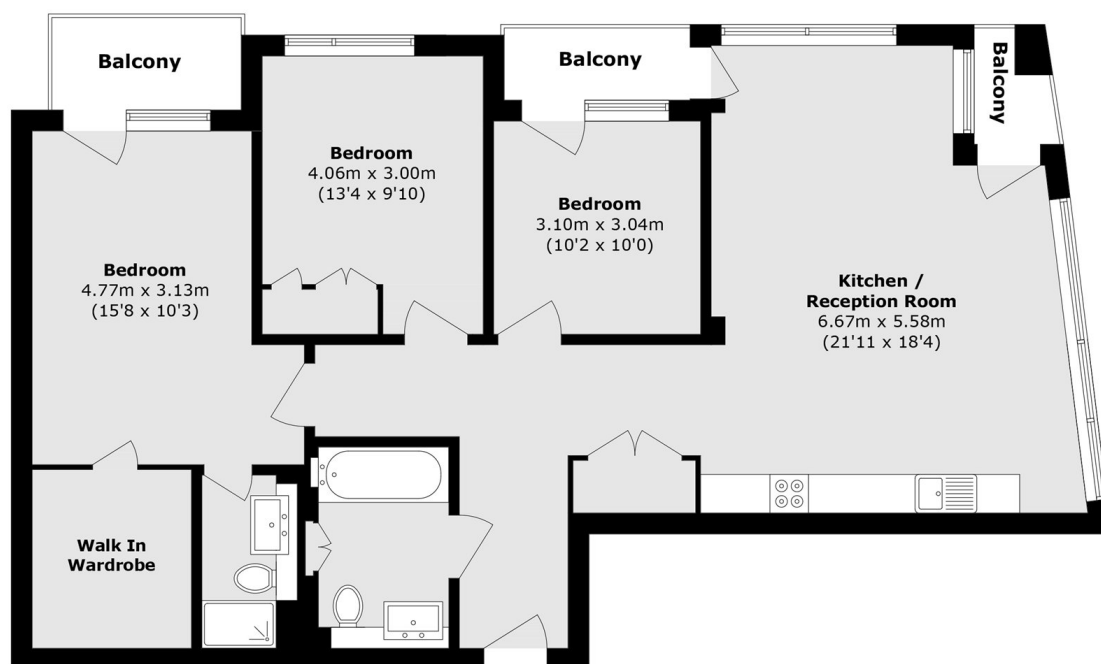
A three double-bedroom modern apartment moments from London Fields measuring in excess of 1,101sqft. The property features a large open plan living and kitchen area with private balcony and dining area. There are three double bedrooms, two of which are complete with a private balcony and the principle bedroom comes with an en-suite and walk in wardrobe. The property also benefits from engineered wooden flooring throughout, a concierge and communal rooftop with city views.

Mentmore Terrace is perfectly located next to London Fields overground station, London Fields green and around the corner from Broadway Market with endless independent bars, restaurants and cafés.

Features

- Three Double Bedrooms
- Two Bathrooms
- 1100 Square feet
- Concierge
- Three Balconies
- Engineered wooden Flooring

Mentmore Terrace, London, E8



Total area (approx.): 102.3 sq. m (1101.5 sq. ft)
Balcony area (approx.): 9.2 sq. m (99.0 sq. ft)