



HURST STREET, B5

£270,000

Offered with vacant possession this two bedroom, two bathroom apartment is located on the 2nd floor of West Timber Yard. Finished to a high standard throughout the apartment offers over 750 square foot of internal living space and includes one allocated car parking space.

- Chain Free
- Underground Parking
- 24/7 Concierge
- Resident Gym
- Over 750 sq ft
- EPC: C



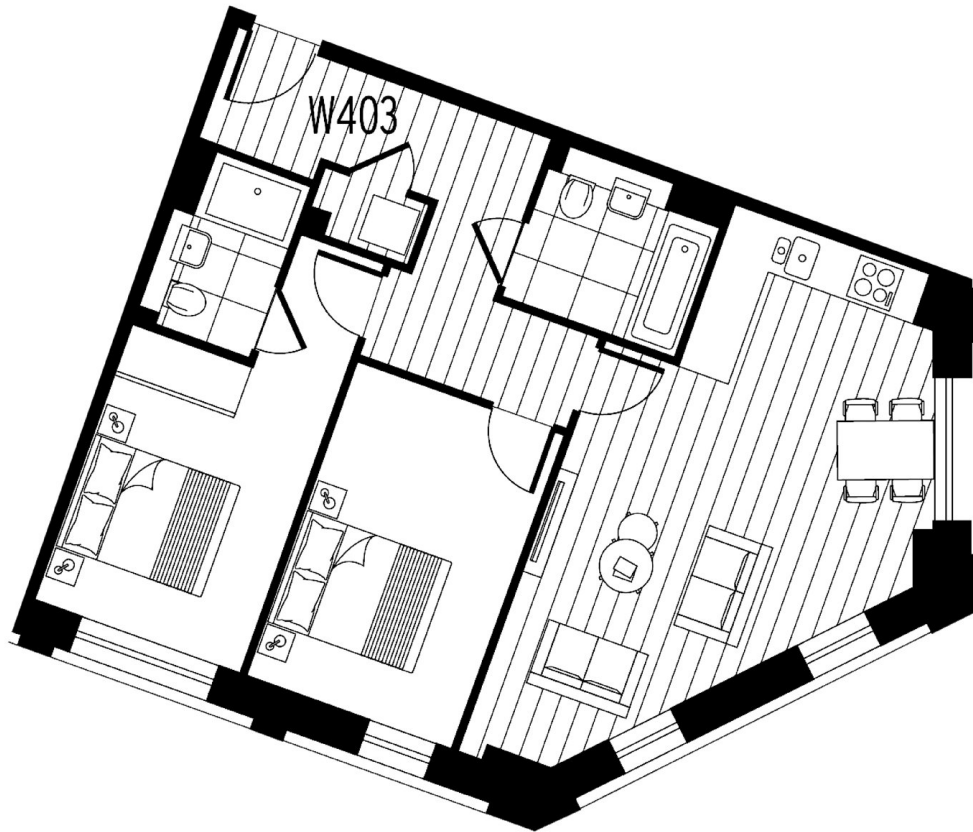
ABOUT THE HOME

Timber Yard is in close proximity to the city centre including great transport links at New Street Station and Moor Street Train Station. The development is also located near shops and restaurants at The Bullring (0.3 miles) and Grand Central (0.5 miles).





2 bedroom apartment



Approximate gross internal area: 766 sq ft / 71.1 sq m

Whilst every attempt has been made to ensure the accuracy of the floorplan contained here, measurements of doors, windows, rooms and any other items are approximate. No responsibility is taken for any error, omission, or mis-statement. This plan is for illustrative purposes only and should be used as such by any prospective purchaser. The services, systems and appliances shown have not been tested and no guarantee as to their operability or efficiency can be given.
© Copyright LIFE Residential 2021.

LIFE RESIDENTIAL

11 Flagstaff House, London,
SW8 2LZ
Sales: 020 7476 1408
Lettings: 020 7582 7989

Energy Rating: C. We aim to make our particulars both accurate and reliable. However they are not guaranteed; nor do they form part of an offer or contract. If you require clarification on any points then please contact us, especially if you're traveling some distance to view. Please note that appliances and heating systems have not been tested and therefore no warranties can be given as to their good working order.