



estate agents



## Flat 1 373B Archway Road

, London, N6 4EJ

We offer for sale this two double bedroom first floor flat ideally located within minutes of Highgate Station N6. Situated above shops, the property features an open-plan reception and kitchen, a modern bathroom, and a private balcony. The flat is presented in good decorative order throughout. Highgate Woods, Highgate Village are close by whilst a range of cafes and restaurants are on the doorstep. The property is offered chain-free and benefits from a 120 year lease.

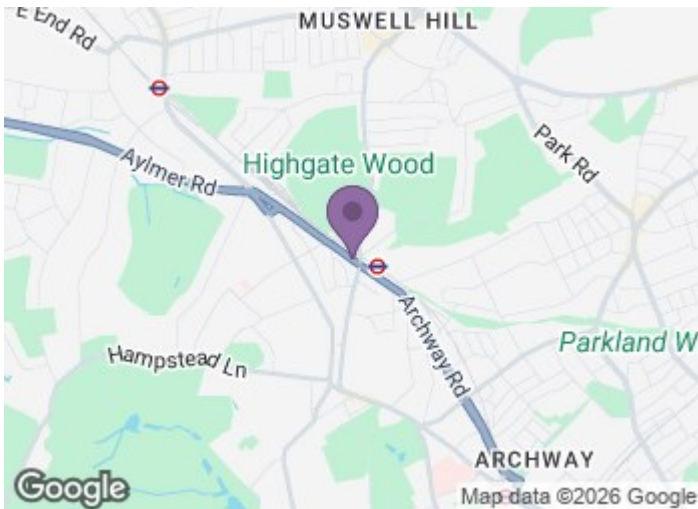
£400,000

# Flat 1 373B Archway Road

, London, N6 4EJ



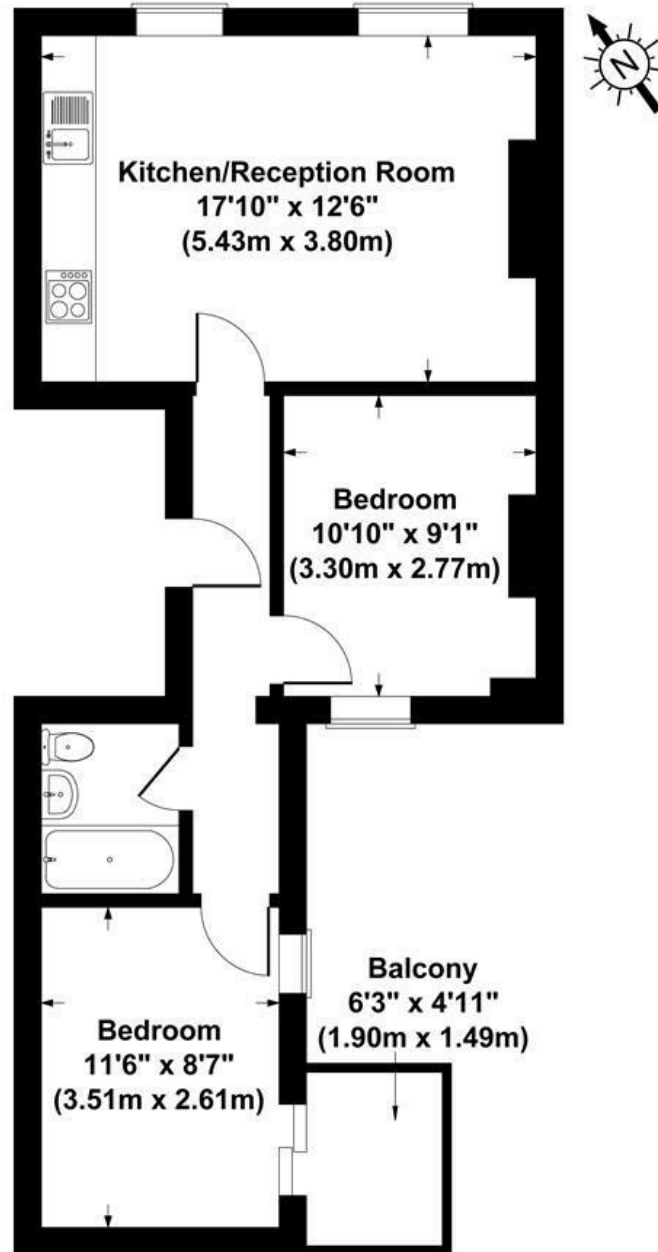
- Two Double Bedrooms
- Modern Bathroom
- Chain Free
- Open Plan Reception
- Balcony
- 120 Lease
- Modern Kitchen
- Double Glazing



[Directions](#)



## Floor Plan



First Floor

Archway Road, London, N6

Gross Internal Area 517 sq ft / 48 sq metres

Not to Scale. Produced by The Plan Portal 2026

For Illustrative Purposes Only.

These particulars, whilst believed to be accurate are set out as a general outline only for guidance and do not constitute any part of an offer or contract. Intending purchasers should not rely on them as statements of representation of fact, but must satisfy themselves by inspection or otherwise as to their accuracy. No person in this firm's employment has the authority to make or give any representation or warranty in respect of the property.

129 High Road, East Finchley, London, N2 8AJ  
Tel: 0208 883 2200 Email: sales@haven-estateagents.com

| Energy Efficiency Rating                    |  | Current                 | Potential |
|---|--|-------------------------|-----------|
| Very energy efficient - lower running costs |  |                         |           |
| (92 plus) <b>A</b>                          |  |                         |           |
| (81-91) <b>B</b>                            |  |                         |           |
| (69-80) <b>C</b>                            |  |                         |           |
| (55-68) <b>D</b>                            |  | 68                      | 73        |
| (39-54) <b>E</b>                            |  |                         |           |
| (21-38) <b>F</b>                            |  |                         |           |
| (1-20) <b>G</b>                             |  |                         |           |
| Not energy efficient - higher running costs |  |                         |           |
| <b>England &amp; Wales</b>                  |  | EU Directive 2002/91/EC |           |