



Leamouth Road, E14

£484 Per week

A bright one bedroom apartment on the high floor of this dockside development. This modern apartment has ample storage, a large balcony and river views.

Located moments from the shops, bars and restaurants of Canning Town & Canary Wharf. On-site facilities include a communal rooftop terrace and concierge service.

Features

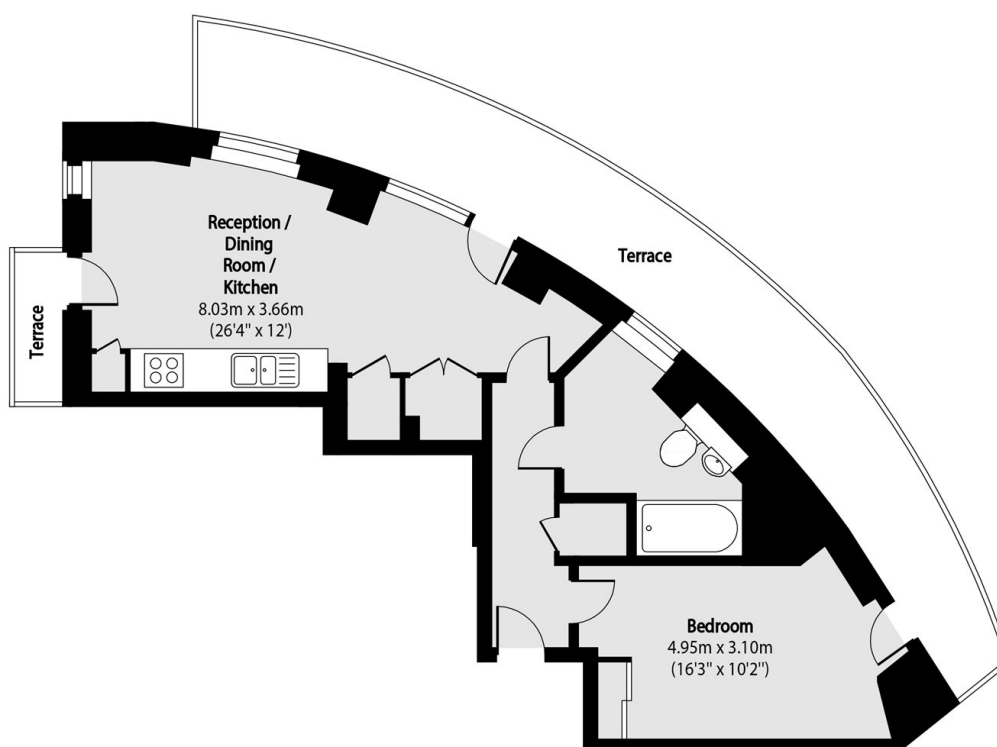
- High Floor Position
- One Bedroom
- Tastefully Furnished
- Private Balconies
- Concierge Service
- Communal Gardens



Leamouth Road, E14



Leamouth Road, London, E14



Total area (approx): 51.56 sq m (555 sq. ft)

Terrace total area (approx): 27.68 sq m (298 sq. ft)

Dexters

Canary Wharf East
39 Westferry Road
London
E14 8JH
Lettings
020 7590 9550

Energy Rating: B. We aim to make our particulars both accurate and reliable. However they are not guaranteed; nor do they form part of an offer or contract. If you require clarification on any points then please contact us, especially if you're traveling some distance to view. Please note that appliances and heating systems have not been tested and therefore no warranties can be given as to their good working order.

 **RICS** | Regulated
Estate Agent
and Letting Agent

[dexters.co.uk](https://www.dexters.co.uk)