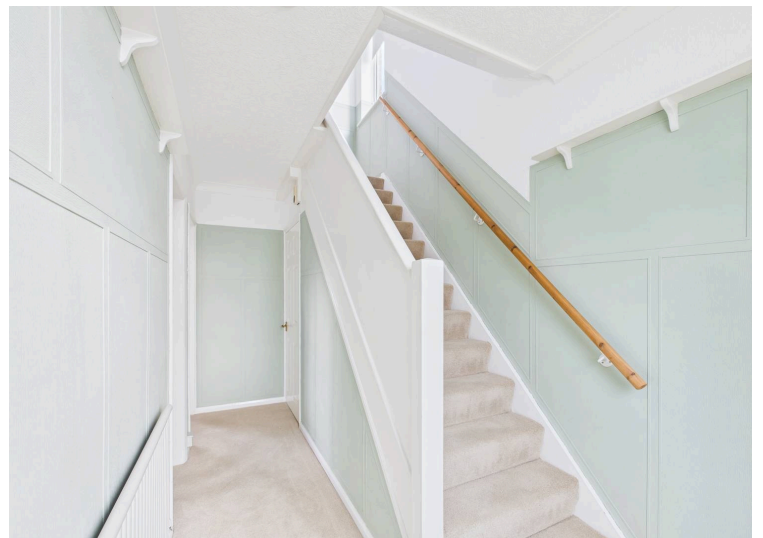
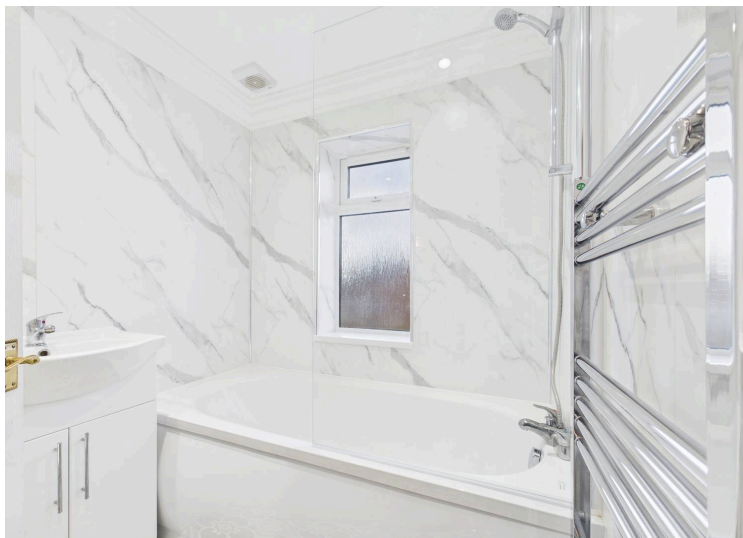
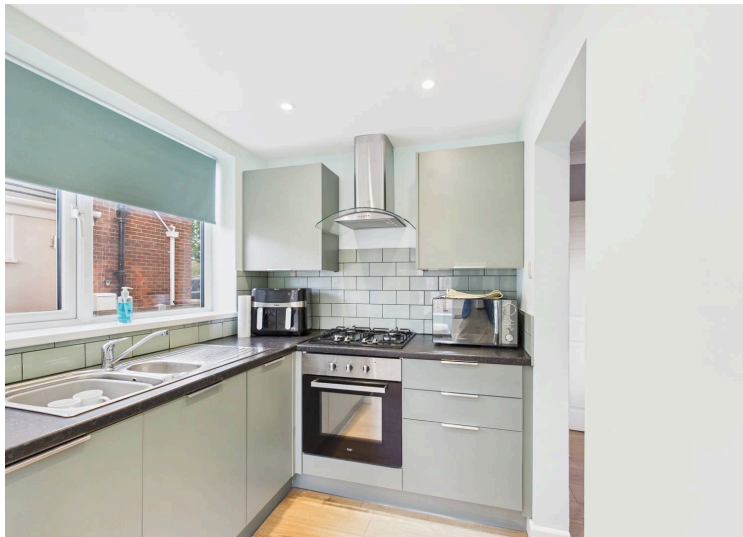


Stanley Road, Scunthorpe - DN15 8AR

£162,500

Semi Detached • Three Bedrooms • Two Reception Rooms • New Kitchen, Utility & Bathroom • New Boiler • Sought After Location • Recently Refurbished • Freehold • Council Tax Band "B" • EPC Rating "E"





Ezmuve is delighted to present to market this beautifully refurbished three-bedroom semi-detached home, ideally located in the Berkeley area of Scunthorpe which is a popular residential area. Recently modernised throughout, this attractive property is perfectly suited to a range of buyers, including families, professionals, and those looking for a move-in-ready home with generous outdoor space and stylish interiors.

The home showcases a recently installed kitchen, utility area, and modern bathroom—all finished to a high standard with a contemporary touch. The ground floor layout offers excellent versatility, featuring two spacious reception rooms ideal for both everyday living and entertaining guests. The kitchen is well-appointed with modern fittings and flows seamlessly into a separate utility area, offering additional space and practicality.

A useful understairs storage area presents an exciting opportunity to convert into a ground floor WC, adding further value and convenience to the property.

Upstairs, the first floor is home to three well-proportioned bedrooms, all beautifully presented. The master bedroom benefits from fitted wardrobes, providing ample storage, while the recently installed family bathroom features contemporary fixtures and a fresh, modern design.

Externally, the home continues to impress. To the front, a low-maintenance garden and a private driveway offer off-road parking for multiple vehicles, along with access to a detached garage. To the rear, the generous garden is both functional and inviting, featuring a lawned area, patio space for outdoor dining, and a range of useful additions including a timber summer house, workshop, and greenhouse. Recently updated boundary fencing offers privacy and security, making the garden ideal for families and entertaining alike.

Located in a well-established and desirable part of Scunthorpe, the property benefits from excellent local amenities, schools, parks, and easy access to transport links.

Properties of this standard in such a prime location rarely remain on the market for long. Early viewing is highly recommended to fully appreciate the quality, potential, and lifestyle this superb home has to offer.

AGENT NOTES

1.MONEY LAUNDERING REGULATIONS: Intending purchasers will be asked to produce identification documentation at

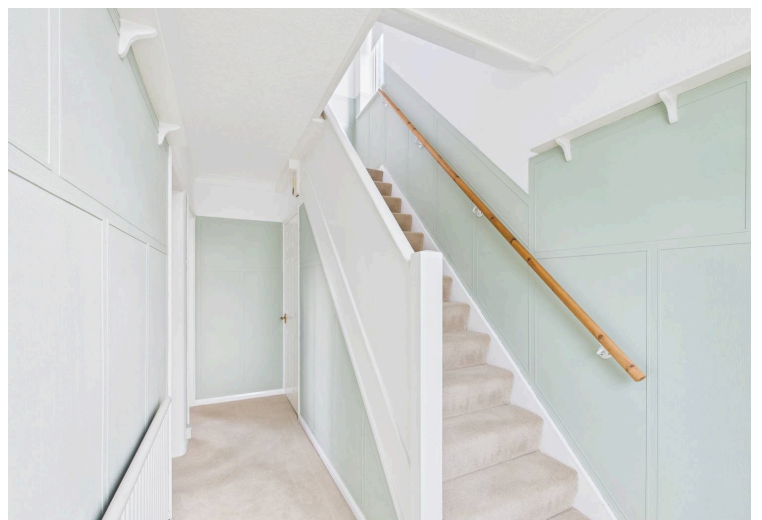
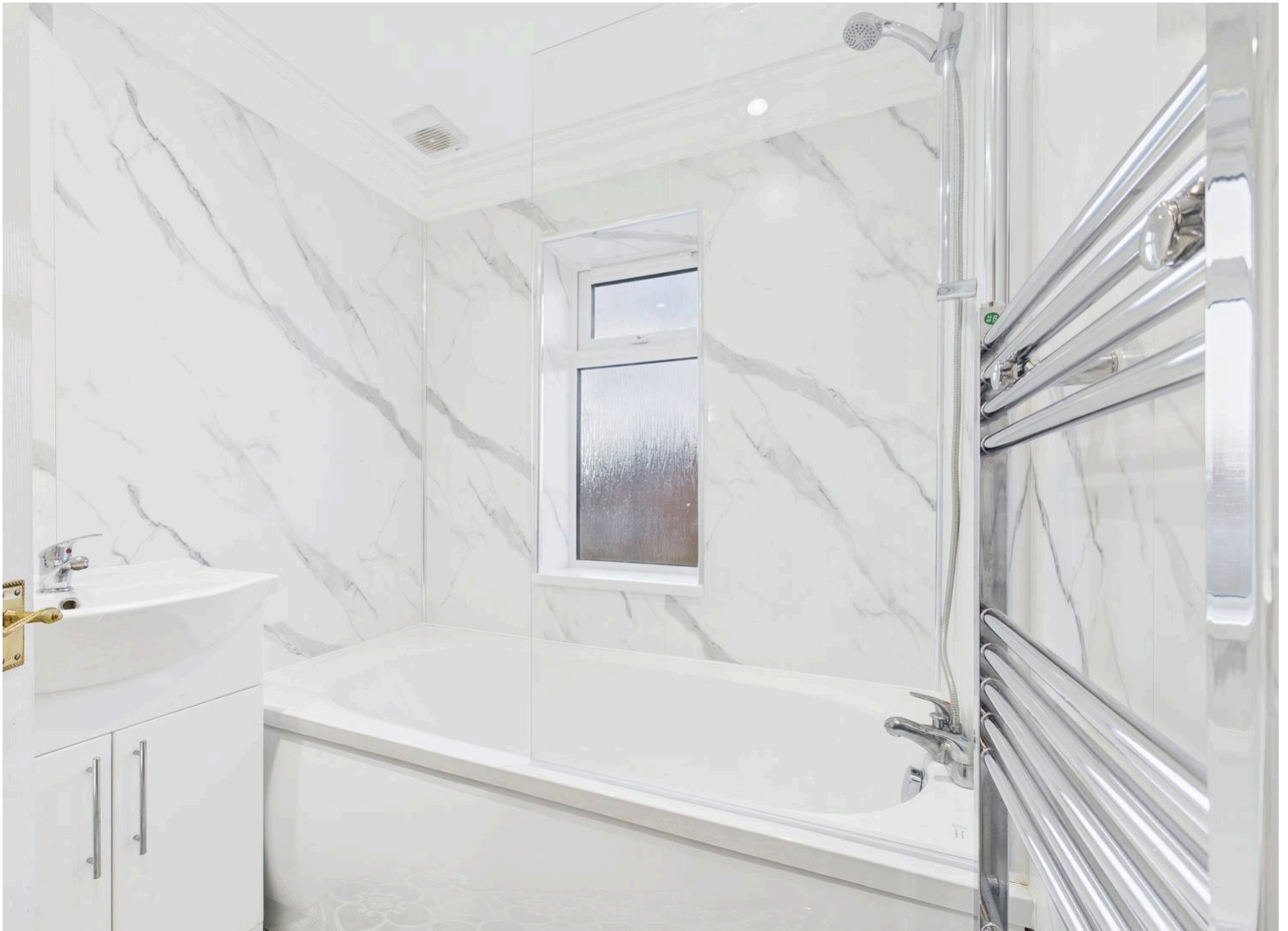


Council Tax band: B

Tenure: Freehold

EPC Energy Efficiency Rating: E

EPC Environmental Impact Rating: E





You can include any text here. The text can be modified upon generating your brochure.



ezmuve
estate agents

ezmuve

