



Briarfield Drive, Leicester LE5 1RG

welcome to

Briarfield Drive, Leicester

A three-bedroom semi-detached on a corner plot. The property offers living and dining spaces, a kitchen, and three bedrooms with a bathroom. Requiring modernisation throughout, it presents excellent potential for improvement and extension (STPP), with a large front garden and a rear garden.

Entrance Hall

Door to the front and radiator.

Lounge

Double glazed window to the front, electric fire and carpeted.

Dining Room

Double glazed window to the rear and radiator.

Kitchen

Fitted kitchen comprising of wall and base units with work surfaces over, sink drainer unit, tiled flooring and space for appliances. Double glazed window to the rear and door to the rear.

Lean To

First Floor Landing

Loft access.

Bedroom One

Double glazed window to the front, radiator and carpeted.

Bedroom Two

Double glazed window to the rear, radiator and carpeted.

Bedroom Three

Double glazed window to the front, radiator and carpeted.

Bathroom

Double glazed window to the rear, bath with shower over, WC, hand wash basin and radiator.

Front & Rear Of Property

To the front and side of the property is a garden laid to lawn. To the rear of the property is a garden with a paved patio area and a lawned area bordered by mature shrubs and roses.

Agents Note

The property is of concrete construction. Please speak with your conveyancer





view this property online williamhbrown.co.uk/Property/LHS120819



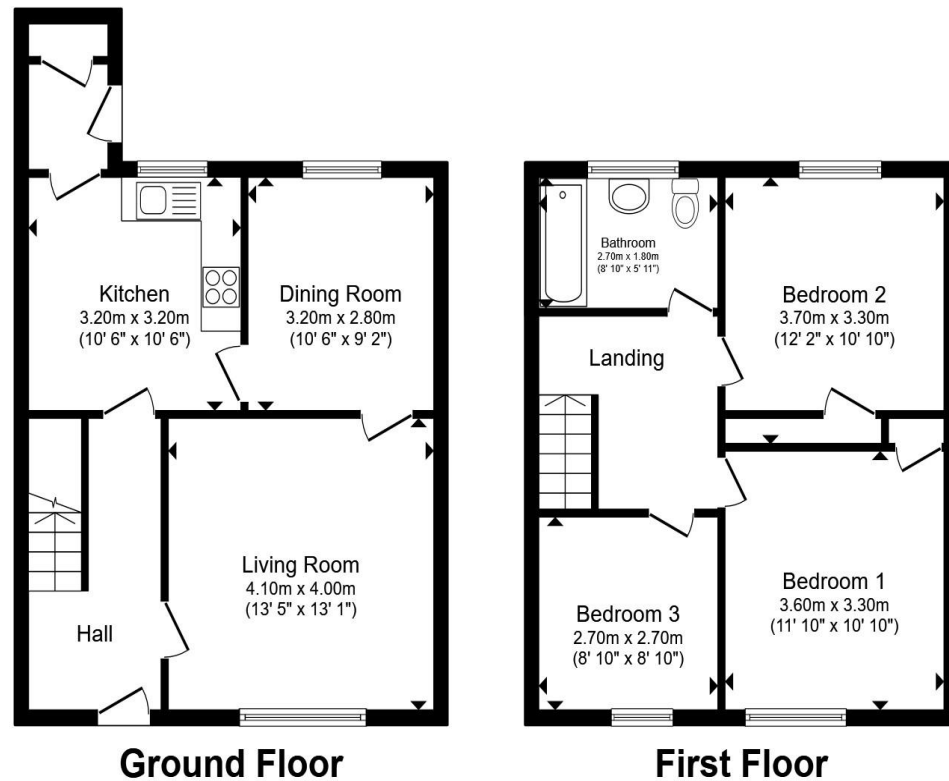
welcome to

Briarfield Drive, Leicester

- Three bedroom semi-detached
- Corner plot
- Popular Netherhall
- Living & dining space
- Rear garden with storage

Tenure: Freehold EPC Rating: C
Council Tax Band: A

offers over
£240,000



Total floor area 91.6 m² (986 sq.ft.) approx

This floor plan is for illustrative purposes only. It is not drawn to scale. Any measurements, floor areas (including any total floor area), openings and orientation are approximate. No details are guaranteed, they cannot be relied upon for any purpose and they do not form part of any agreement. No liability is taken for any error, omission or misstatement. A party must rely upon its own inspection(s). Powered by www.propertybox.io



view this property online williamhbrown.co.uk/Property/LHS120819



Property Ref:
LHS120819 - 0005

1. MONEY LAUNDERING REGULATIONS Intending purchasers will be asked to produce identification documentation at a later stage and we would ask for your co-operation in order that there is no delay in agreeing the sale. 2. These particulars do not constitute part or all of an offer or contract. 3. The measurements indicated are supplied for guidance only and as such must be considered incorrect. Potential buyers are advised to recheck measurements before committing to any expense. 4. We have not tested any apparatus, equipment, fixtures or services and it is in the buyers interest to check the working condition of any appliances. 5. Where an EPC, or a Home Report (Scotland only) is held for this property, it is available for inspection at the branch by appointment. If you require a printed version of a Home Report, you will need to pay a reasonable production charge reflecting printing and other costs. 6. We are not able to offer an opinion either written or verbal on the content of these reports and this must be obtained from your legal representative. 7. Whilst we take care in preparing these reports, a buyer should ensure that his/her legal representative confirms as soon as possible all matters relating to title including the extent and boundaries of the property and other important matters before exchange of contracts.

William H Brown is a trading name of Sequence (UK) Limited which is registered in England and Wales under company number 4268443, Registered Office is Cumbria House, 16-20 Hockliffe Street, Leighton Buzzard, Bedfordshire, LU7 1GN. VAT Registration Number is 500 2481 05.


william h brown



0116 251 4131



Leicester@williamhbrown.co.uk



16-18 Halford Street, LEICESTER, Leicestershire,
LE1 1JB



williamhbrown.co.uk