



HUNTERS[®]
HERE TO GET *you* THERE



2



|



|



D

Chatsworth Road, Mapesbury Conservation, London, NW2 Asking Price £550,000



A superb two bedroom second floor apartment set within an semi-detached period residence, spanning over 800 sq ft of living space, with access to a large communal garden. The property has been fully refurbished, including new carpets and repainting throughout.

The apartment offers two double bedrooms fitted with ample storage, a full bathroom, a reception room featuring a period fireplace with space for dining, and a separate kitchen.

The property is sold chain-free with a share of the freehold.

Chatsworth Road is set within the Mapesbury Conservation area, ideally located for the Jubilee line at Kilburn station or the London Overground at Brondesbury Park. The property is also in the area of Malorees School catchment which is one of the best around for infants and juniors.

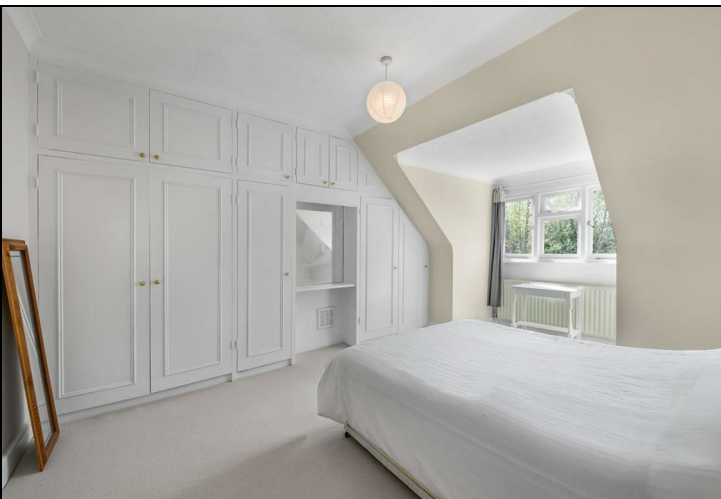
223 West End Lane, West Hampstead, London, NW6 1XJ | 0207 431 4777
westhampsteadsales@hunters.com | www.hunters.com



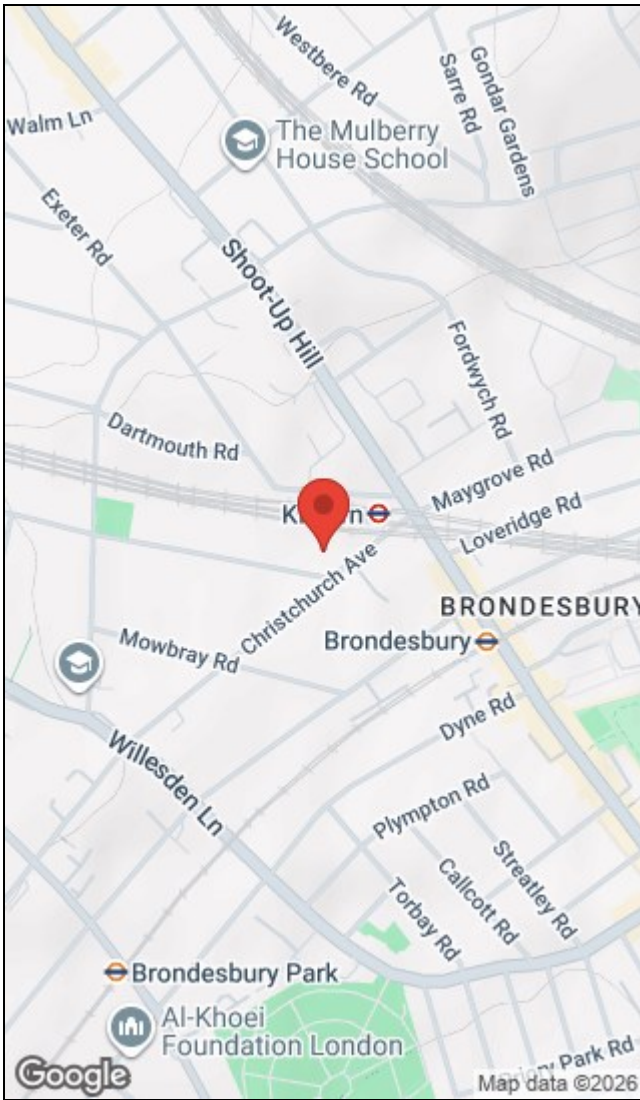
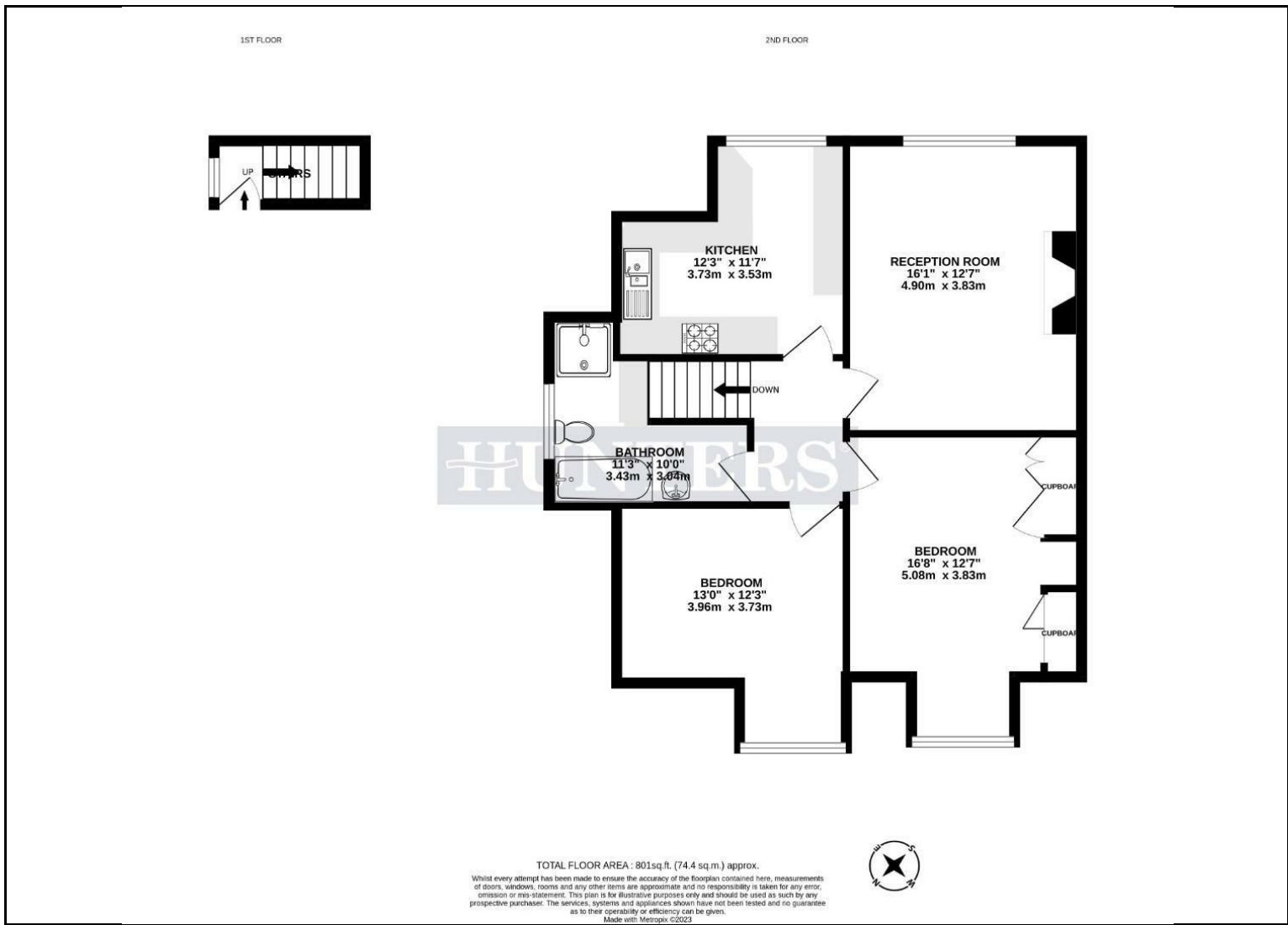


KEY FEATURES

- Two Large Double Bedrooms
- Top Floor Conversion
- Good Transport Links
 - Built in Storage
 - Share of Freehold
 - Sold Chain Free







Energy Efficiency Rating		Environmental Impact (CO ₂) Rating	
Current	Potential	Current	Potential
Very energy efficient - lower running costs			
Very environmentally friendly - lower CO ₂ emissions			
57 58		49 49	
Not energy efficient - higher running costs		Not environmentally friendly - higher CO ₂ emissions	
England & Wales EU Directive 2002/91/EC		England & Wales EU Directive 2002/91/EC	

223 West End Lane, West Hampstead, London, NW6 1XJ | 0207 431 4777
westhampsteadsales@hunters.com | www.hunters.com



This Hunters business is independently owned and operated by Starside Estates Limited | Registered Address: 29 Oakwood Park Road, London, N14 6QB | Registered Number: 6741529 England and Wales | VAT No: 943 9575 77 with the written consent of Hunters Franchising Limited.