

for sale

£625,000



Garden Cottage Ashford TN26 3NE

A generously proportioned three-bedroom detached residence set within an enviable plot in the sought-after hamlet of Hookstead, High Halden



Garden Cottage Ashford TN26 3NE

Agents Note

'We are aware that there is a Tree Protection Order in place. Please contact the branch for more details.'

Agents Note

'There is a Private Right of Way on the title, please enquire with the branch'.

Hallway

Cloakroom/Wc

Lounge

Dining Room

Kitchen

Utility Room



First Floor

Bedroom 1

En-Suite

Bedroom 2

Bedroom 3

Bathroom

Outside

Shared Driveway

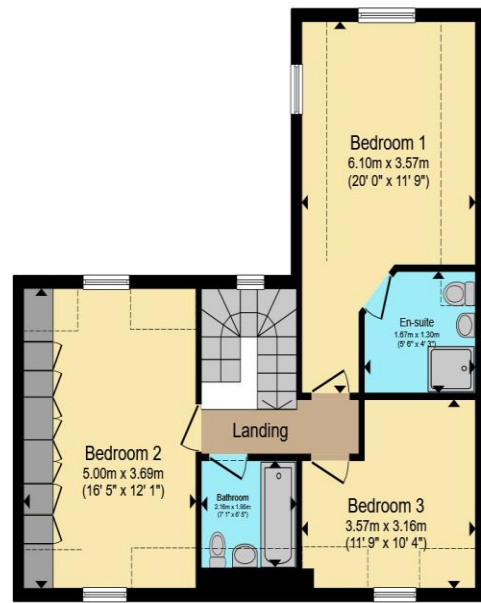
Rear Garden

Outbuilding





Ground Floor



First Floor

Total floor area 129.4 m² (1,393 sq.ft.) approx

This floor plan is for illustrative purposes only. It is not drawn to scale. Any measurements, floor areas (including any total floor area), openings and orientation are approximate. No details are guaranteed, they cannot be relied upon for any purpose and they do not form part of any agreement. No liability is taken for any error, omission or misstatement. A party must rely upon its own inspection(s). Powered by www.propertybox.io



To view this property please contact Connells on

T 01233 502020
E parkfarm@connells.co.uk

Unit 3 Moatfield Meadow Kingsnorth
 ASHFORD TN23 3LU

Property Ref: PFM406735 - 0003

Tenure:Freehold EPC Rating: B

Council Tax Band: F

view this property online [connells.co.uk/Property/PFM406735](https://www.connells.co.uk/Property/PFM406735)



1. MONEY LAUNDERING REGULATIONS Intending purchasers will be asked to produce identification documentation at a later stage and we would ask for your co-operation in order that there will be no delay in agreeing the sale. 2. These particulars do not constitute part or all of an offer or contract. 3. The measurements indicated are supplied for guidance only and as such must be considered incorrect. Potential buyers are advised to recheck measurements before committing to any expense. 4. We have not tested any apparatus, equipment, fixtures, fittings or services and it is in the buyers interest to check the working condition of any appliances.

Connells Residential is registered in England and Wales under company number 1489613, Registered Office is Cumbria House, 16-20 Hockliffe Street, Leighton Buzzard, Bedfordshire, LU7 1GN. VAT Registration Number is 500 2481 05.

see all our properties at www.connells.co.uk | www.rightmove.co.uk | www.zoopla.co.uk