

Spa Road, SE16

£600,000

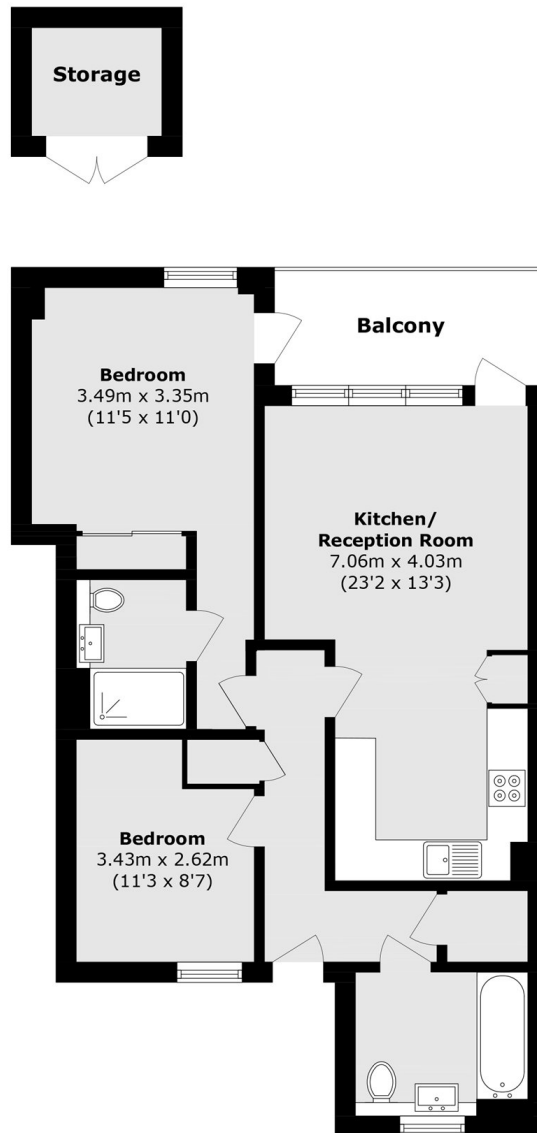
Situated in this sought after development, this two double bedroom flat is in fantastic condition and has a large open plan kitchen living space, two bathrooms, ample storage and private balcony.

Porter Building is 0.4 miles from Bermondsey Underground offering excellent transport links to Canary Wharf and the rest of London. Maltby Street Market, Bermondsey Street and Shad Thames are all moments away.

Features

- Two Double Bedrooms
- Two Bathroom
- Excellent Condition
- Private Balcony
- Additional Storage Unit
- Fantastic Location

Spa Road, London, SE16



Total area (approx.): 67.1 sq. m (722.2 sq. ft)

Balcony area (approx.): 6.0 sq. m (64.5 sq. ft)

Storage area (approx.): 3.0 sq. m (32.2 sq. ft)