



OVER 60?

Secure this property
for up to **59% less!**

Price
£375,000

Freehold

2x  1x  1x 

**Rough Rew, Dorking,
Surrey, RH4**

cubitt & west
Helping you move forwards



Main features

- Bright and spacious end-terrace house with large kitchen/dining area
- Ample scope to update and modernise
- Low maintenance front, rear and side garden
- Easy access to Dorking High Street, schools and stations
- Chain free

Accommodation

SPLIT LEVEL GROUND FLOOR

Porch

Lounge: 16'5 x 13'1 (5.01m x 3.99m)

UPPER GROUND FLOOR

Kitchen/Diner: 16'4 x 13'9 (4.98m x 4.19m)

Utility/Cloakroom: 6'7 x 5'8 (2.01m x 1.73m)

SPLIT LEVEL FIRST FLOOR

Landing

Bedroom 1: 16'6 x 11'8 (5.03m x 3.56m)

UPPER FIRST FLOOR

Landing

Bedroom 2: 13'6 x 9'8 (4.12m x 2.95m)

Shower Room: 6'4 x 5'5 (1.93m x 1.65m)

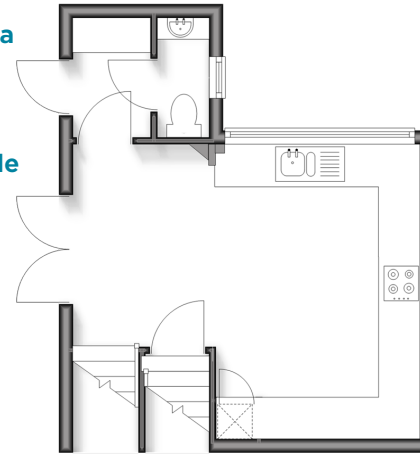
OUTSIDE

Front Garden

Rear Garden

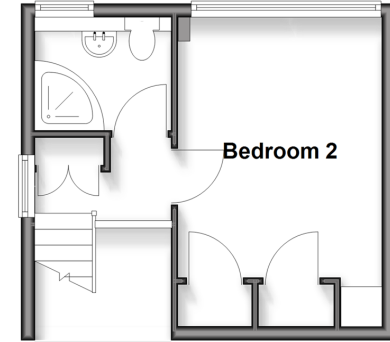
Upper Ground Floor

Approx. 24.6 sq. metres (265.1 sq. feet)



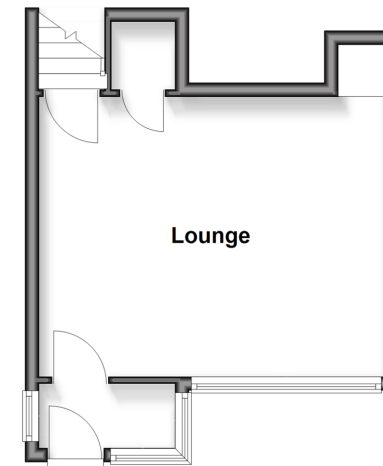
Upper First Floor

Approx. 19.2 sq. metres (207.0 sq. feet)



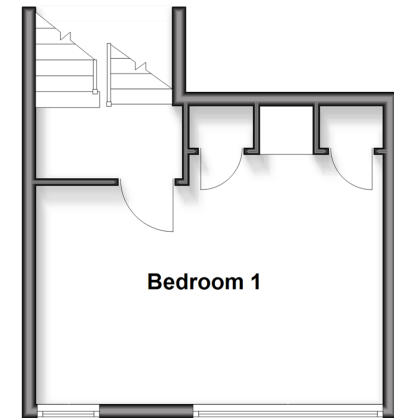
Split Level Ground Floor

Approx. 25.0 sq. metres (269.4 sq. feet)



Split Level First Floor

Approx. 24.0 sq. metres (258.5 sq. feet)



Call Dorking - 01306 883399 ■ cubittandwest.co.uk

- Legal advice should be taken to verify fixtures/fittings, planning, alterations and/or lease details
- Appliances & services are untested, dimensions are approximate and floor plans are not to scale
- Through a Homewise Home For Life Plan people aged 60+ can secure this property for up to 59% less, by purchasing a Lifetime Lease



20511505/20260221/CFE/SB