



## GLOUCESTER PLACE, NW1

£1,250,000

- Three double bedrooms
- Two bathrooms
- Separate kitchen
- 24-hour concierge
- Prime location
- Fourth floor (with lift)

@marshandparsons  
marshandparsons.co.uk

MARSH &  
PARSONS



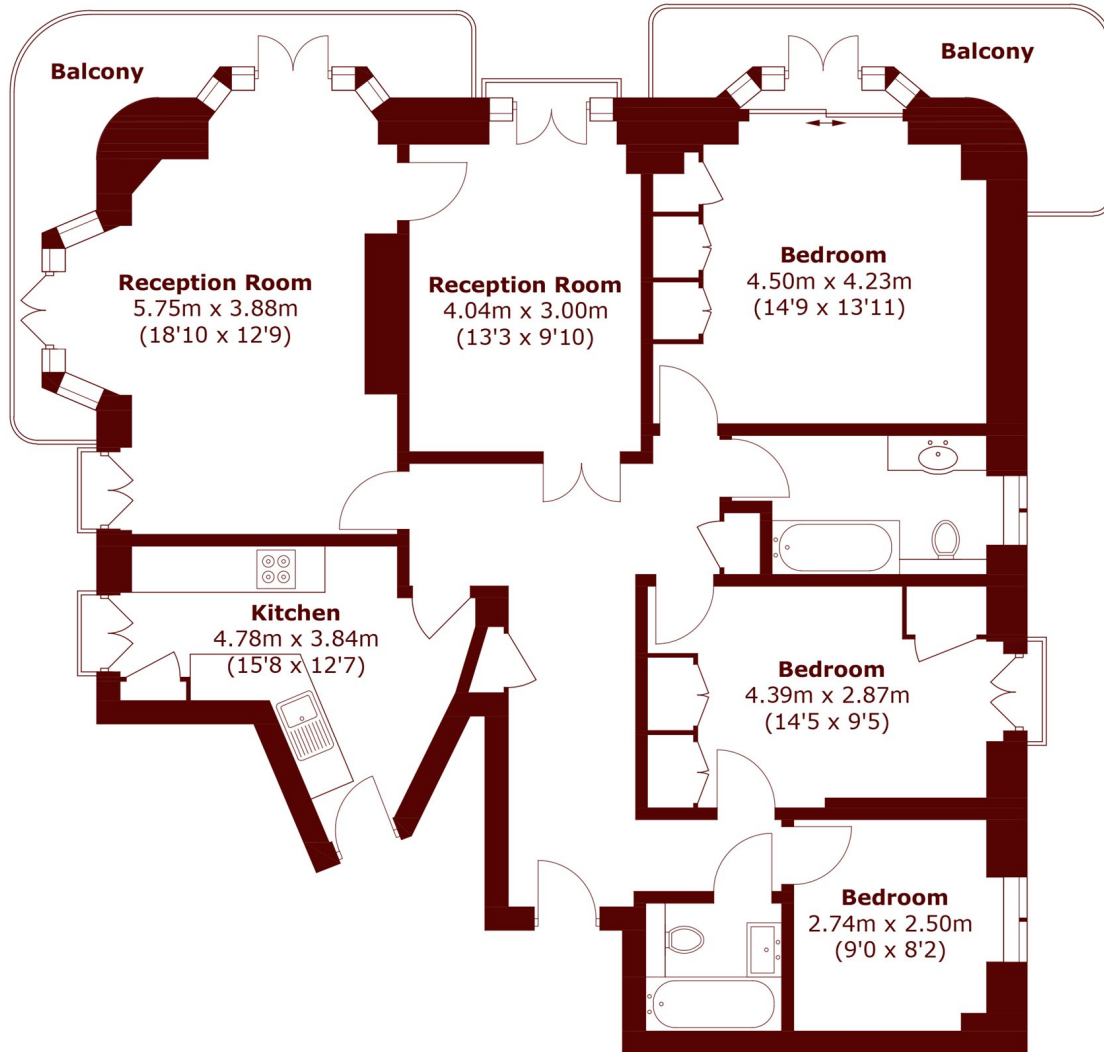
# ABOUT THE PROPERTY

Located in a popular ported building this spacious three-bedroom apartment boasts masses of natural light and wood floors in the hall and both reception rooms. The apartment comprises an eat-in kitchen with built-in appliances, two bright reception rooms, three large double bedrooms and two bathrooms. The property further benefits from a 24-hour porter and its proximity to both Marylebone and Baker Street Stations.

Dorset House is a popular Art deco portered building, with residents parking available through separate arrangement, located just around the corner from the green open spaces of Regent's Park itself and Baker Street tube station.



# STEP INSIDE GLOUCESTER PLACE



## Fourth Floor

Total area (approx.): 113.6 sq. m (1,222.8 sq. ft)  
Balcony: 16.1 sq. m (173.2 sq. ft)

Marylebone & Mayfair  
020 7935 1775

Energy Rating: C We aim to make our particulars both accurate and reliable. However, they are not guaranteed; nor do they form part of an offer or contract. If you require clarification on any points then please contact us, especially if you're traveling some distance to view. Please note that appliances and heating systems have not been tested and therefore no warranties can be given as to their good working order

MARSH &  
PARSONS