



654363 Sherborne Place, Pemberton House, Birmingham, B16 8FN
£1,300 Per month





654363 Sherborne Place, Pemberton House, Birmingham, B16 8FN

£1,300 Per month

Elevated living in the beating heart of Birmingham. Sherborne Place delivers stunning, beautifully finished apartments with sleek modern interiors, thoughtfully designed layouts, and open living spaces made for both unwinding and entertaining in style. Every detail has been obsessed over - from the high-specification kitchens to the crisp, contemporary finishes that run throughout.

Set directly alongside the iconic Brindleyplace, you're perfectly placed at the centre of one of Birmingham's most vibrant neighbourhoods. World-class restaurants, independent boutiques, cultural hotspots, and buzzing waterside bars sit just moments from your front door - with the full energy of the city centre stretching out beyond.

Sherborne Place, created for Birmingham.
Made By ila.

Here at ila, we're changing the rules of renting. We're developing communities around the UK that provide renters with everything that we used to wish for.

Description

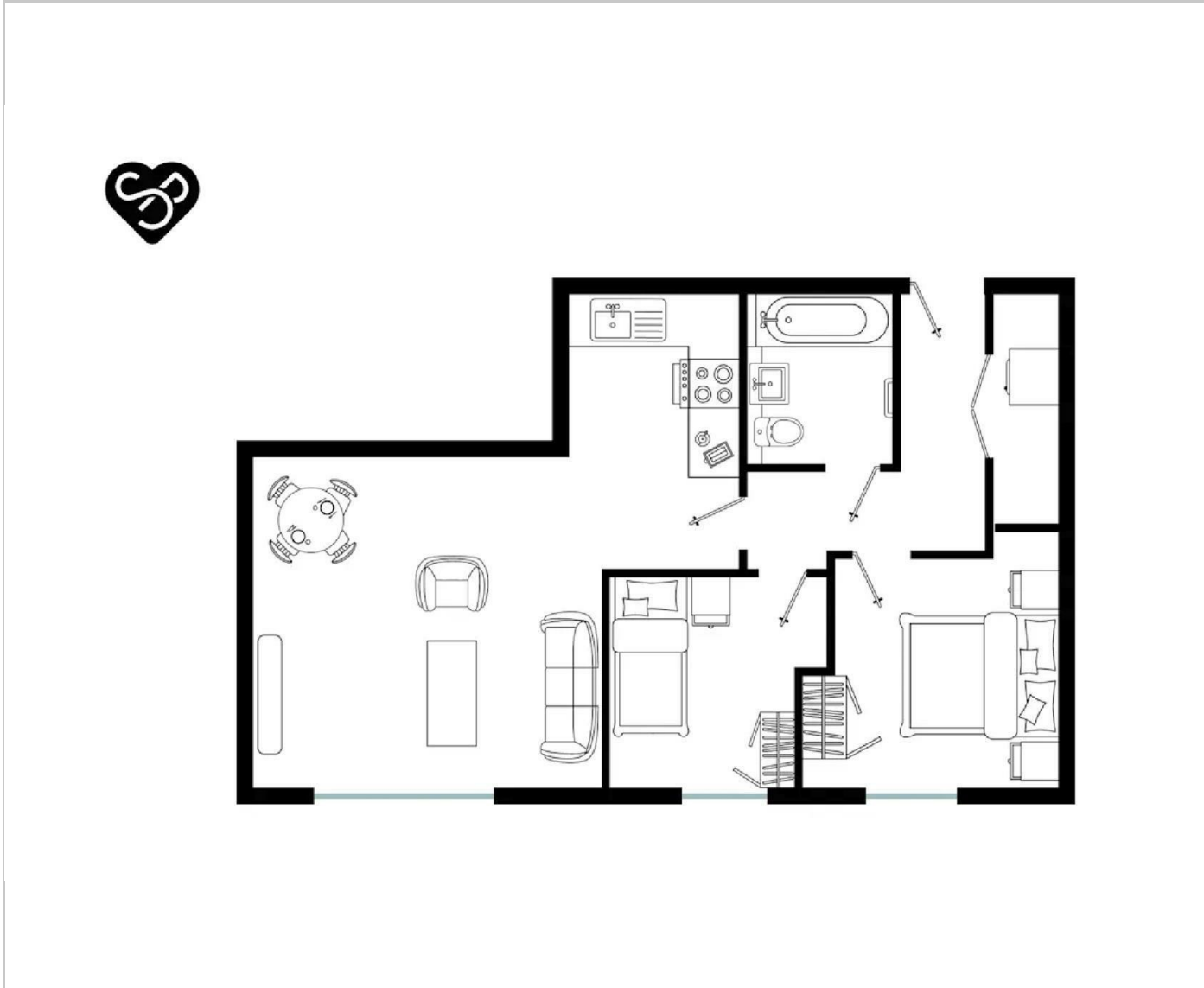


Situation

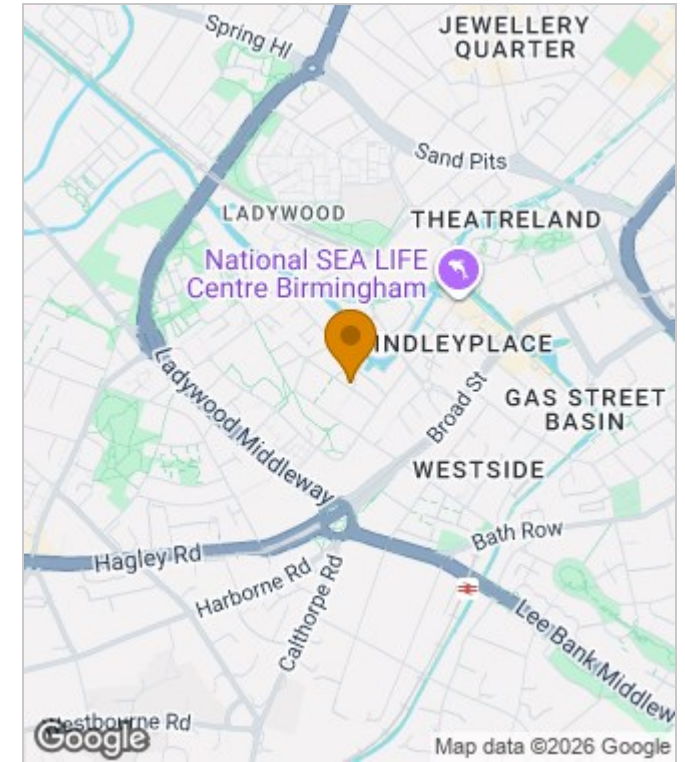


Furnished
Council Tax Band:
Available:

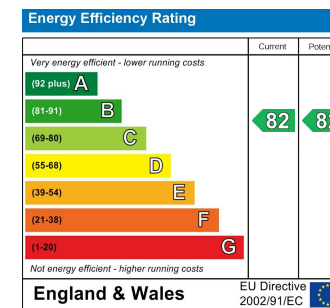
Floor Plans



Area Map



Energy Performance Graph



These particulars, whilst believed to be accurate are set out as a general outline only for guidance and do not constitute any part of an offer or contract. Intending purchasers should not rely on them as statements of representation of fact, but must satisfy themselves by inspection or otherwise as to their accuracy. No person in this firm's employment has the authority to make or give any representation or warranty in respect of the property.

14 Havelock Place Harrow, London, HA1 1LJ

Tel: 0208 488 6296 | Email: info@flagstonespg.co.uk | www.flagstonespropertygroup.co.uk