



Bourton Road, Moreton-In-Marsh



This charming three bedroom home, set within a characterful Grade II listed building, is available with no onward chain and presents an excellent opportunity for both investors and home owners.

The property boasts three generously sized double bedrooms, offering flexible accommodation. Original features are showcased throughout, adding a sense of history and character to the interior, while modern integrated appliances in the kitchen provide convenience for contemporary living.

The high street location places you within immediate reach of local amenities and excellent transport links are nearby, making this an ideal base for commuters or visitors. The combination of period charm and modern touches, alongside its prime position, make this home a rare find in the area. Whether you are looking to expand your investment portfolio, secure a lucrative holiday let, or simply move into a beautifully maintained home, this property offers a versatile and appealing solution.

Please note: There is also an opportunity to purchase **Bank Cottage** and **Old Bank** together. **Old Bank** is being launched to the market simultaneously, and the combined guide price for both properties is **£2,200,000**. For further information regarding the purchase of both properties, please contact our office.

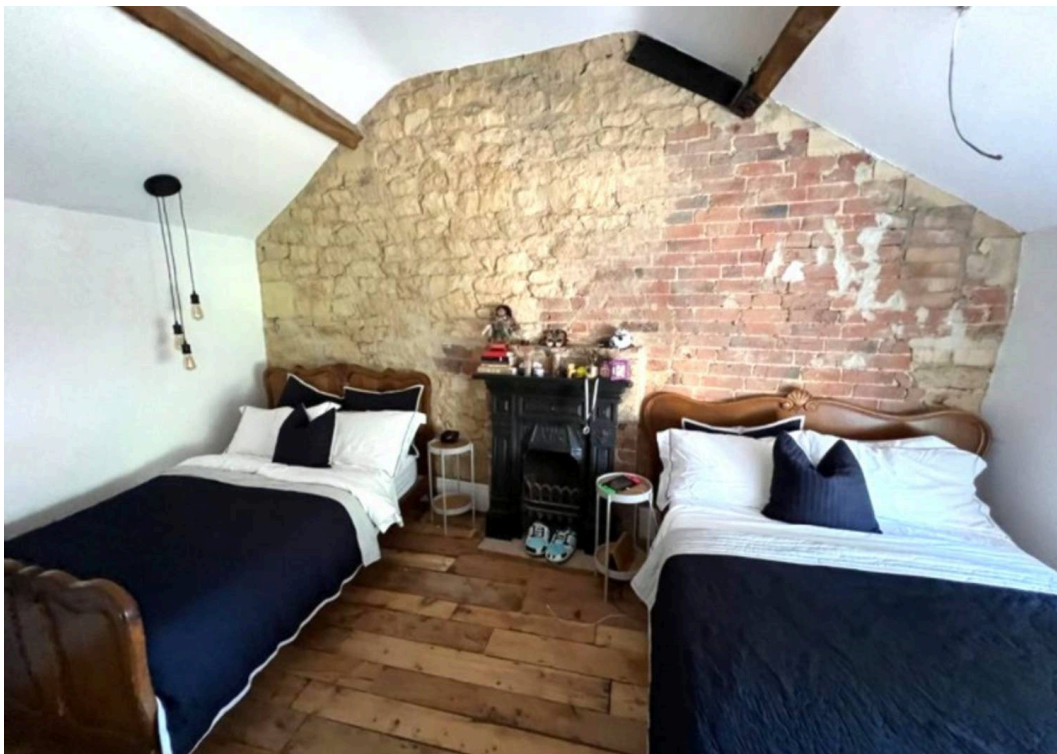
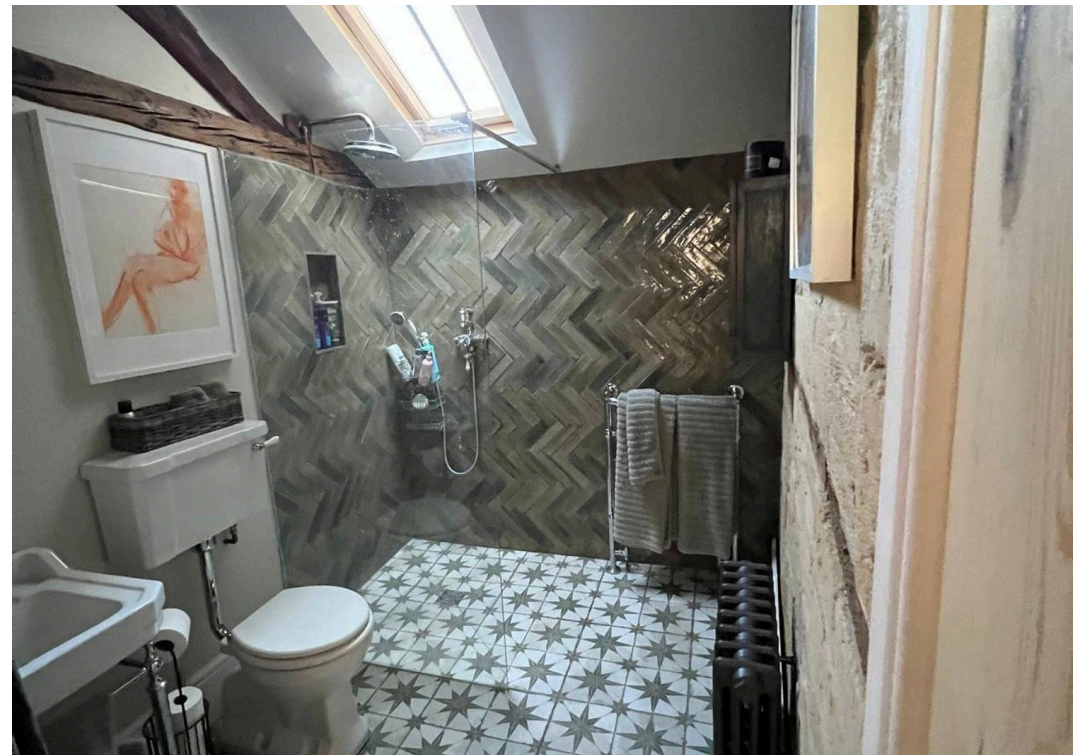


Tenure: We believe the property to be **Leasehold**. We believe the length of the lease to be 999 years. We believe there is no service charge or ground rent for this property. Potential purchasers should obtain confirmation of this from their solicitor prior to exchange of contracts.


Council Tax: C

EPC: B

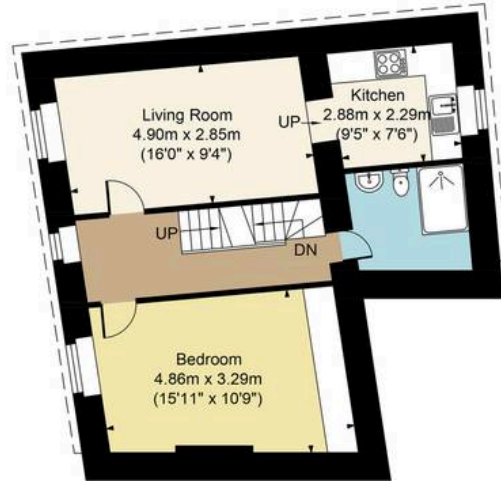
What3Words: ///pizzeria.youths.items



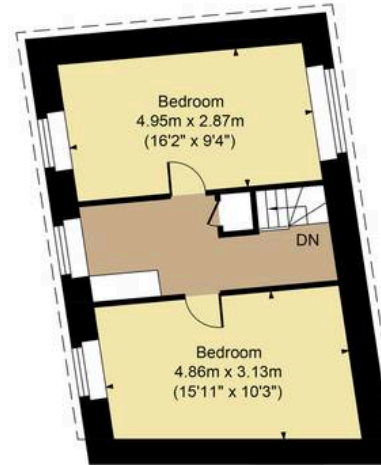
Energy Efficiency Rating

	Current	Potential
Very energy efficient - lower running costs		
(92+) A		
(81-91) B	81	81
(69-80) C		
(55-68) D		
(39-54) E		
(21-38) F		
(1-20) G		
Not energy efficient - higher running costs		
England, Scotland & Wales		EU Directive 2002/91/EC 

Approx. Gross Internal Area:- 88 sq.m 938 sq.ft.



First Floor



Second Floor

FOR ILLUSTRATIVE PURPOSES ONLY-NOT TO SCALE
The position & size of doors, windows, appliances and other features are approximate only.

----- Denotes restricted head height

www.dmlphotography.co.uk