



Chaucer Drive, SE1

£200,000

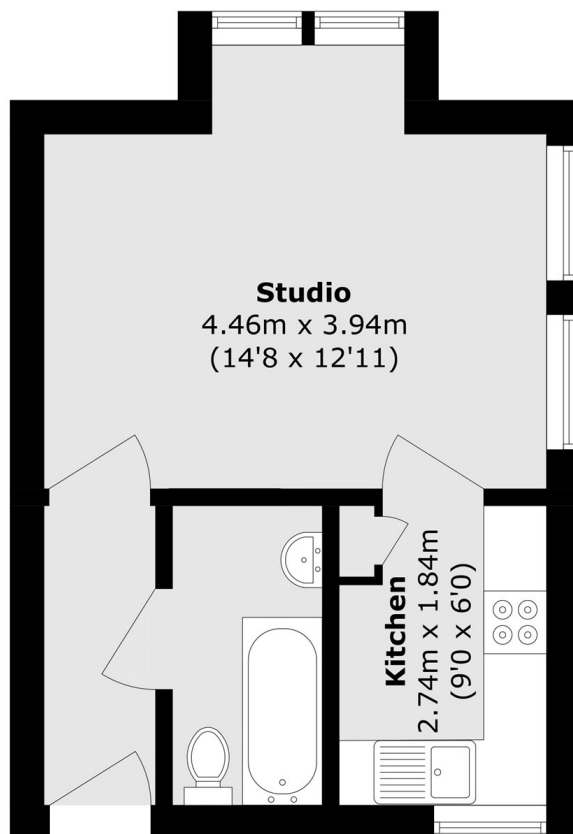
A highly attractive studio flat featuring a spacious living/bedroom area, a separate modern kitchen, and a three-piece bathroom. The property also benefits from ample storage space and allocated off-street parking. Offered chain free, this is an ideal purchase for first-time buyers or investors. Offers in Excess of £200,000

Chaucer Drive is a peaceful residential street, discreetly set back from Rolls Road and within easy reach of a wide range of local amenities. Excellent transport links include nearby bus routes, Elephant & Castle, Bermondsey Underground, and South Bermondsey Station, providing convenient access across London.

Features

Offers in Excess of £200,000
Chain Free Sale
Ground Floor
Studio Flat
Separate Kitchen
Allocated Parking

Chaucer Drive,
London, SE1



Ground Floor

Total area (approx.): 28.0 sq. m (301.3 sq. ft)