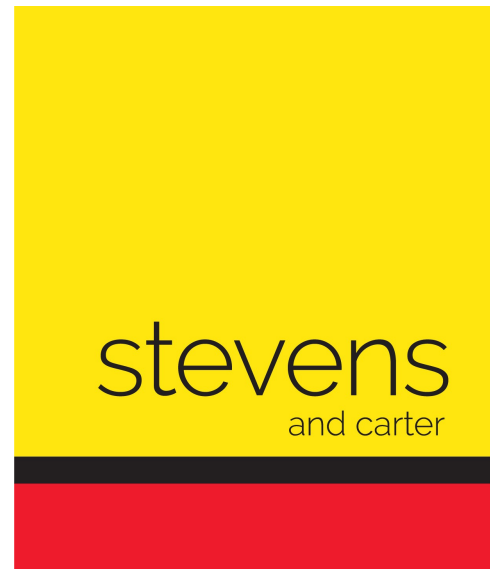


Hawkwood Drive, Hailsham



- 3D Virtual Tour
- Popular North Hailsham Location
- Mid Terrace Family Home
- Some Updating Required
- Spacious Lounge/Dining Room
- Extended Kitchen
- Three Bedrooms & Loft Room
- Off Road Parking
- Great Size Rear Garden
- Viewing Highly Advised - Chain Free Home



Freehold

£299,950

3 BEDROOM 1 RECEPTION 1 BATHROOM 0 GARAGE

Hawkwood Drive, Hailsham

Hawkswood Drive, Hailsham

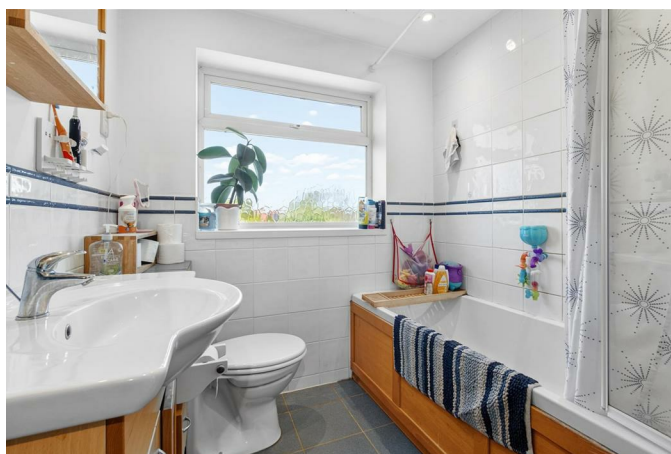
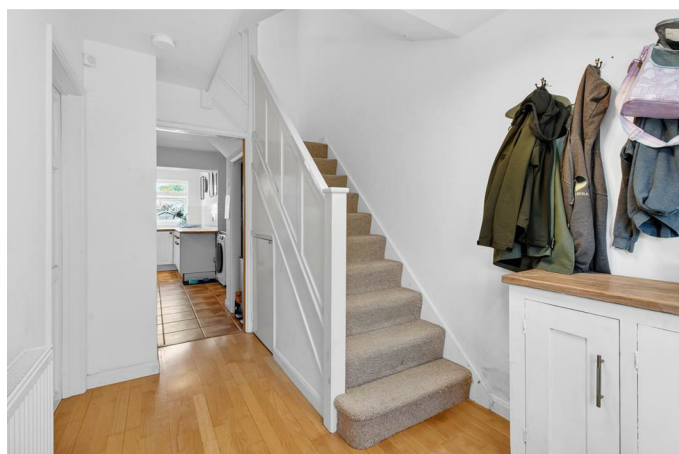
DESCRIPTION

3D Virtual Tour | Mid Terrace Family Home | Popular North Hailsham Location | In Need Of Some Updating | Extended Living Accommodation | Great Size Rear Garden | Off Road Parking | Chain Free

Stevens and Carter are pleased to bring to the market this mid terrace home situated in the popular and desirable North Hailsham Location. Positioned within walking distance to local shops, schools and bus routes it is one not to miss. This home does need a degree of updating, however, it gives its new owners a chance to get creative and design their dream home. Upon entry, the hallway welcomes you in and provides access to all principle rooms. The extended lounge/dining room runs front to back, being the east/west orientation, it is flooded with natural sunlight throughout the day too, this spacious room boasts ample space for your soft furnishings alongside a good size dining table and chairs. A feature fireplace gives the room a lovely focal point and patio doors to the rear over look and afford access onto the garden. The kitchen lies adjacent and benefits from ample cupboards for storage, work surfaces and space for your appliances.

On the first floor you will find three bedrooms, the primary is situated to the rear and benefits from a lovely outlook over the rear garden. The remaining bedrooms are situated close by and are serviced by a bathroom/WC. Finally to complete the internal accommodation, the second floor a loft room is present which would make a fantastic home office.

Externally, off road parking can be found to the front whilst the rear garden provides a large patio which captures the sun throughout the afternoon, a good size large with a variety of mature shrubs and trees.



Hawkswood Drive, Hailsham

- Porch 2.13m x 0.64m (7'0 x 2'1)
- Hallway 3.94m x 2.13m (12'11 x 7'0)
- Kitchen 5.05m x 2.74m (16'7 x 9'0)
- Lounge 6.68m x 3.05m (21'11 x 10'0)
- Dining Area 2.82m x 2.06m (9'3 x 6'9)
- First Floor Landing 2.34m x 1.60m (7'8 x 5'3)
- Bedroom 3.30m x 2.97m (10'10 x 9'9)
- Bedroom 3.66m x 3.30m (12'0 x 10'10)
- Bedroom 2.13m x 2.11m (7'0 x 6'11)
- Bathroom/WC 2.01m x 1.98m (6'7 x 6'6)
- WC 2.13m x 0.76m (7'0 x 2'6)
- Loft Room 3.96m x 3.78m (13'0 x 12'5)
- Off Road Parking
- Lovely Size Rear Garden