



St Georges Square
London, SW1V

Asking Price £1,750,000

CHESTERTONS





A stunning three double bedroom period conversion situated within this handsome stucco fronted building further comprising large open plan reception room with modern kitchen and dining area and two bathrooms. The property is laterally spacious, superbly presented through-out and benefits from great natural light and has access to one of Pimlico's finest garden squares.

St. Georges Square is conveniently located moments from the river Thames, Battersea Power Station, Battersea Park and a great selection of shops, cafes and restaurants of Pimlico and Westminster. There are numerous transport links available including Pimlico (Victoria underground line) and Victoria station (Victoria, Circle and District underground lines, Mainline station and Gatwick Express).

- An Incredibly Light and Laterally Spacious Conversion
- Handsome Stucco Fronted Building
- One of Pimlico's Finest Garden Squares
- Large Open Plan Reception Room
- Modern Kitchen and Dining Area
- Three Double Bedrooms and Two Bathrooms

Energy Efficiency Rating		
Energy efficient - lower running costs	Current	Potential
92-100 A		
81-91 B		
69-80 C	76	81
55-68 D		
49-54 E		
41-48 F		
35-39 G		
Not energy efficient - higher running costs		
England, Scotland & Wales EU Directive 2002/91/EC		

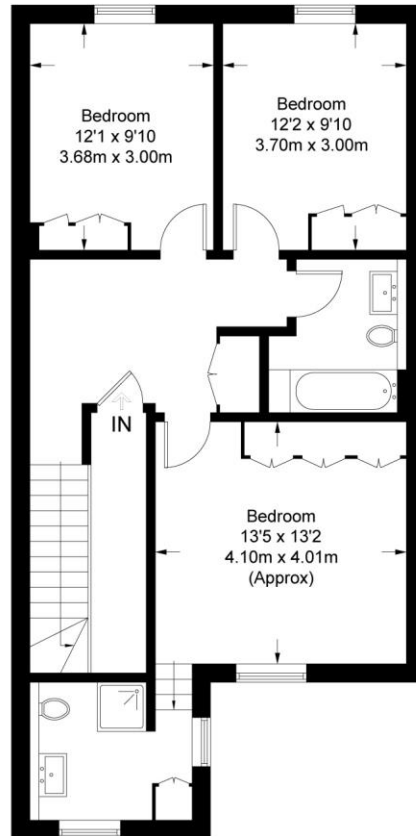
Tenure: Leasehold expiring October 3007 plus Share of Freehold
Service Charge: £7,200 (Approximately)
Ground Rent: £160
Local Authority: Westminster
Council Tax Band: G

Chestertons Westminster & Pimlico Sales

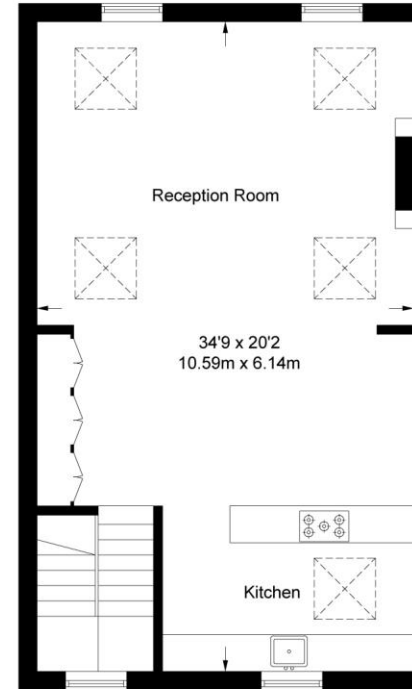
105 Wilton Road
 London
 SW1V 1DZ
 westminster@chestertons.co.uk
 020 3040 8201
 chestertons.co.uk

St George's Square

Approximate Gross Internal Area = 1425 sq ft / 132.4 sq m



Third Floor = 723 sq ft / 67.2 sq m



Fourth Floor = 702 sq ft / 65.2 sq m

Not to scale, for guidance only and must not be relied upon as a statement of fact.
All measurements and areas are approximate only and have been prepared in accordance with the current edition of the RICS Code of Measuring Practice.

Chesterton UK Services Limited trading as Chestertons for themselves and for the vendor of this property whose agents they are, give notice that (i) these particulars do not constitute any part of an offer or contract, (ii) all statements contained within these particulars are made without responsibility on the part of Chestertons or the vendor, (iii) whilst made in good faith, none of the statements contained within these particulars are to be relied upon as a statement or representation of fact, (iv) any intending purchasers must satisfy themselves by inspection or otherwise as to the correctness of each of the statements contained within these particulars, (v) the vendor does not make or give either Chestertons or any person in their employment any authority to make or give representation or warranty whatsoever in relation to this property. Wide angle lenses may be used. ©Copyright Chestertons | Chesterton UK Services Limited | Registered Office 40 Connaught Street, Hyde Park, London W2 2AB Registered Company Number 05334580.



This paper is
100% recyclable