



## Jardine Road, E1W

£450,000

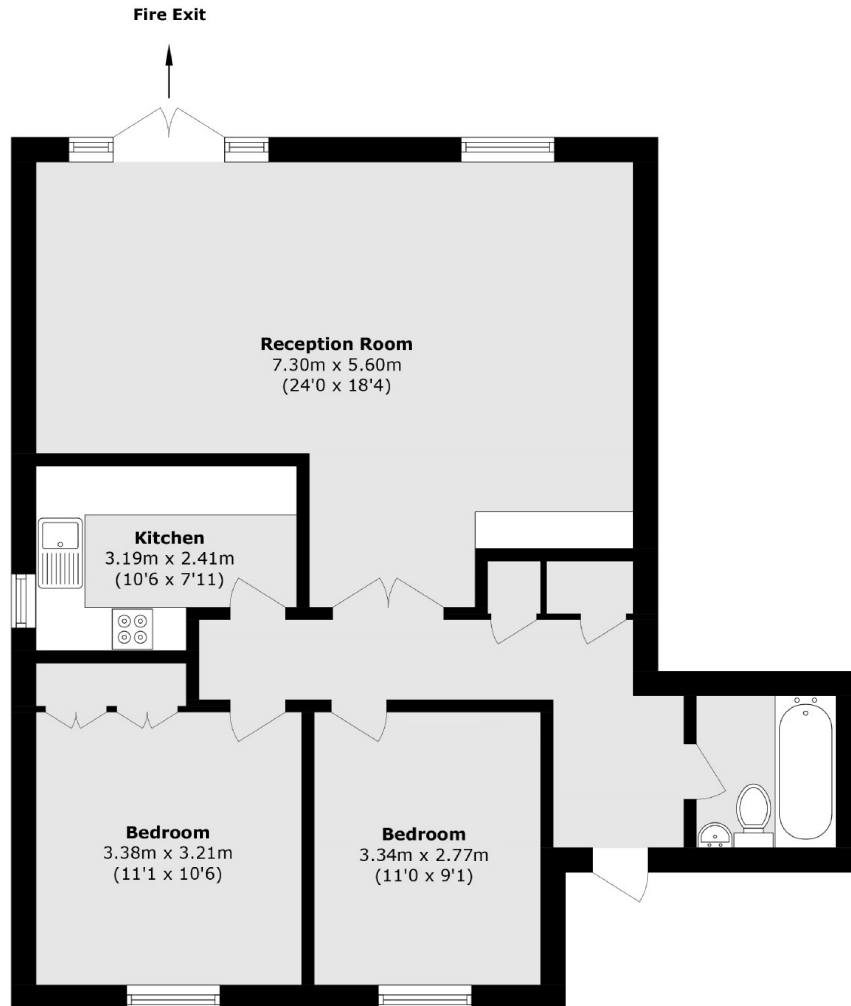
A beautifully positioned riverside two-bedroom residence, offering over 820 square feet of generously proportioned living space on one level. This well-presented home benefits from two spacious double bedrooms, a private balcony with river views, residents' parking, a day porter, and is offered to the market with no onward chain.

Located in one of Wapping's most sought-after developments, Atlantic Wharf, this home is perfectly positioned for easy access to the Thames Path, Limehouse DLR Station, and Canary Wharf.

### Features

- 820 Square Feet
- Residents Gardens
- Private Balcony
- River Views
- Residents Parking
- No Onward Chain

# Jardine Road, London, E1W



Total area (approx.): 76.2 sq. m (820.2 sq. ft)