



Connells

Verona Warwick Court
Stratford-Upon-Avon



Property Description

A beautifully light and airy second-floor apartment enjoying peaceful Canalside views and a well-designed layout, with a gross internal area of 605 sq ft. The property features a private inner hall, a generous open-plan living and dining space with access to a walk-out balcony, and a well-equipped kitchen ideal for modern living. The spacious double bedroom is complemented by a contemporary bathroom, while additional benefits include loft storage, a single garage, and access to attractive communal gardens. Offered with no onward chain, this home is perfect for first-time buyers, investors, or those seeking a low-maintenance town centre lifestyle.

Entrance Hallway

Welcoming entrance hallway.

Open Plan Living/Kitchen Area

21' 1" x 14' (6.43m x 4.27m)

The heart of the home is a bright and spacious open-plan kitchen and lounge, designed for both comfort and style. With sleek modern units, integrated appliances, and ample space for dining and relaxing, this inviting area opens directly onto a private balcony with calming Canalside views—perfect for entertaining or unwinding.

Bedroom One

12' 1" x 10' 7" (3.68m x 3.23m)

The spacious double bedroom is filled with natural light from a large window, creating a calm and comfortable retreat. With ample

room for furnishings and a peaceful outlook, it's the perfect place to unwind and relax.

Bathroom

The bathroom is sleek and contemporary, featuring stylish tiling, a full-size bath with shower over, a modern vanity unit, and chrome fittings—offering a clean, fresh space to start or end your day in comfort.

Garage

15' 1" x 7' 10" (4.60m x 2.39m)

Single garage en bloc.

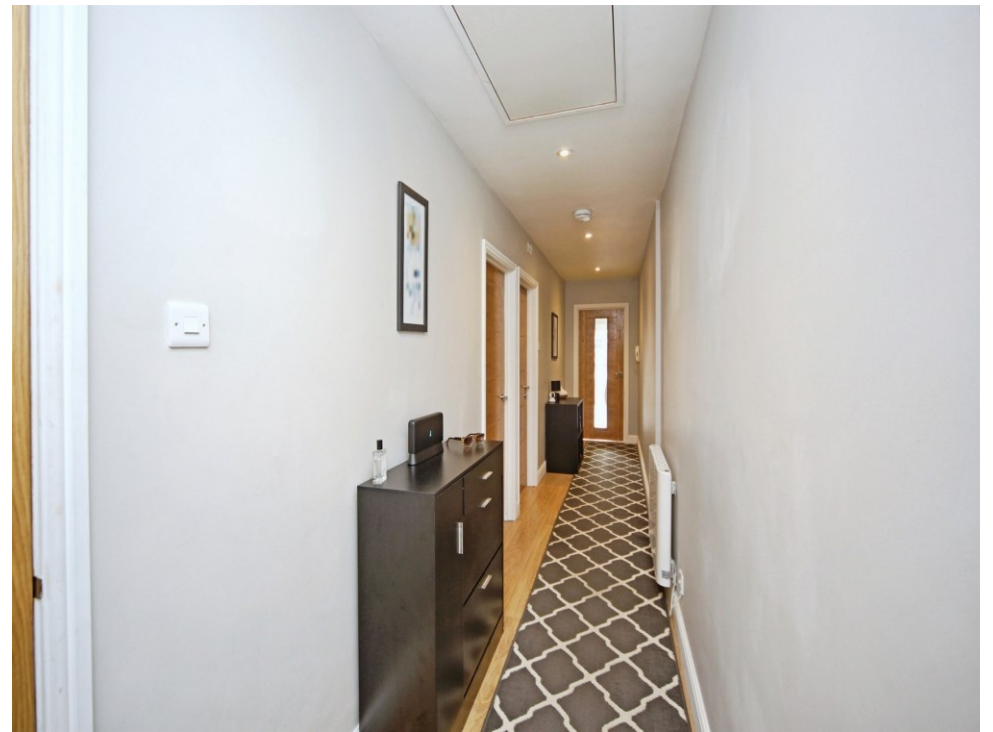
Parking

Residents Communal Parking.

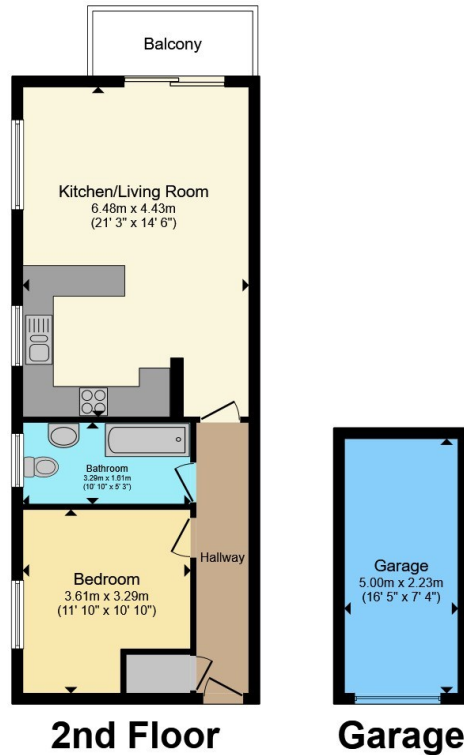
Communal Gardens

The property benefits from well-maintained communal gardens, offering a peaceful outdoor space to relax, enjoy the greenery, or take in the Canalside setting—perfect for residents seeking a touch of nature close to town.









Total floor area 63.9 m² (687 sq.ft.) approx

This floor plan is for illustrative purposes only. It is not drawn to scale. Any measurements, floor areas (including any total floor area), openings and orientation are approximate. No details are guaranteed, they cannot be relied upon for any purpose and they do not form part of any agreement. No liability is taken for any error, omission or misstatement. A party must rely upon its own inspection(s). Powered by www.propertybox.io



To view this property please contact Connells on

T 01789 266204
E stratforduponavon@connells.co.uk

11B Meer Street
 STRATFORD UPON AVON CV37 6QB

EPC Rating: F Council Tax Band: C

Service Charge: 1848.00

Ground Rent: Ask Agent

Tenure: Leasehold

view this property online connells.co.uk/Property/STR108756

This is a Leasehold property. We are awaiting further details about the Term of the lease. For further information please contact the branch. Please note additional fees could be incurred for items such as Leasehold packs.



1. MONEY LAUNDERING REGULATIONS Intending purchasers will be asked to produce identification documentation at a later stage and we would ask for your co-operation in order that there will be no delay in agreeing the sale. 2. These particulars do not constitute part or all of an offer or contract. 3. The measurements indicated are supplied for guidance only and as such must be considered incorrect. Potential buyers are advised to recheck measurements before committing to any expense. 4. We have not tested any apparatus, equipment, fixtures, fittings or services and it is in the buyers interest to check the working condition of any appliances.

Connells Residential is registered in England and Wales under company number 1489613, Registered Office is Cumbria House, 16-20 Hockliffe Street, Leighton Buzzard, Bedfordshire, LU7 1GN. VAT Registration Number is 500 2481 05.

See all our properties at www.connells.co.uk | www.rightmove.co.uk | www.zoopla.co.uk

Property Ref: STR108756 - 0007