



Hyde Gardens, Langtoft Peterborough  
**£395,000 Freehold**

**Sharman  
Quinney**

# Key Features



- Four Bedrooms
- Beautifully Refitted Kitchen/Diner
- Refitted bathroom
- Three Reception Rooms
- Garden Room with Vaulted Ceiling

Situated within walking distance to the village shop and post office, this delightful home has been cleverly extended to offer a beautifully refitted kitchen dining room, a large open plan L shaped lounge dining room as well as a stunning garden room taking full advantage of the well landscaped gardens. To the first floor are four bedrooms and a modern refitted bathroom. The property is approached via a large driveway offering off road parking for numerous vehicles and access to a single garage with electric roller door. The gardens to the rear are a real feature offering enclosed fencing, mature hedging, large lawns with patio seating areas timber gazebo and further covered seating as well as a summer house with French door and a second summer house.

Accommodation Includes



Entrance Hall

Cloakroom

Sitting Room

6.60m x 3.66m min 4.29m max (21'8" x 12' (min)  
14'1" (max).

Dining Room/Snug

2.74m x 3.33m (9' x 10'11").

Garden Room

4.44m x 3.07m (14'7" x 10'1").

Kitchen/Dining Room

5.89m x 5.41m (19'4" x 17'9"). L shaped.

First Floor Landing

Bedroom

3.76m x 3.48m (12'4" x 11'5").

Bedroom

2.67m x 2.69m (8'9" x 8'10").

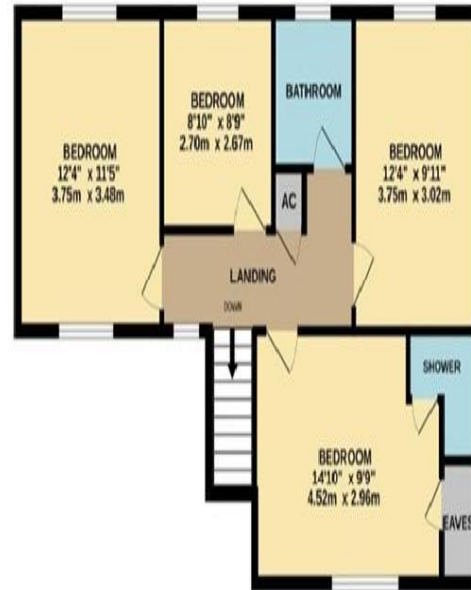
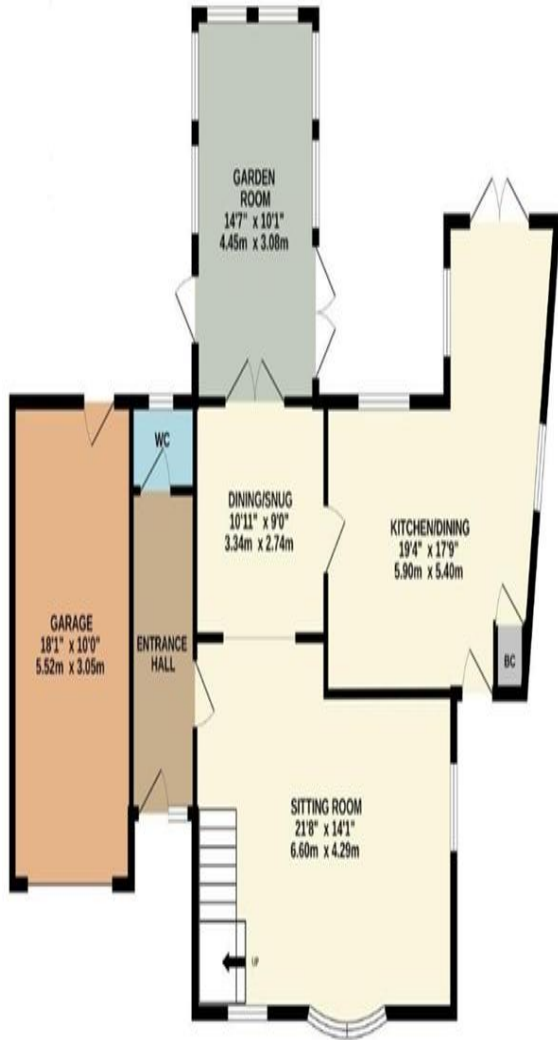
Bedroom

4.52m x 2.97m (14'10" x 9'9").

En Suite Shower

Bathroom





Bedroom  
3.76m x 3.02m (12'4" x 9'11").

#### Outside

A secluded spot toward the end of an established and popular cul de sac, the frontage is partially enclosed by low brick wall and laid gravel offering ample parking for four vehicles, leading to a single garage with electric roller door, power and light. Large rear gardens, enclosed by fencing and mature hedging, shaped lawns with patio seating areas timber gazebo with further covered seating a summer house with French door, second summer house.

To view this property call Sharman Quinney on:  
**01778 343322**

# Selling your property?

Contact us to arrange a **FREE** home valuation.

 01778 343322

 25 Market Place, Market Deeping,  
PETERBOROUGH, Cambridgeshire, PE6 8EA

 marketdeeping@sharmanquinney.co.uk

 [www.sharmanquinney.co.uk](http://www.sharmanquinney.co.uk)



 SCAN ME



Sharman Quinney Holdings Limited is registered in England and Wales under company number 4174227, Registered Office is Cumbria House, 16-20 Hockliffe Street, Leighton Buzzard, Bedfordshire, LU7 1GN. VAT Registration Number is 500 2481 05.

1: These particulars do not constitute part or all of an offer or contract. 2: The measurements indicated are supplied for guidance only and as such must be considered incorrect. 3: Potential buyers are advised to recheck the measurements before committing to any expense. 4: Sharman Quinney has not tested any apparatus, equipment, fixtures, fittings or services and it is the buyers interests to check the working condition of any appliances. 5: Sharman Quinney has not sought to verify the legal title of the property and buyers must obtain verification from their legal representative. 6: Intending purchasers will be asked to produce identification documentation at a later stage and we would ask your co-operation in order that there will be no delay in agreeing the sale. Ref: MRD204582 - 0001

