



# Falcon

01752 600444

## 35 Beechcroft Road

Beacon Park, Plymouth, PL2 3JY

Guide Price £260,000-£270,000





## In Brief

### Three Bedroom 1930s Semi in Prime Location + Generous South-West Facing Garden

<b>Reception Rooms</b>	Large living room with separate dining room		
<b>Bedrooms</b>	3 Bedrooms		
<b>Heating</b>	Gas central heating	<b>Parking</b>	On street parking
<b>Area</b>	1071 sq ft	<b>Council Tax</b>	C
<b>Tenure</b>	Freehold		

## Description

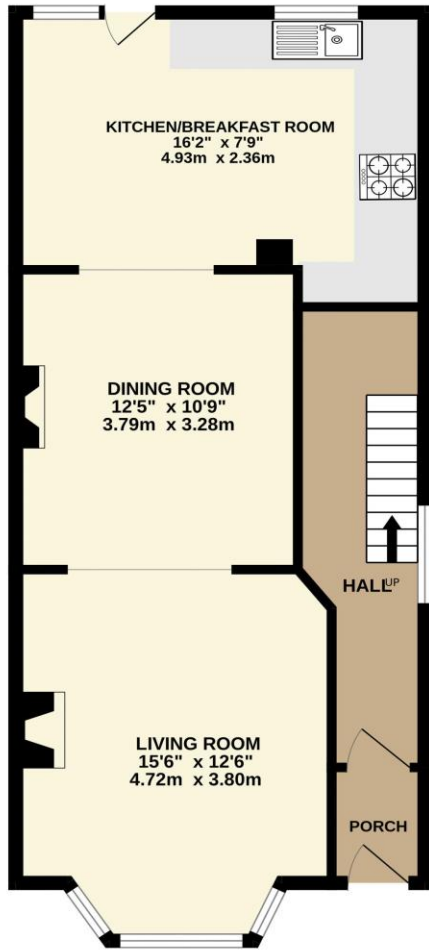
Situated in a highly sought-after location, this attractive 1930s three-bedroom semi-detached family home offers spacious accommodation and excellent potential for further improvement and upgrading. The welcoming entrance hallway leads to a generous living room, which opens into a separate dining room, creating an ideal space for family life and entertaining. Double doors open into the extended kitchen/breakfast room, a particularly impressive area and the true heart of the home, with direct access to the rear garden. To the first floor are three well-proportioned bedrooms and a modern fitted family bathroom. Additional benefits include gas central heating and uPVC double glazing. Outside, the property enjoys a good-sized, level rear garden featuring a large artificial lawn and an extensive patio seating area. The south-westerly aspect ensures plenty of sunshine throughout the day, making it perfect for outdoor dining and relaxation. Ideally located close to highly regarded schools, including Montpelier, and within easy reach of Central Park, this is a fantastic opportunity to create a wonderful long-term family home with some updating and personalisation.

Need A Mortgage?

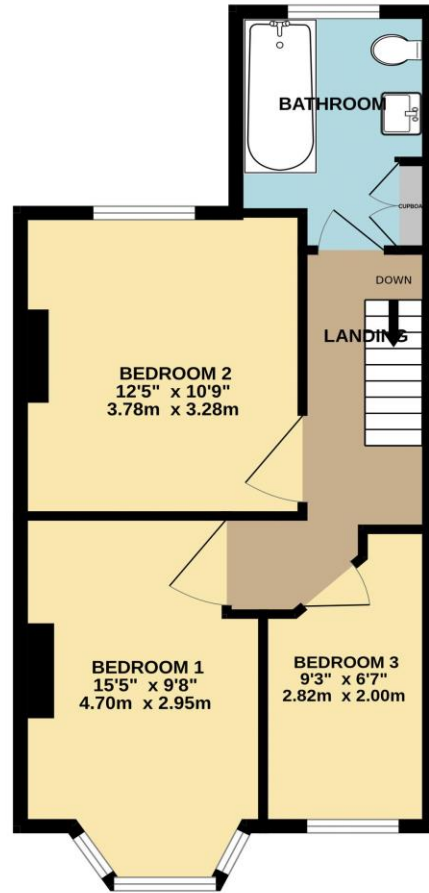
Don't pay more than you need to for your mortgage advice:  
ours is only £195 paid when you move!

# Floor Plans

GROUND FLOOR



1ST FLOOR



Made with Metropix ©2026



Fixed Price Conveyancing

A complete solution from just £600 with No sale – No Fee



We have not tested any apparatus, equipment, fixtures and fittings or services and so cannot verify that they are connected, in working order or fit for the purpose. Neither have we had sight of the legal documents to verify the Freehold or Leasehold status of any property; or sight of any consents, including Planning Permissions, building Regulations and Breaches of Covenants that may be required for alterations to the property. A buyer is advised to obtain verification from their Solicitor and/or Surveyor. Items shown in photographs are NOT included unless specifically mentioned within the Sales Particulars. Any floor plans on these details are not drawn to scale and are intended for guidance only

Falcon Property is an Introducer to Bradleys Financial Management Ltd. They are appointed representatives of Sesame Ltd who are authorised and regulated by the Financial Services Authority. Bradleys do not charge for mortgage advice, however a fee paying option is available. Typical fee is £195. Bradleys Financial Management: 16 Mannamead Road, Mutley, Plymouth, PL4 7AA

**Your home may be repossessed if you do not keep up repayments on your mortgage.**

Score	Energy rating	Current	Potential
92+	A		
81-91	B		81 B
69-80	C		
55-68	D	63 D	
39-54	E		
21-38	F		
1-20	G		

