

sansome
& george



Middle Barn, Minchens Court Minchens Lane

Bramley

£325,000

5 Middle Barn

Minchens Court Minchens Lane, Tadley

Sansome & George - Presenting this charming and stylish 2-bedroom period apartment located in the heart of a Bramley village. This delightful first floor property boasts a spacious 631 sq ft layout, offering a perfect blend of character and modern comforts. The apartment features a bright and inviting living space, ideal for relaxation and entertaining guests. Enjoy the convenience of off-street parking, ensuring hassle-free mobility. Embrace the charm of village life while still being within easy reach of local amenities and transport links. This property is perfect for those seeking a cosy yet stylish retreat in a sought-after location. Don't miss this opportunity to make this wonderful apartment your own. Contact us today to arrange a viewing and experience the unique appeal of this village gem.

EPC EER - B

Council Tax Band - C

Council - Basingstoke & Deane

Lease - 125 years from 2004

Lease term remaining - 989 years

Service charge - £954 pa

EPC Energy Efficiency Rating: B

EPC Environmental Impact Rating: B



SANSOME
&GEORGE



SANSOME
&GEORGE



SANSOME
&GEORGE



SANSOME
&GEORGE



OME
ORGE



Middle Barn

Minchens Court Minchens Lane, Tadley

- Two Bedroom split level apartment
- Open Plan Living Room/Kitchen
- 2 Bedrooms
- Bathroom
- Allocated Parking



sansome
& george

SANSOME
&GEORGE



SANSOME
&GEORGE



SANSOME
&GEORGE

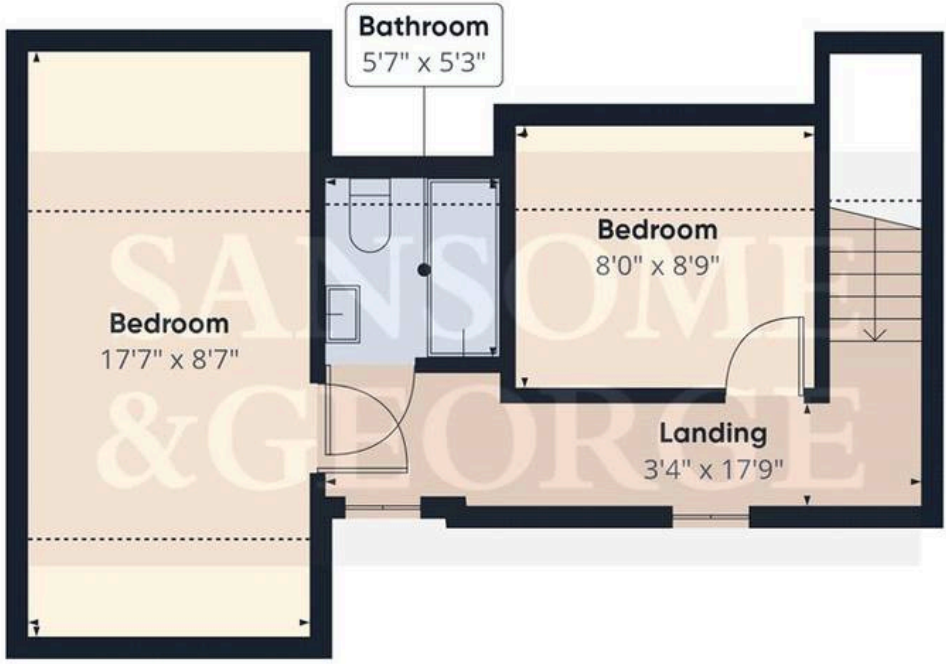


SANSOME
&GEORGE





Floor 0



Floor 1

Approximate total area⁽¹⁾

631 ft²

Reduced headroom

88 ft²

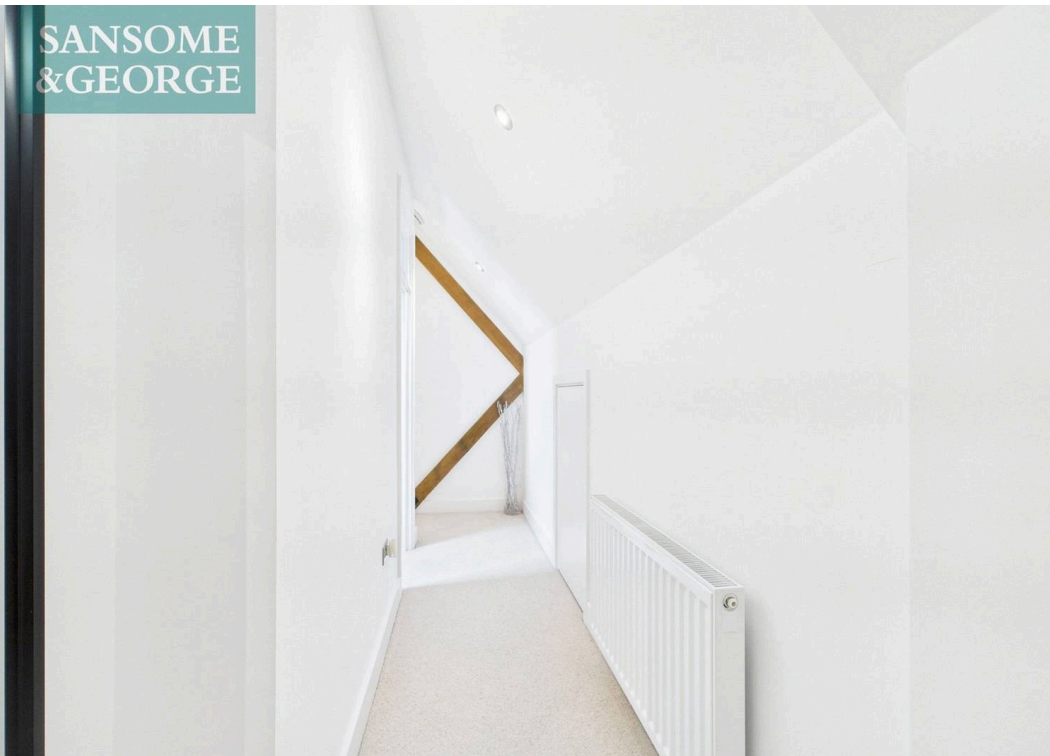
(1) Excluding balconies and terraces

Reduced headroom

..... Below 5 ft

Calculations reference the RICS IPMS 3C standard. Measurements are approximate and not to scale. This floor plan is intended for illustration only.

SANSOME
&GEORGE



SANSOME
&GEORGE

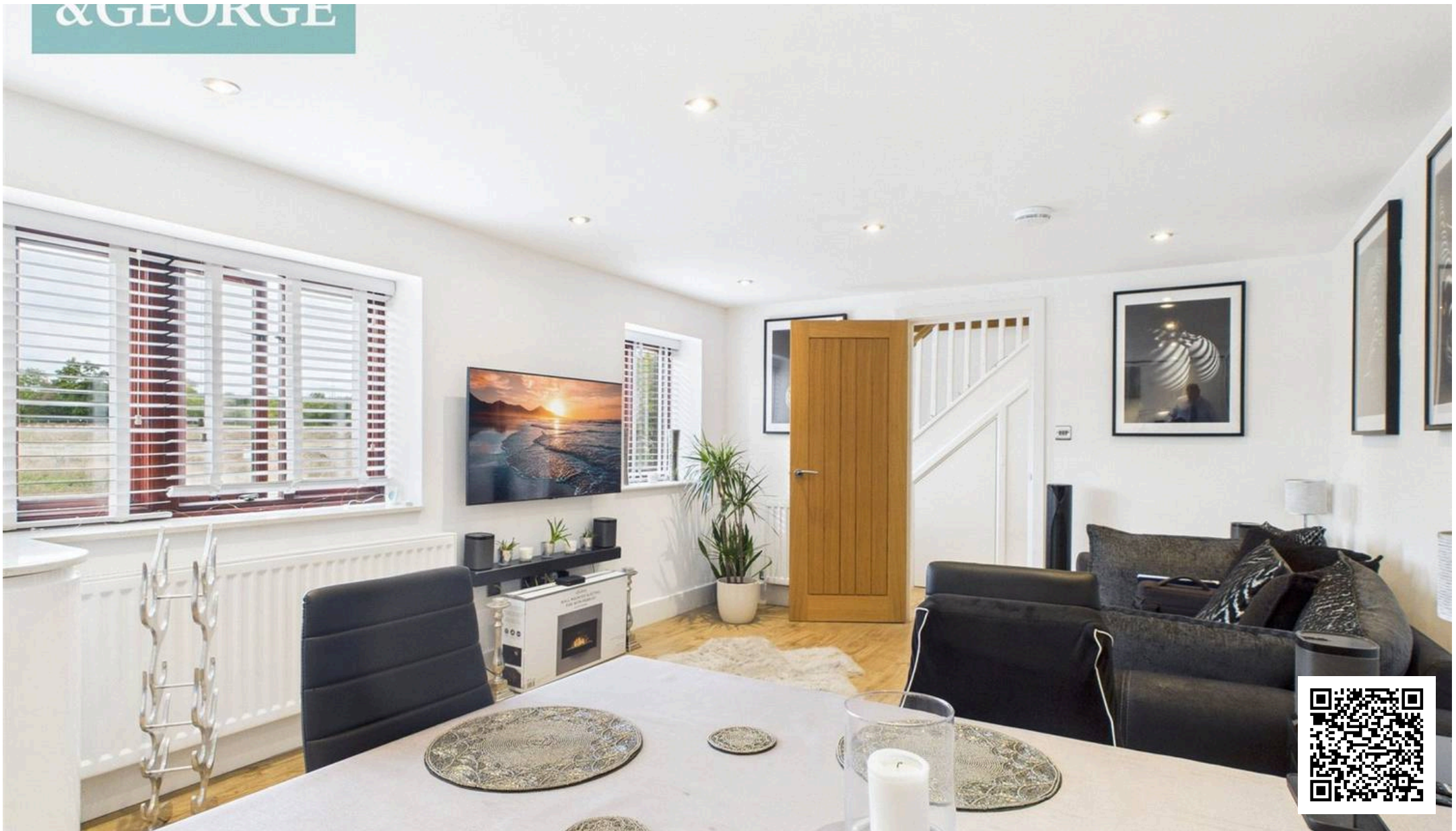


SANSOME
&GEORGE



SANSOME
&GEORGE





Sansome & George Bramley Office

Sansome & George, Sherfield Road – RG26 5AG

01256 882979 • • www.sansomeandgeorge.co.uk/

Disclaimer: Every attempt has been made to ensure accuracy, however these property particulars are approximate and for illustrative purposes only. They have been prepared in good faith and they are not intended to constitute part of an offer of contract. We have not carried out a structural survey and the services, appliances and specific fittings have not been tested. All photographs, measurements, floor plans and distances referred to are given as a guide only