

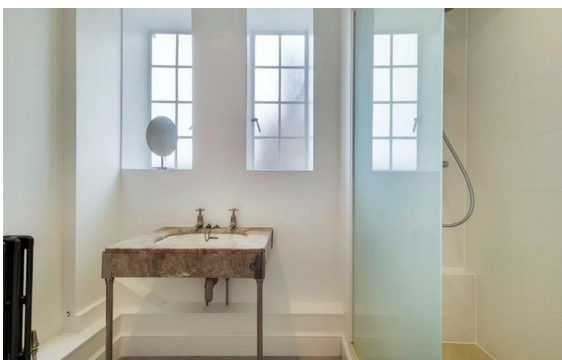


**Grove End Road, St John's Wood, London, NW8**

Rent £750 Per Month

2 Bed | 1 Bath | 1 Reception

*Please call us on 020 7724 2233 or email us [info@newingtonstates.com](mailto:info@newingtonstates.com) to book a viewing.*



A well-presented two-bedroom apartment set within a sought-after portered building, offering stylish interiors and a practical layout in a prime location. The property comprises a bright reception room, a separate, fully fitted kitchen, and two well-proportioned bedrooms.

Residents enjoy the convenience of a secure and well-maintained building, with porter services adding an extra level of comfort and security.

EPC rating: C

## Energy Efficiency Rating: C

Agents Note: Whilst every care has been taken to prepare these particulars, they are for guidance purposes only. All measurements are approximate and are for general guidance purposes only and whilst every care has been taken to ensure their accuracy, they should not be relied upon and potential buyers/tenants are advised to recheck the measurements.

**NEWINGTON**  
— ESTATES —

60 Upper Montagu Street

London

W1H 1SN

020 7724 2233

[info@newingtonstates.com](mailto:info@newingtonstates.com)

<http://www.newingtonstates.com>