



Ritherdon Road
Balham, SW17

CHESTERTONS





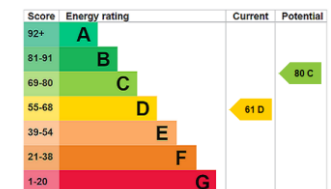
A bright and spacious top floor flat on a pretty tree-lined street, close to Balham station and Tooting Common.

Located in the Heaver Estate Conservation Area, the 806 square foot, split-level property comprises entrance hall, dine-in kitchen, sitting room, two double bedrooms and bathroom.

Benefitting from a Share of Freehold and communal garden, the flat is in close proximity to the shops, cafes and bars on Balham High Road and also the Tooting Commons.

- Two double bedrooms
- 806 sq.ft.
- Share of Freehold
- 0.6 miles to Balham Station
- Communal garden
- Heaver Conservation Area

Asking Price £475,000



Tenure: Share of Freehold 991 years remaining

Service Charge: £2400 per annum

Local Authority: London Borough of Wandsworth

Council Tax Band: C

Chestertons Wandsworth Sales

47 East Hill

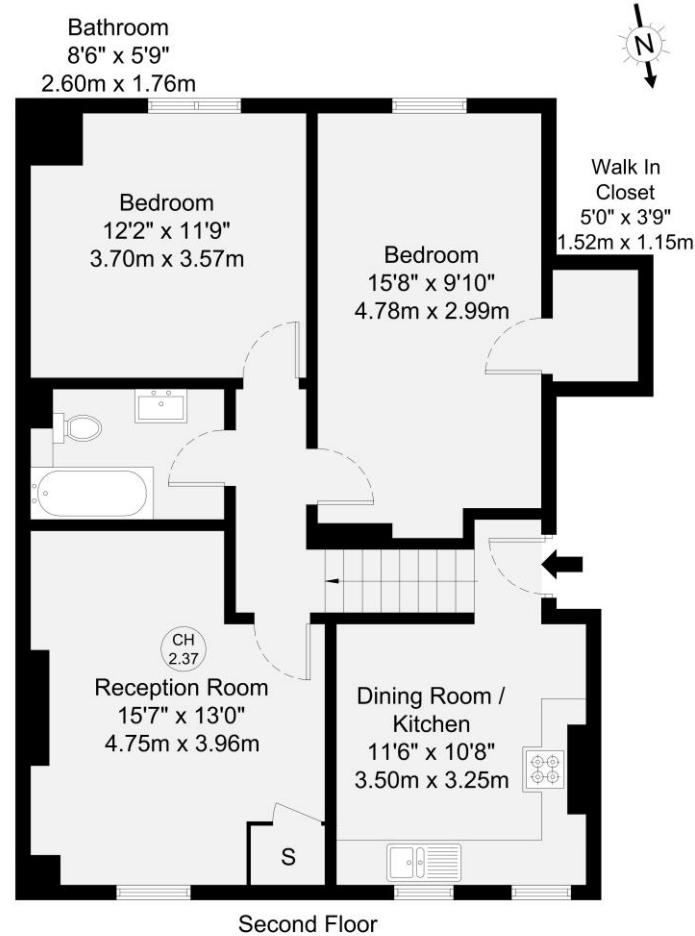
London

SW18 2QE

wandsworth@chestertons.co.uk

0208 104 7530

chestertons.co.uk



GROSS INTERNAL AREA (GIA)
The footprint of the property
74.9 sq m / 806 sq ft

TOTAL STORAGE SPACE
Storage and wardrobe total area
0.8 sq m / 8 sq ft

EXTERNAL FEATURES
Garden, Balcony, Terrace, Verandah etc.
0.0 sq m / 0.0 sq ft

RESTRICTED HEAD HEIGHT
Limited use area under 1.5m
0.0 sq m / 0.0 sq ft

Disclaimer : Floorplan measurements are approximate and are for illustrative purposes only. While we do not doubt the floorplan accuracy and completeness, you or your advisors should conduct a careful, independent investigation of the property in respect of monetary valuation.

Maison
VUE

