



UPPER RICHMOND ROAD WEST RICHMOND
£4,750 PER MONTH AVAILABLE 21/07/2026

Hamptons

THE HOME EXPERTS

{ THE PARTICULARS

Upper Richmond Road West
Richmond TW10

£4,750 Per Month
Part-furnished

 3 Bedrooms
 2 Bathrooms
 2 Receptions

Features

- Principal bedroom with en suite shower room, - Two further double bedrooms, - Family bathroom, - Guest WC, - Sitting room, - Dining room, - Kitchen, - Rear garden, - Off street parking, - Semi detached, - Part furnished, - Council Tax Band G

Council Tax

Council Tax Band G

Hamptons
252 Upper Richmond Road West
East Sheen, London, SW14 8AG
020 8618 4550
Eastsheenlettings@hamptons-int.com
www.hamptons.co.uk

{ BEAUTIFULLY FINISHED SEMI DETACHED FAMILY HOME.

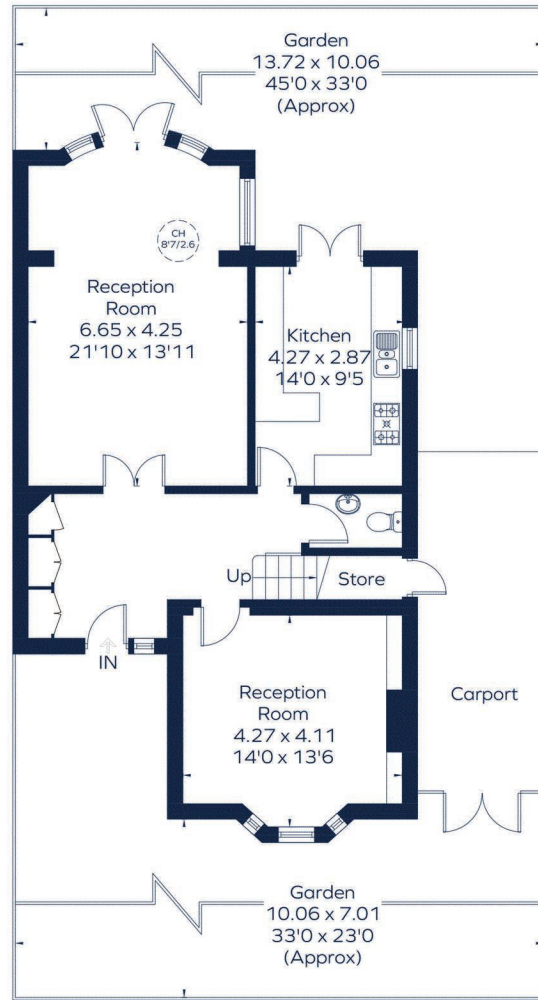
The Property

Immaculately presented semi detached family house in this convenient location for all the facilities of both Richmond and East Sheen. The house is semi detached and has a front and rear garden, off street parking and a garage storage area. The accommodation consists of a principal bedroom with en suite shower room, two further double bedrooms, family bathroom, guest WC, sitting room with doors to the garden, dining room and kitchen leading to the rear garden. The house benefits from high quality hard wooden flooring throughout the bedrooms and living areas. Offered partly furnished. Available at the beginning of May.

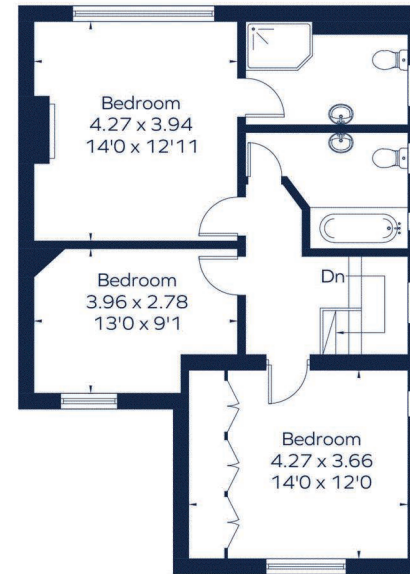


UPPER RICHMOND ROAD WEST

Approximate Gross Internal Area
 Ground floor = 816 sq. ft. (75.8 sq. m.)
 First floor = 708 sq. ft. (65.8 sq. m.)
 Total = 1524 sq. ft. (141.6 sq. m.)



Ground Floor



First Floor

Drawn for illustration and identification purposes only.
 ID 1287687

For Clarification

We wish to inform prospective tenants that we have prepared these particulars as a general guide and they have been confirmed as accurate by the landlord. We have not verified permissions, nor carried out a survey, tested the services, appliances and specific fittings. Room sizes are approximate and measurement figures rounded: they are taken between internal wall surfaces and therefore include cupboards/shelves, etc. Accordingly, they should not be relied upon for

carpets and furnishings. It should also be noted that all fixtures and fittings, carpeted, curtains/blinds, kitchen equipment and garden statuary, whether fitted or not, are deemed removable by the landlord unless specifically itemised with these particulars. Please enquire in office or on our website for details on holding deposit and tenancy deposit figures.

Energy Efficiency Rating		Current	Potential
100-90	A		
85-75	B		
70-60	C		
55-45	D		
40-30	E		
25-15	F		
10-5	G		
		59	81

England & Wales EU Directive 2002/91/EC

