

for sale

£284,000



Staddlestone Circle HEREFORD HR2 6SB

Located in Saxongate, not far from Hereford City Centre, this spacious four-bedroom home offers easy access to a wide range of amenities and is well presented throughout. With generously sized rooms, early viewing is strongly recommended to avoid disappointment.

Staddlestone Circle HEREFORD HR2 6SB

Entrance Porch

Double glazed door.

Entrance Hall

Radiator, storage cupboard, stairs leading to the first floor.

Cloakroom

Low flush W.C, wash hand basin, shower cubicle, partially tiled wall surround, panelled radiator, spot lights, and extractor fan.

Lounge

14' 9" x 13' 8" (4.50m x 4.17m)

Double glazed window to front elevation, double glazed French doors to Juliette balcony and radiator.

Kitchen

14' 8" x 10' 7" (4.47m x 3.23m)

Double glazed window to rear, sink, integrated oven and hob, integrated dish washer, fridge, freezer and radiator.

Utility Room

5' 10" x 8' 7" (1.78m x 2.62m)

Space for washing machine, tumble dryer, boiler and double glazed door to rear.

Bedroom One

12' 1" x 11' (3.68m x 3.35m)

Double glazed window to front, radiator, access to loft and walk in wardrobe.

En Suite

Shower, sink, WC and towel rail radiator.

Bedroom Two

12' 9" x 8' 6" (3.89m x 2.59m)

Double glazed window to rear, radiator and built in wardrobe.

Bedroom Three

12' 1" x 7' 10" (3.68m x 2.39m)

Double glazed window to front elevation and radiator.

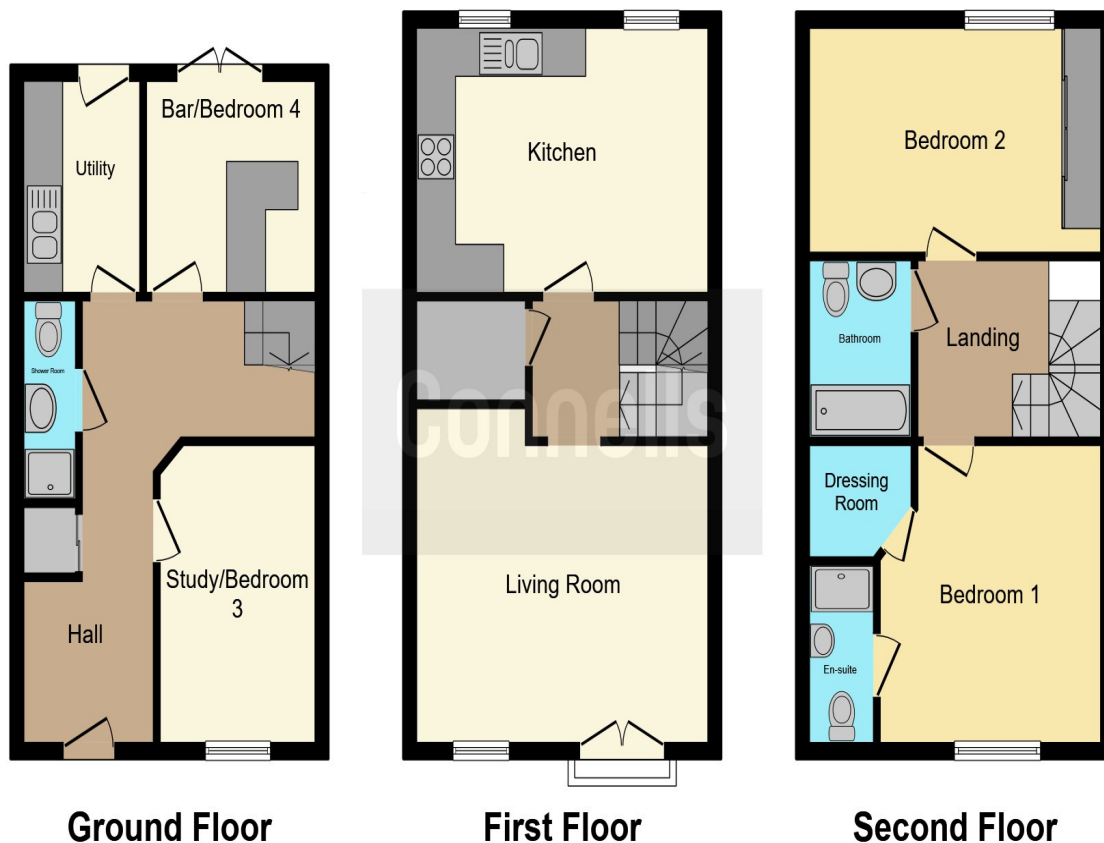
Bedroom Four

8' 7" x 8' 6" (2.62m x 2.59m)

Double glazed French doors to rear, built in bar and radiator.







This floor plan is for illustrative purposes only. It is not drawn to scale. Any measurements, floor areas (including any total floor area), openings and orientation are approximate. No details are guaranteed, they cannot be relied upon for any purpose and they do not form part of any agreement. No liability is taken for any error, omission or misstatement. A party must rely upon its own inspection(s). Powered by www.focalagent.com

To view this property please contact Connells on

T 01432 267 511
E hereford@connells.co.uk

23 King Street
 HEREFORD HR4 9BX

Property Ref: HER315833 - 0004

Tenure:Freehold EPC Rating: C

Council Tax Band: D

view this property online connells.co.uk/Property/HER315833



1. MONEY LAUNDERING REGULATIONS Intending purchasers will be asked to produce identification documentation at a later stage and we would ask for your co-operation in order that there will be no delay in agreeing the sale. 2. These particulars do not constitute part or all of an offer or contract. 3. The measurements indicated are supplied for guidance only and as such must be considered incorrect. Potential buyers are advised to recheck measurements before committing to any expense. 4. We have not tested any apparatus, equipment, fixtures, fittings or services and it is in the buyers interest to check the working condition of any appliances.

Connells Residential is registered in England and Wales under company number 1489613, Registered Office is Cumbria House, 16-20 Hockliffe Street, Leighton Buzzard, Bedfordshire, LU7 1GN. VAT Registration Number is 500 2481 05.

see all our properties at www.connells.co.uk | www.rightmove.co.uk | www.zoopla.co.uk