

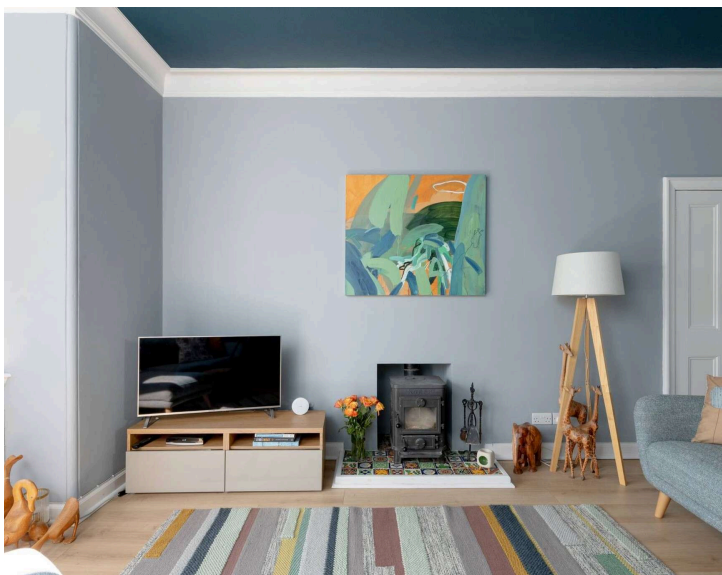
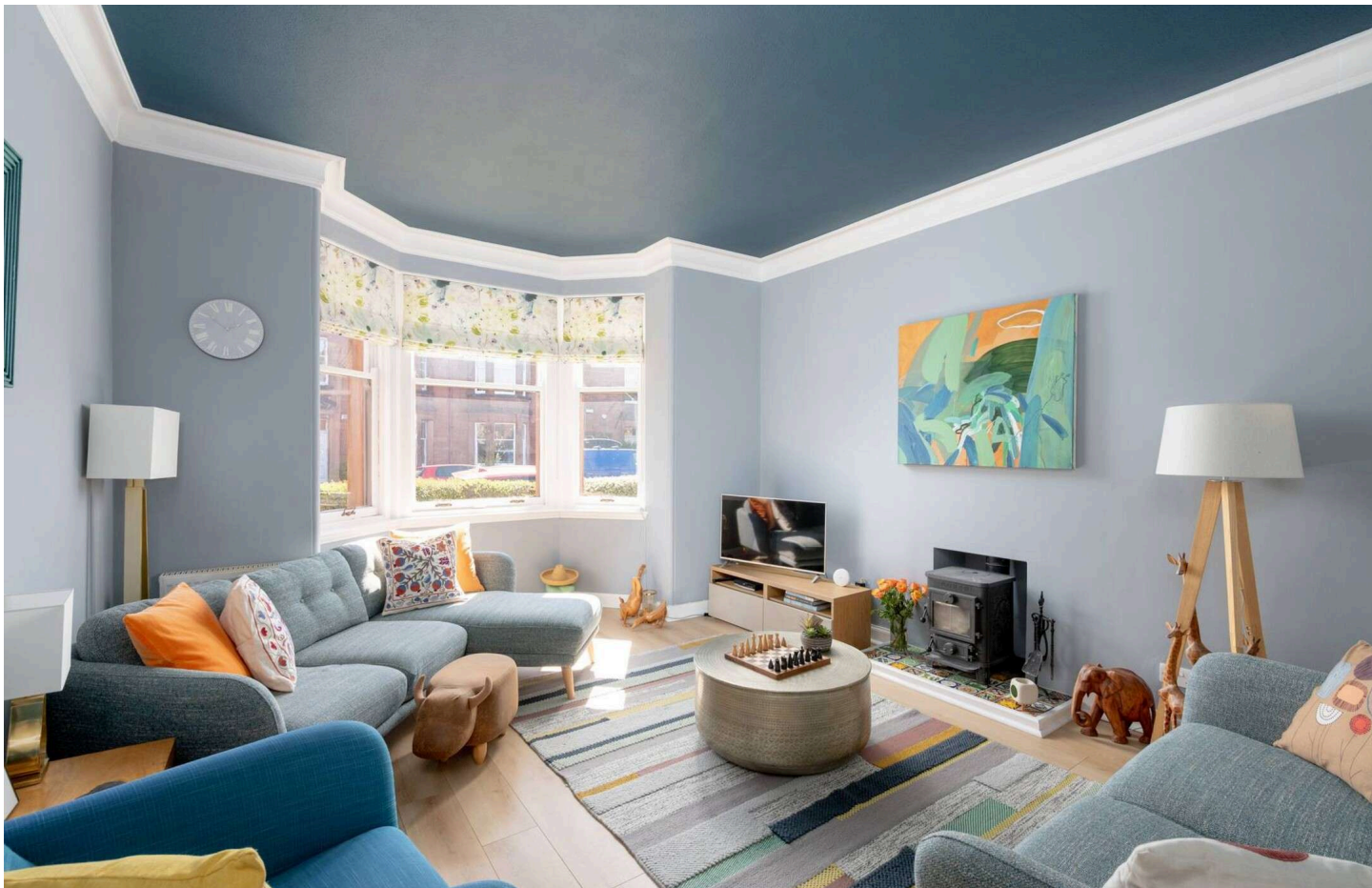


29 Denham Green Terrace

Trinity, Edinburgh, EH5 3PE



VMH ESTATE AGENTS



Impressive end terraced Trinity home offering expansive living over three levels

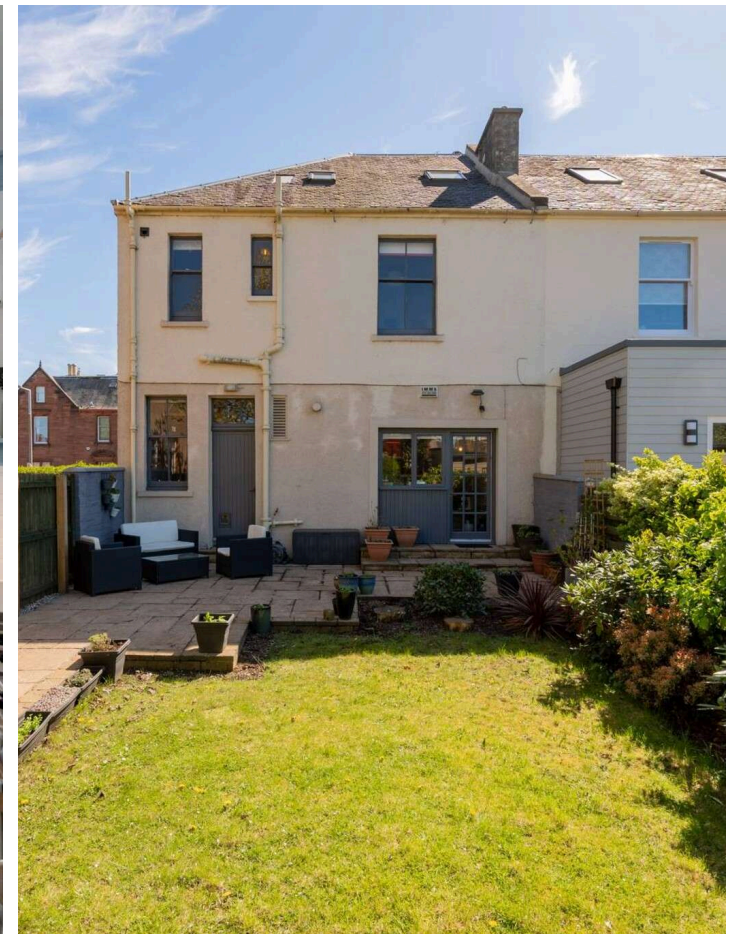
- Bay windowed sitting room
- Kitchen/dining room
- Utility room
- Principal bedroom with en-suite
- 5 further double bedrooms
- Family bathroom
- Separate WC
- Private gardens to the front & rear
- Garage
- Gas central heating

Offers Over:
£995,000



 Freehold

Further information can be found in the home report.



“

Combining generous living space, desirable features, and a prime residential location

”

About the Property

Set within the highly sought-after Trinity area of Edinburgh, this exceptional 6 bedroom end terraced home offers an outstanding blend of space, comfort, and character, perfectly suited to modern family living.

Arranged over three generous levels, the property boasts impressive proportions throughout, with well-balanced accommodation that provides both flexibility and functionality. The ground floor welcomes you with expansive living areas, including a bay windowed sitting room centred around a woodburning stove. The well-appointed bedrooms offer ample space for growing families, guests, or home working.

Externally, the home is equally appealing, featuring private gardens perfect for relaxation or social gatherings. A private garage further enhances the practicality of the property, offering convenient parking.

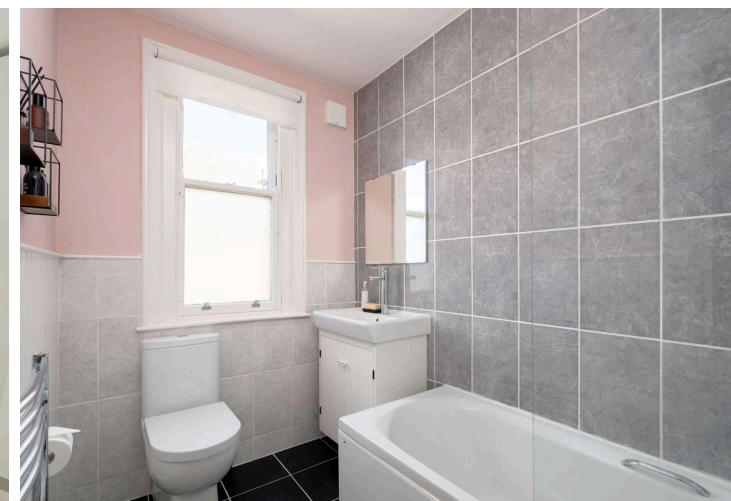


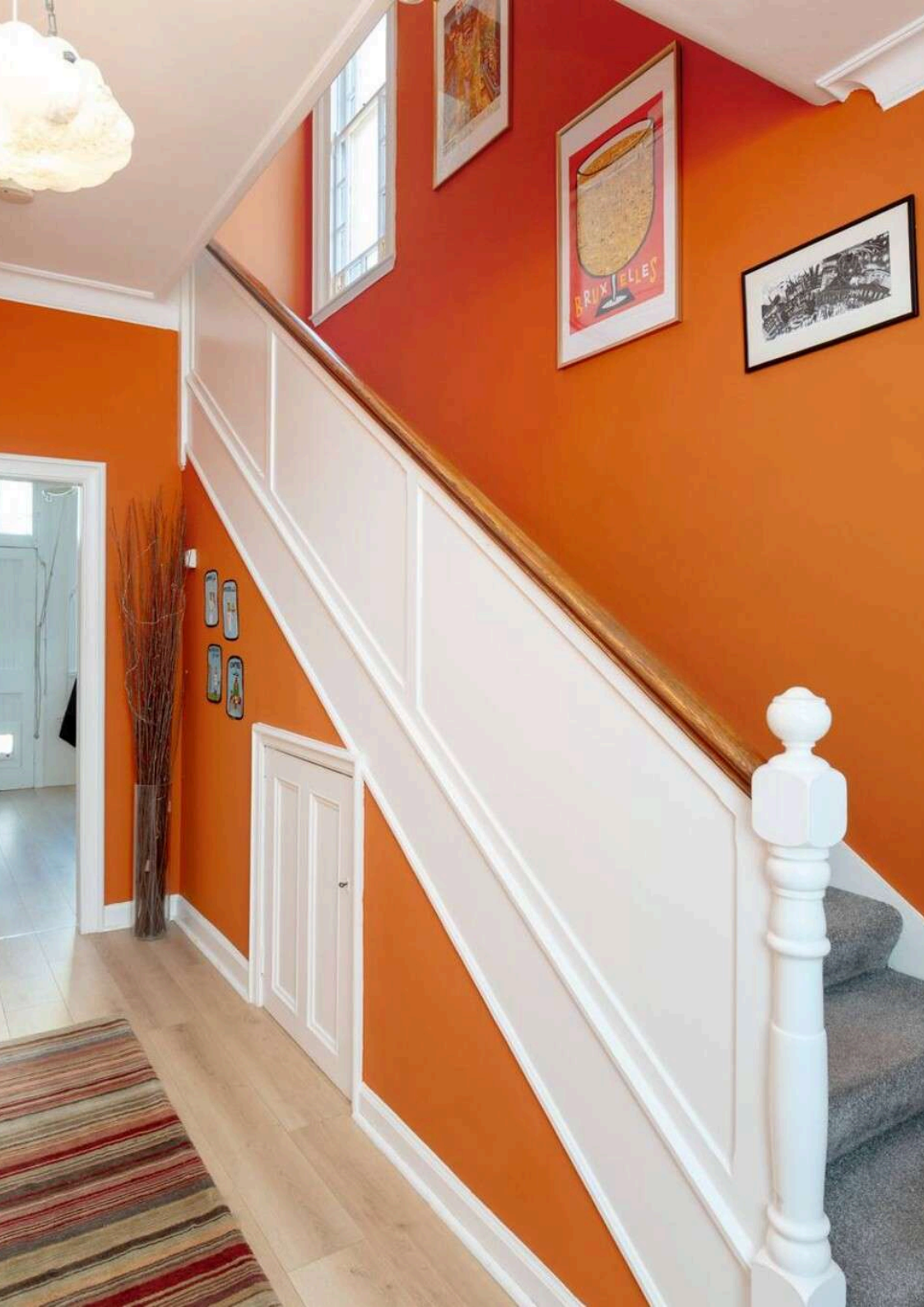


Combining generous living space, desirable features, and a prime residential location, this is a rare opportunity to acquire a substantial family home in one of Edinburgh's most popular neighbourhoods.

⊕ Extras

All fitted floor coverings, blinds, range cooker, 2 x fridge/freezer, dishwasher and washing machine and tumble dryer to be included in the sale price







📍 Location

The property lies in the affluent and established residential district of Trinity, approximately 2 miles from the city centre and close to the Firth of Forth.

This is a high amenity district with pleasant leafy streets and a fine local park with an active tennis and bowling club.

There is fantastic local shopping at Goldenacre and nearby supermarkets include Morrisons, Waitrose, Sainsbury's and Asda.

The Royal Botanic Gardens and Inverleith Park are within easy reach. Neighbouring Leith and Granton Harbour offer excellent shopping and dining facilities, and the Ocean Terminal is home to shops, eateries, and Vue cinema.

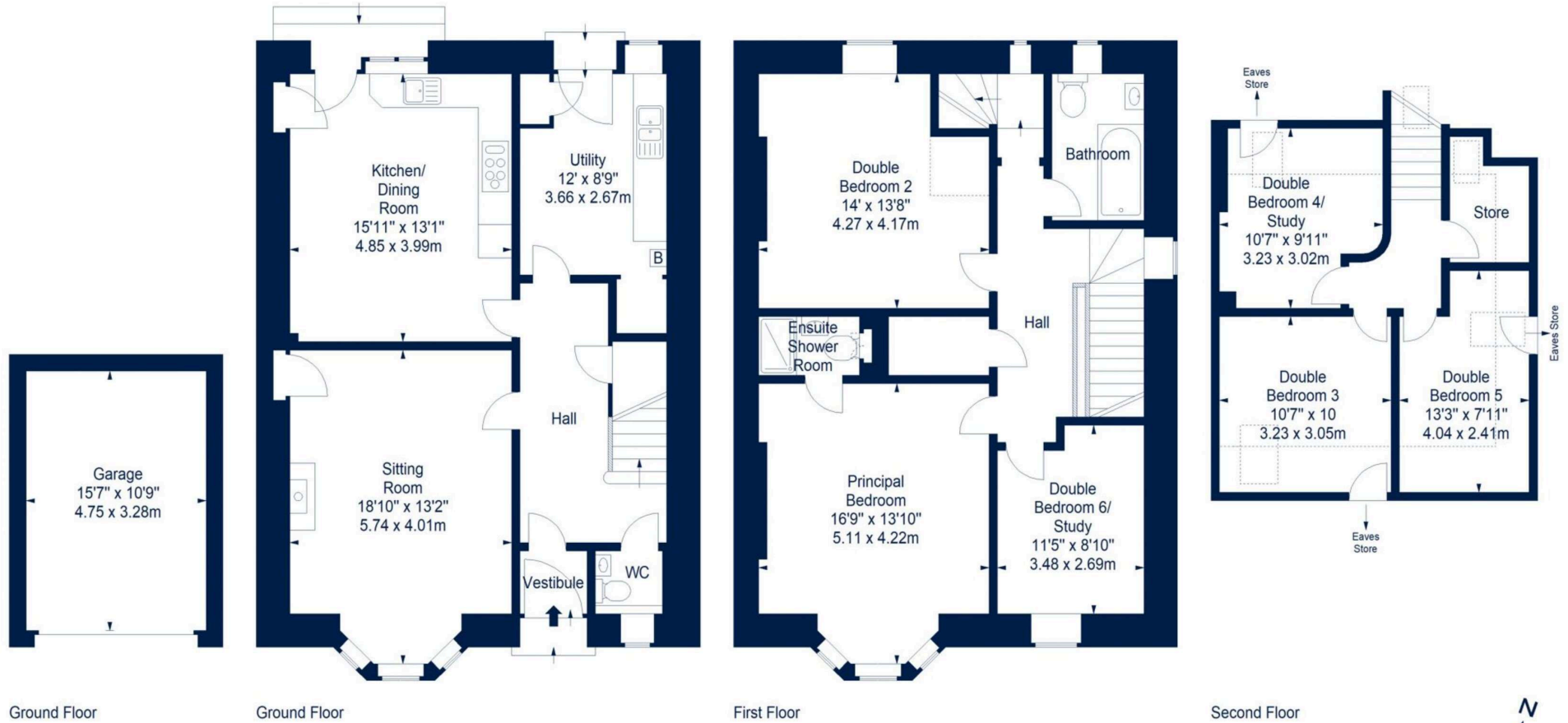
Excellent schooling is represented in the state and private sector.





Floor Plan

29 Denham Green Terrace, Edinburgh, EH5 3PE



Ground Floor

Ground Floor

First Floor

Second Floor



House - Approx. Gross Internal Area - 1907 Sq Ft - 177.16 Sq M

Garage - Approx. Gross Internal Area - 167 Sq Ft - 15.51 Sq M

For identification only. Not to scale. © SquareFoot 2026





VMH ESTATE AGENTS



VMH SOLICITORS

More is our middle name.

Registered Office: 8 Sibbald Walk, Edinburgh, EH8 8FT

 **0131 622 2626**

 **property@vmh.co.uk**

 **vmh.co.uk**

 **DX: 552210, Edinburgh 68**

The dimensions provided are for illustration purposes only; detailed measurements should be taken personally. No documentation will be exhibited in respect of the compliance or otherwise of replacement windows. Although every attempt has been taken to ensure accuracy, the details within the brochure are not guaranteed or warranted and will not form part of any future contract to buy.