



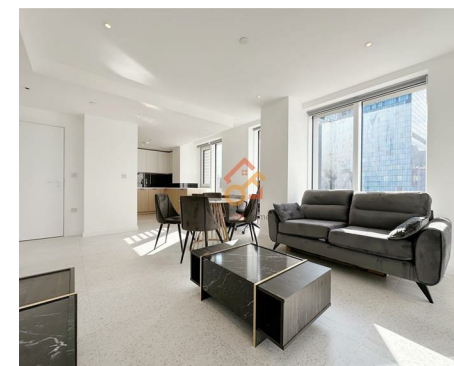
Let **UK** Home

**2 Bedrooms**

**Flat**

**Located in London**

**£3,600 Per Month**



[info@letukhome.co.uk](mailto:info@letukhome.co.uk)

<https://www.letukhome.co.uk/>

01795 358 886



# 7 Cendal Crescent London

E1 2FT



Let UK Home are excited to offer this spectacular two bedroom apartment in the heart of Silk District in Whitechapel.

This property comprises a large bright open plan kitchen and living room leading to a large private balcony with great views, two double bedrooms(master with wardrobes and en-suite), a large family sized bathroom and ample storage. A virtual viewing is provided.

The residents of this apartment will enjoy concierge service, gym, spinning room, screening room and terrace, flexible and designed work and study space, etc.

The apartment is just one street away from Whitechapel subway station. At the same time, Whitechapel station is also a transportation hub for the District and Hammersmith & City subway lines. From here, you can quickly reach the City of London, Canary Wharf and other places.

Within walking distance of the apartment, there is a large Sainsbury's shopping center, Asda department store, White Chapel Post Office and the famous Barclays Bank.

# 7 Cendal Crescent London

£3,600 Per Month



- 8th Floor
- The Gym
- Cinema & Game Room
- EPC Rating: B
- Concierge Service
- 24h Security
- Virtual Viewing Available





**Total floor area**

**77 square metres**



Let **UK** Home

3F 2 Eastbourne Terrace

Paddington

London

W2 6LG

01795 358 886

info@letukhome.co.uk

**Council Tax Band: F**

**Local Authority:**

Agents Note: Whilst every care has been taken to prepare these particulars, they are for guidance purposes only. All measurements are approximate and are for general guidance purposes only and whilst every care has been taken to ensure their accuracy, they should not be relied upon and potential buyers/tenants are advised to recheck the measurements.

Energy Efficiency Rating		Current	Potential
Very energy efficient - lower running costs			
(92 plus) <b>A</b>			
(81-91) <b>B</b>		85	85
(69-80) <b>C</b>			
(55-68) <b>D</b>			
(39-54) <b>E</b>			
(21-38) <b>F</b>			
(1-20) <b>G</b>			
Not energy efficient - higher running costs			
<b>England &amp; Wales</b>	EU Directive 2002/91/EC		

<https://www.letukhome.co.uk/>