



## Mentmore Terrace, E8

£4,500 Per week

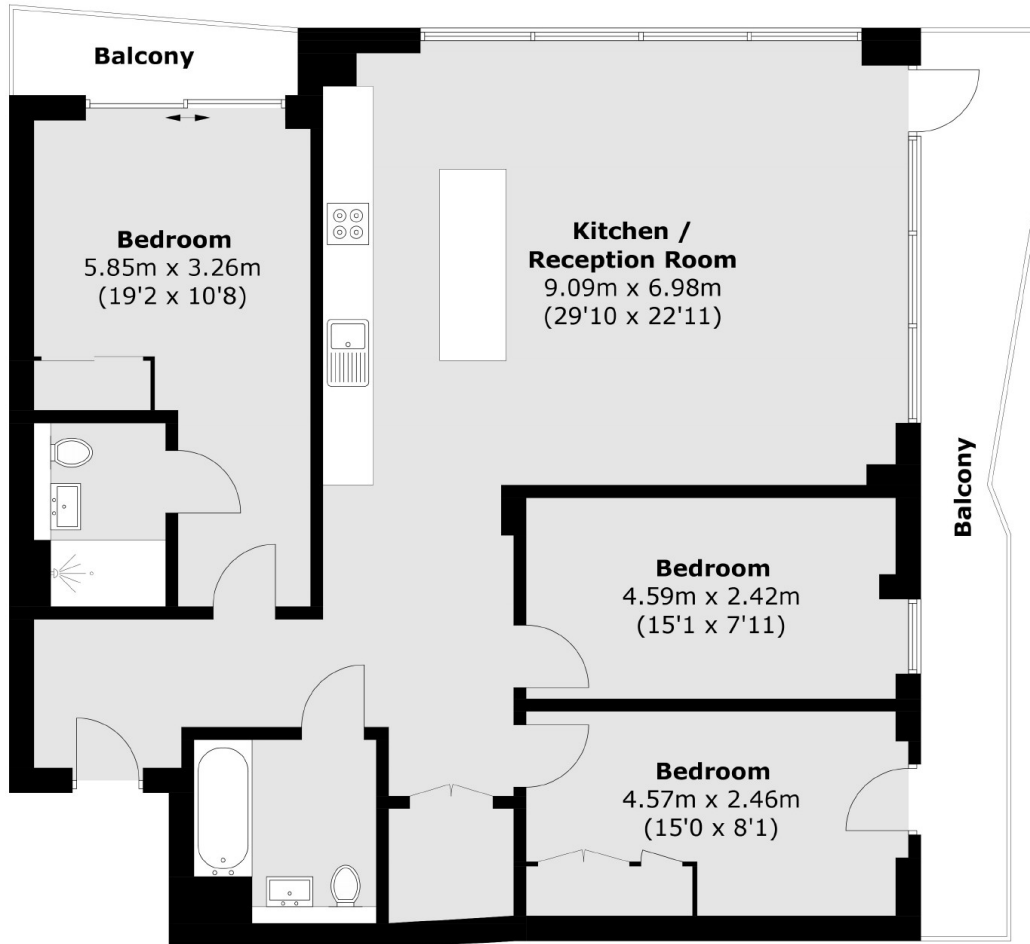
A beautiful brand new three double bedroom apartment in Fieldsview Building. This spacious third floor property comes with three double bedrooms, two bathrooms, open plan kitchen with floor to ceiling windows overlooking the City & Canary Wharf.

Amazing location with easy reach of London Fields and Broadway markets for all local shops, bars and restaurants.

### Features

- Three Double Bedrooms
- Two Bathroom
- Two Balconies
- Open Plan
- Amazing Views
- Concierge, Gym & Cinema

# Mentmore Terrace, London, E8



Total area (approx.): 103.6 sq. m (1,115.1 sq. ft)  
Balcony: 15.1 sq. m (162.5 sq. ft)