



PROPERTY EXPERTS
SINCE 1989



LEABANK SQUARE, E9

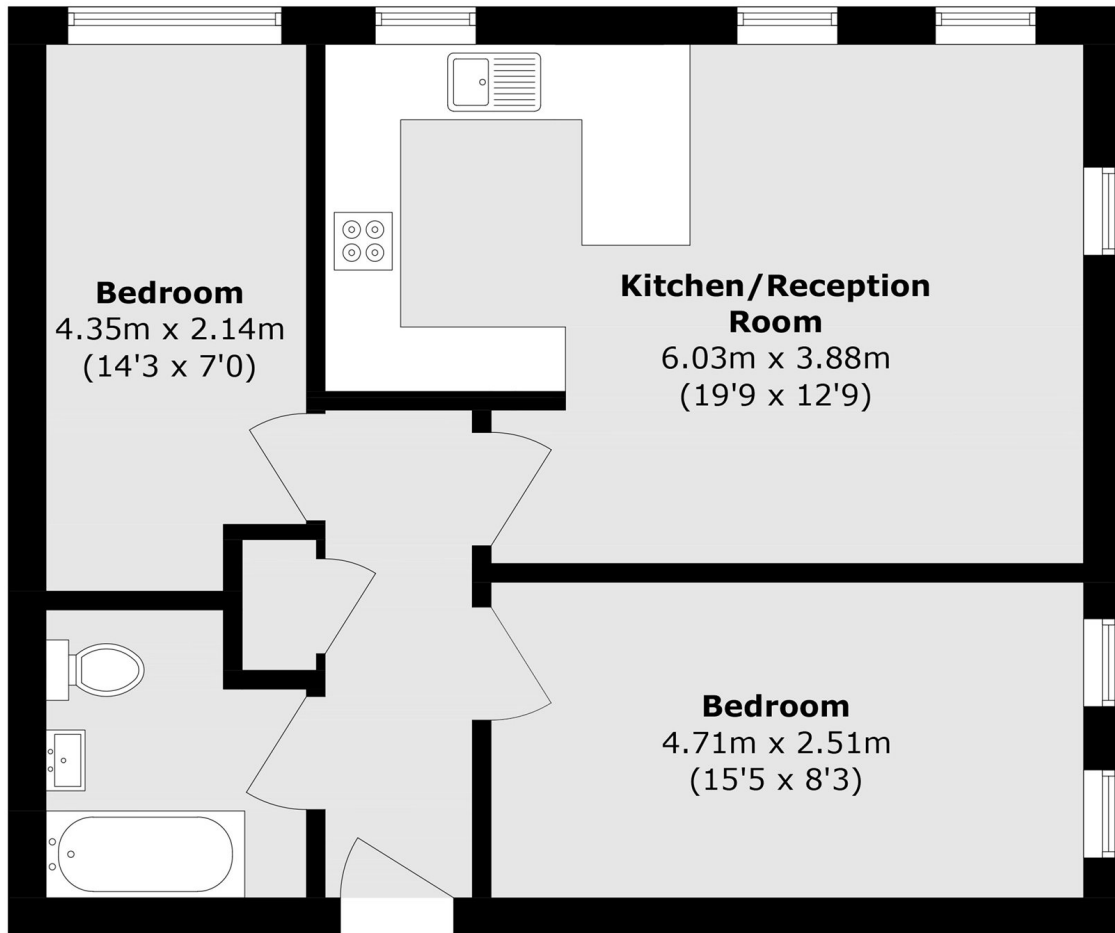
£420,000

A modern top floor two bedroom apartment with an open plan living area, two double bedrooms, loft access, ample storage and access to communal gardens. There is also an allocated parking bay.

- Top Floor
- Allocated Parking
- Two Double Bedrooms
- Loft Access
- Ample Storage
- Communal Gardens



PROPERTY EXPERTS
SINCE 1989



Total area (approx.): 56.0 sq. m (602.7 sq. ft)

SOVEREIGN HOUSE

213 Victoria Park Road,
London, E9 7HD
020 8985 5800

Energy Rating: D We aim to make our particulars both accurate and reliable. However they are not guaranteed; nor do they form part of an offer or contract. If you require clarification on any points then please contact us, especially if you're traveling some distance to view. Please note that appliances and heating systems have not been tested and therefore no warranties can be given as to their good working order.